


PLAYBILL®

 WALNUT STREET THEATRE
PHILADELPHIA, PENNSYLVANIA



ANDREW LLOYD WEBBER'S
Aspects of Love

WWW.PLAYBILL.COM



AMERICA'S OLDEST THEATRE – PHILADELPHIA'S MOST POPULAR THEATRE COMPANY

WALNUT STREET THEATRE

825 WALNUT STREET • PHILADELPHIA PA 19107

Dear Theatregoer,

Welcome to the Walnut Street Theatre! This fall we proudly celebrate our landmark 203rd season of live entertainment and our 29th anniversary season as a not-for-profit producing theatre company. As America's Oldest Theatre, we not only have a rich history, but a magnificent future in our 2011–2012 season. We owe our success to the continued support of loyal theatregoers like you. With more than 56,000 subscribers annually, you've made the Walnut the most popular theatre in Philadelphia and the most subscribed theatre company in the world!

We're ready for a spectacular season of mystery and romance featuring three Broadway musicals and two award-winning plays, and hope you are too. The production you are about to see, *Aspects of Love*, is the fifth Andrew Lloyd Webber show I have had the pleasure to produce. You may remember our productions of *Evita*, *Joseph and the Amazing Technicolor Dreamcoat*, *Jesus Christ Superstar* and *Cats*. The score Webber created for *Aspects* I believe to be the composer's best work and I think you'll agree. Based on David Garnett's novella, we share with you a love story where six people and three generations come together to discover that "Love Changes Everything."



Photo: Mark Garvin

Just in time for the holidays, we'll have your family whistling a happy tune with our all-new production of Rodgers & Hammerstein's *The King and I*. You may recognize our King as the Engineer from last season's *Miss Saigon*! Next is Agatha Christie's classic thriller, *The Mousetrap*, which will celebrate its 60th anniversary while on our stage. The season continues with the Tony Award-winning comedy about kids and grown-ups, *God of Carnage* and the musical sensation, *Buddy – The Buddy Holly Story*.

I'd also like to invite you to take a trip upstairs to our cozy Independence Studio on 3. Just two floors above where you are now, we have a remarkable season for this intimate space. First we'll celebrate the friendship that became part of show business history with *Noël and Gertie*. Next, join us for David Auburn's Pulitzer Prize-winning *Proof* before it sets out on a national tour. We'll then produce a world premiere about the life of Philadelphia's own saucy star, Ethel Waters, with *Ethel!*. The season ends with the suspense-filled drama *Doubt – A Parable* and Rodgers and Hammerstein's *A Grand Night for Singing*.

Thank you for joining us for *Aspects of Love*. I hope you will join us for the rest of our 203rd season!

Sincerely,

Bernard Havard
Producing Artistic Director

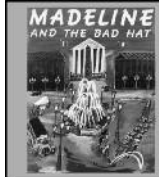
WST THEATRE FOR KIDS AND THEIR "GROWN UP" FRIENDS

Every year, tens of thousands of kids fill the Walnut with laughter, applause and excitement. We want you to join us next season as we celebrate great books and fun reading. Children love seeing entertaining musical shows that deliver enduring, real-life lessons in a welcoming, kid-friendly environment. Make your family part of our family.

The WST for Kids 2011-2012 season will feature four great musicals based on your kids' favorite books! *Madeline and the Bad Hat* (Saturday, September 24) is a super-funny original musical based on Ludwig Bemelmans' classic *Madeline* series. Kids love *Madeline* and *Madeline* loves everyone, except her new neighbor, the rude and conceited Pepito! In *Madeline and the Bad Hat*, enemies become friends and first impressions aren't everything.

Henry and Mudge (Saturday, February 4) is a heartwarming musical about a boy and his canine best friend. Based on the best-selling book series by Cynthia Rylant, Henry learns that moving from the city to a new house in the country can be tough. Luckily, Henry has Mudge – a big, slobbery, canine buddy to share adventures with him. But, when Mudge goes missing, Henry must find the courage to find his best friend.

Miss Nelson is Missing (Saturday, March 31) is a WST for Kids original production based on Harry Allard's classic children's mystery story. Miss Nelson is the nicest teacher ever...or is she? The kids in Room 207 take advantage of her good nature until one day she disappears! When faced with the mysterious substitute, Viola Swamp, they realize just how much they miss Miss Nelson! Can they get her back?



Closing the WST for Kids 2011-2012 Season is *Skippyjon Jones* (Saturday, June 2), a little kitten with big ears and even bigger dreams! He longs to be someone different, so *Skippyjon* transforms himself into *Skipitto Friskito*, the greatest canine sword fighter in old Mexico! But when *Skippyjon* is challenged by a bullying bee, will he be a 'fraidy cat or the top dog? In Judy Schachner's charming musical, kids are encouraged to follow their dreams.

The WST original, annual production of Charles Dickens' *A Christmas Carol* returns this holiday season! Don't miss out when old Scrooge conquers his miserly, hum-bugging ways!

Tickets for WST for Kids productions are on sale now and sell quickly! Purchase your tickets today. Call 215-574-3550 or visit WalnutStreetTheatre.org.

COMING ATTRACTIONS: AT THIS THEATRE !

Mainstage: Also coming this season: Rodgers and Hammerstein's *The King and I*, November 8–January 8, 2012. *The Mousetrap*, January 17–March 4, 2012. *God of Carnage*, March 13–April 29, 2012. *Buddy – The Buddy Holly Story*, May 15–July 15, 2012. **WST for Kids:** *Madeline and the Bad Hat* - September 24, 2011. *A Christmas Carol* – December 3–20, 2011. *Henry and Mudge* – February 4, 2012. *Miss Nelson is Missing* – March 28–April 13, 2012. *Skippyjon Jones* – June 2, 2012. For Mainstage subscriptions, call 215-574-3550, ext. 6 (7 days a week, 10am – 10pm).

Independence Studio on 3: *Noël and Gertie*, November 22–December 31, 2011. *Proof*,

January 17–February 5, 2012. *Ethel!*, February 21–March 11, 2012. *Doubt – A Parable*, March 27–April 15, 2012. *A Grand Night for Singing*, May 1–June 24, 2012. Now seating subscribers. Call 215-574-3550, ext. 6. (7 days a week, 10am–10pm).

Walnut Street Theatre School: For more information on the Fall 2011 semester beginning September 26th, call 215-574-3550, ext. 510.

For information on any of the above items, or to purchase tickets, call the Walnut at 215-574-3550 or visit our website at WalnutStreetTheatre.org. Tickets for Walnut Street Theatre productions can also be purchased at Ticketmaster or by calling 800-982-2787.



FOUNDED 1809

AMERICA'S OLDEST THEATRE – PHILADELPHIA'S MOST POPULAR THEATRE COMPANY

WALNUT STREET THEATRE

825 WALNUT STREET • PHILADELPHIA PA 19107

BERNARD HAVARD

Producing Artistic Director

September 6 – October 23, 2011

ASPECTS OF LOVE

Music by **ANDREW LLOYD WEBBER**

Lyrics by **DON BLACK & CHARLES HART**

Based on the novel by **DAVID GARNETT**

Scenic Design

JOHN FARRELL

Lighting Design

JACK JACOBS

Costume Design

COLLEEN GRADY

Sound Design

DAVID TEMBY

Production Manager

JOEL MARKUS

Stage Managers

DEBI MARCUCCI
LORI AGHAZARIAN

Choreography by

MICHELLE GAUDETTE

Musical Direction by

DOUGLASS G. LUTZ

Directed by

BRUCE LUMPKIN

Sponsored by



MARK D. SYLVESTER

Managing Director

Director of

Education

THOMAS P. QUINN

Director of

Institutional Advancement

REBEKAH SASSI

Director of Marketing

and Public Relations

RALPH WEEKS

CAST LIST

(in order of appearance)

Alex Dillingham	CHARLES HAGERTY*
Rose Vibert	JENNIFER HOPE WILLS*
Marcel Richard	LAURENT GIROUX*
George Dillingham	PAUL SCHOEFFLER*
Giulietta Trapani.....	DANIELLE G. HERBERT*
Jerome	PETER SCHMITZ*
Elizabeth.....	DENISE WHELAN*
Hugo LeMeunier	DENIS LAMBERT*
Young Jenny.....	ARIN EDELSTEIN‡; CLAIRE NORDEN†
Jenny Dillingham.....	JENNA BROOKE SCANNELLI

ENSEMBLE

MICHAEL BRIAN DUNN*, DANIEL LYNN EVANS*, LIZ FILIOS*,
MARISSA K. HINES*, DENIS LAMBERT*, SHAUN PARRY*, CHAD PARSONS,
REBECCA ROBBINS*, KERRI ROSE*, PETER SCHMITZ*, DENISE WHELAN*,
DANA WINKLE*

UNDERSTUDIES

MICHAEL BRIAN DUNN* (George Dillingham), DENIS LAMBERT* (Alex Dillingham),
HARRISON POST (Ensemble), KATIE ROMANO (Ensemble),
CONNOR SCHWANTES (Ensemble), MICHELLE VEZILJ (Ensemble),
DANA WINKLE* (Rose Vibert)

EXTRAS

HARRISON POST, KATIE ROMANO, CONNOR SCHWANTES, MICHELLE VEZILJ

* Denotes membership in Actors' Equity Association, the professional union of Actors and Stage Managers in the United States.

† Performs Tuesday, Wednesday and Thursday Evenings; Thursday Matinees

‡ Performs Friday, Saturday and Sunday Evenings; Saturday and Sunday Matinees

Aspects of Love is presented through special arrangement with R & H Theatricals,
www.rnhtheatricals.com.

ORCHESTRA

Music/Vocal Director/Conductor/Keyboards I: DOUGLASS G. LUTZ

Associate Conductor/Keyboard II: JOHN DANIELS

Concertmaster/Violin I: GREGORY TEPERMAN

Violin 2: IGOR SZWEC

Cello: ANTHONY PIROLLO

Reed I (Flute, Alto Flute, Piccolo): FRANK MAZZEO

Reed II (Oboe, English Horn, Clarinet): ROBERT QUAILE

Reed III (Clarinet, Bass Clarinet and Alto Saxophone): JOHN WELTE

French Horn: LYNDSIE WILSON

Contrabass: FRED WEISS

Percussion: JOE NERO, SR.



The use of any recording device, either audio or video, and the taking of photographs, either with or without flash, is strictly prohibited.

MUSICAL SYNOPSIS

ACT I

Prologue: France, 1964

Scene 1 The Garden
Love Changes Everything Alex

France, 1967

Scene 2 A Small Theatre in Montpellier
Scene 3 A Café in Montpellier
Parlez-Vous Français? Rose, Alex, Ensemble

Scene 4 In a Train Compartment
Seeing is Believing Rose, Alex

Scene 5 The Terrace at Pau
Scene 6 A Sculpture Exhibition in Paris
A Memory of A Happy Moment George, Giulietta

Scene 7 The Terrace at Pau
Scene 8 In Many Rooms in the House at Pau

Scene 9 The Terrace at Pauthat Evening
Scene 10 The Same – Later that Evening

Scene 11 Pau Bedroom
Chanson d'Enfance Rose, Alex

Scene 12 Outside the House at Pau
Scene 13 The Railroad Station

Two Years Later

Scene 14 A Fairground in Paris
Everybody Loves a Hero Ensemble

Scene 15 George's Flat in Paris
She'd Be Far Better Off With You Alex, George

Scene 16 The Same – the Following Morning
Scene 17 Giulietta's Studio in Venice
Stop. Wait. Please Giulietta, George

Scene 18 The Same – Two Weeks Later
Scene 19 The Same

Scene 20 A Registry Office
Scene 21 A Military Camp in Malaya

ACT II

Thirteen Years Later

Scene 1 Backstage in a Grand Theatre in Paris
Leading Lady Marcel, Rose

Scene 2 Rose's Dressing Room
Scene 3 The Terrace at Pau
Other Pleasures George

Scene 4 A Café in Venice
There Is More To Love Giulietta

Scene 5 The Terrace at Pau
Mermaid Song Jenny, Alex

Scene 6 The Countryside around the House

Two Years Later

Scene 7 The Terrace at Pau – Late Afternoon
Scene 8 The Same – Early Evening
The First Man You Remember George, Jenny

Scene 9 The Same – Two Hours Later
Scene 10 Inside the House at Pau

Scene 11 The Countryside around the House
Scene 12 A Circus in Paris
Journey Of A Lifetime Ensemble

Scene 13 Outside the Circus
Falling George, Rose, Alex, Jenny

Scene 14 Jenny's Bedroom in Paris
Scene 15 The Vineyards at Pau
Hand Me The Wine And The Dice Giulietta, Ensemble

Scene 16 The Same – Later that Evening
Scene 17 The Garden at Pau
Anything But Lonely Rose

Love Changes Everything Alex, Giulietta



**Michael Brian
Dunn**



Arin Edelstein



**Daniel Lynn
Evans**



Liz Filios



Laurent Giroux



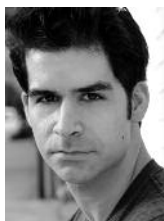
Charles Hagerty



**Danielle G.
Herbert**



Marissa K. Hines



Denis Lambert



Claire Norden



Shaun Parry



Chad Parsons



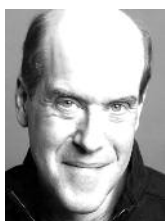
Rebecca Robbins



Kerri Rose



**Jenna Brooke
Scannelli**



Peter Schmitz



Paul Schoeffler



Denise Whelan



**Jennifer Hope
Wills**



Dana Winkle

WHO'S WHO IN THE CAST

MICHAEL BRIAN DUNN (Ensemble/George Dillingham u/s) WST: *Cats, La Vie En Bleu, Rags*. Broadway: *The Life, Cats, Guys and Dolls, Sweeney Todd, Big River, Baby*. National Tours: *Amadeus, H.M.S. Pinafore*. Off-Broadway: *Secrets Every Traveler, Perfect Crime, Death of Von Richthoffen, Lenny and the Heartbreakers, Kennedy's Children, Gifts of the Magi*. Film/TV: *Law & Order, Julie & Julia* (Ivan Cousins).

ARIN EDELSTEIN (Young Jenny) loves WST: *Oliver!* and *Fiddler* (Shprintze). Additional credits: *25th...Spelling Bee* (Olive Ostrovsky), *Music Man* (Amaryllis). Cheltenham honor student. Love/thanks to family, teachers and friends!

DANIEL LYNN EVANS (Ensemble) Excited to be working here at Walnut Street Theatre! Regional: Disney's *Beauty and the Beast, Cats* (Mistoffelees). Film: *Friends With Benefits*. Also a proud Debbie Gibson back-up dancer, flying trapeze catcher, burlesque ecdysiast and *So You Think You Can Dance* reject. Love and thanks to my friends, family and DDO.

LIZ FILIOS (Ensemble) Walnut debut! Regional credits: *Candide* (Cunégonde), *Three-penny Opera* (Lucy), *Sunday in the Park With George* (Celeste #1) Arden Theatre; *Eurydice* (Mezzo) Wilma Theatre; *Joseph...* (Narrator) Devon Theatre. Other credits: *The Sunny Side Up Show* (Host) PBS Kids Sprout. Thanks to Bruce, Michelle, Bernard, and my beautiful family!

LAURENT GIROUX (Marcel Richard) is thrilled to be back at the Walnut. Other WST productions: *La Vie En Bleu, Beauty and the Beast* and most recently *Curtains*. Broadway credits include: *Pippin, Chicago, Dancin'* and *The Mystery of Edwin Drood*. National Tours: *The Light in the Piazza, Annie* and *Jesus Christ Superstar A.D. Tour*. Visit: laurentgiroux.com.

CHARLES HAGERTY (Alex Dillingham) WST: *Miss Saigon*. Tours: *Wicked, Chicago* and National Tour; *Les Misérables; Jesus Christ Superstar*, Europe. Off-Broadway: *The Fantasticks*. Regional: Signature; North Shore; New Theatre. London: *My Beautiful Laundrette*.

DANIELLE G. HERBERT (Giulietta Trapani) A two-time Barrymore nominee, Danielle is thrilled to make her WST principal role debut on the Mainstage! Last seen in *My Way* at the Walnut's Independence Studio on 3; also, former background vocalist to R&B singer, Jill Scott. Many thanks to Bruce, Michelle, and

Bernard for this amazing opportunity! Danielleherbertonline.com

MARISSA K. HINES (Ensemble) is thrilled for her Walnut debut! Favorite credits: *Great American Trailer Park Musical* (Lin), *Rent* (Joanne) - 11th Hour; *Jesus Christ Superstar* (Mary Magdeline), *The Producers* (Shirley) - SSMT; *Gypsy* (Mazeppa) - Old Opera House. Hines also performed at The Kennedy Center and Carnegie Hall. For my family and friends for their undying support!

DENIS LAMBERT (Hugo LeMeunier/Ensemble/ Alex Dillingham u/s) Broadway: *A Chorus Line*. National Tours: *White Christmas* (Phil Davis), *A Chorus Line, The Producers*. NY: Encores!, *Yank!*, *Zorba, Dying City* (Craig/Peter), *Getting Tall* (solo show). Regional: *Picasso at the Lapin Agile* (Visitor, Syracuse Stage), *Annie* (Rooster, Wichita), *Biloxi Blues* (Wykowski, Forestburgh), *Carnival* (Kennedy Center), *Hello, Dolly!* (Paper Mill). denislambertonline.com

CLAIRE NORDEN (Young Jenny) is proud to be back at WST, *Carousel* (Snow Child). Other favorites: National Tour – *Gypsy* (Baby June); Regional – *Annie* (Annie). Love to family and friends.

SHAUN PARRY (Ensemble/ Dance Captain) Broadway/B'way Tours: *Phantom of the Opera, Cats, Aida, A Christmas Carol*. Off-Broadway/NYC: *Beowulf, The First Emperor, Songs for a New World, A Few Good Men*. Other: *Evita, All Shook Up, WSS, Swing!, Fosse*, New York Theatre Ballet, Martha Graham Dance, Ballroom National Championships (U.S. 10-Dance), MTV Made Coach. Shaun is the President/Founder of Promethean Spark International, a member of AEA and loves cheesecake. Proverbs 3:5-6

CHAD PARSONS (Ensemble) is grateful to return to WST after *Fiddler* (Yussel/Bottle Dance). Favorite credits include: Singer aboard NCL, *Joseph* (Simon), *The Wizard of Oz* (Tinman), *Rent* (Steve), *Altar Boyz* (Abraham) and *Forum* (Hysterium). WCU graduate. Much love to his friends and family for continuous love and support. Special thanks to Bruce and Michelle.

REBECCA ROBBINS (Ensemble) is grateful to be back at WST! Broadway: *A Tale of Two Cities*. Off-Broadway: *Fanny, Music in the Air, New Moon, Pajama Game* (City Center

WHO'S WHO IN THE CAST

Encores!), *The Music Teacher*. WST favorites: *The Musical of Musicals*, *Cats*, *Beauty and the Beast*, *La Vie En Bleu*. Love to MFK. In memory of my sister Diana. rebeccarobbins.com

KERRI ROSE (Ensemble) is so excited to return for her seventh WST show! Previous productions include *42nd Street*, *Hairspray*, *The Producers*, *Dirty Rotten Scoundrels*, *Curtains* and *White Christmas* (Rhoda). She is a graduate of the University of the Arts of Philadelphia with a BFA in Musical Theatre. Love and thanks to family and friends.

JENNA BROOKE SCANNELLI (Jenny Dillingham) 15 years old and has worked in film, television and theatre. She appeared on *30 Rock*, *One Life to Live* and was a halftime soloist for NYC Knicks. Off-Broadway credits include *Joseph and the Dreamcoat* and *Secret Garden*. Thanks to mom, dad and Kryssa for all your support! Thanks WST!

PETER SCHMITZ (Ensemble) loves working at the Walnut Street Theatre (*Amadeus*, *Curtains*, *Oliver!*, *Hairspray*, *Les Misérables*, *State Fair*, *Peter Pan*, *Carousel*, *Windy City*). Couldn't be happier being here with all of you! Proud member of Actor's Equity.

PAUL SCHOEFFLER (George Dillingham) Thrilled to be back at WST (*Dirty Rotten Scoundrels*, *Man of La Mancha*, *Peter Pan*, *Les Misérables*). Broadway: *Rock of Ages* (Hertz), *Sweet Charity* (Vittorio Vidal), *Peter Pan* (Hook) (filmed for A&E), *Beauty and the Beast* (Lumiere), *Cyrano* (Le Bret), *Nine*, *Victor/Victoria*, *Sunday in the Park with George*. Other: *Encores!*, concerts at Town Hall, Off-Broadway, National Tours. Aixa, Aidàn y Ana...mi vida.

DENISE WHELAN (Elizabeth/ Ensemble) Blessed to be back. WST favorites: *Aldonza*, *Man of La Mancha*; *Molly Malloy*, *Windy City*; *Velma*, *Hairspray*; *Side by Side by Sondheim*, *Pump Boys*. Fulton Opera House: *Mrs. Lovett*, *Sweeney Todd*; *Madame Thenardier*. Others: *Beggar Woman*, *Sweeney Todd* (Barrymore non.), *Arden*; *Pete n Keeley*, Act II. Next up is *Hairspray* at the Fulton.

JENNIFER HOPE WILLS (Rose Vibert) is thrilled to return to WST after starring as Sharon in *Finian's Rainbow* in 2005. Broadway: *Phantom of the Opera* (Christine), *Wonderful Town* (Eileen), *The Woman in White*, *Beauty & the Beast*. Paper Mill Playhouse: *Grease!*

(Sandy), *Camelot*. Pittsburgh CLO: *The Sound of Music* (Maria), *Carousel* (Julie).

DANA WINKLE (Ensemble/ Rose Vibert u/s) Walnut debut! Tours: *Pippin*, *42nd Street*, *Jesus Christ Superstar*, *Chicago*. Regional: Paper Mill, Goodspeed, NSMT, Westchester, TUTS, Casa, Starlight, Gateway, Fireside, NCT. Favorite roles: Gloria (*Damn Yankees*), Bonnie (*Anything Goes*), Cassie (*A Chorus Line*), Rosalind (*Moon Over Buffalo*). Equity member/ NYU grad. Love to family and incredible husband, Brian Ogilvie! danawinkle.com

ANDREW LLOYD WEBBER (Music) is the composer of *The Likes of Us*, *Joseph and the Amazing Technicolor Dreamcoat*, *Jesus Christ Superstar*, *By Jeeves*, *Evita*, *Variations* and *Tell Me On A Sunday* later combined as *Song and Dance*, *Cats*, *Starlight Express*, *The Phantom of the Opera*, *Aspects of Love*, *Sunset Boulevard*, *Whistle Down the Wind*, *The Beautiful Game*, *The Woman in White* and *Love Never Dies*. He composed the film scores of *Gumshoe* and *The Odessa File*, and a setting of the Latin Requiem Mass *Requiem*. As well as many of his own shows his producer credits include *Daisy Pulls It Off*, *Lend me A Tenor*, *Shirley Valentine*, *La Bête*, the ground-breaking Bollywood musical A R Rahman's *Bombay Dreams*, his smash hit production of *The Sound of Music* starring Connie Fisher and the film of *The Phantom of the Opera*. He pioneered television casting for musical theatre with the Emmy award-winning BBC series *How Do You Solve A Problem Like Maria?*. His awards include seven Tonys, three Grammys, seven Oliviers, a Golden Globe, an Oscar, two International Emmys, the Praemium Imperiale, the Richard Rodgers Award for Excellence in Musical Theatre and The Kennedy Center Honor. He currently owns seven London theatres including the Theatre Royal Drury Lane and the London Palladium. He was knighted in 1992 and created an honorary life peer in 1997.

DON BLACK (Lyrics) began writing lyrics after a brief career as a stand-up comedian in his native London. He made his West End debut as a theatre lyricist with composer John Barry on the musical *Billy*, at the Theatre Royal, Drury Lane, London. Black has worked with Andrew Lloyd Webber on productions including *Tell Me On A Sunday*, *Song and Dance*, *Sunset Boulevard*, *Starlight Express*, *Whistle Down the Wind* and *Bombay Dreams*.

WHO'S WHO

Throughout his career he has received an Oscar for his song *Born Free*, five Academy Award nominations, two Tony Awards plus three Tony nominations, five Ivor Novello Awards, a Golden Globe and many platinum, gold and silver discs. He has worked with some of the world's leading composers and has written over a hundred songs for motion picture including *The Italian Job* and *True Grit*. Black is currently working on a new musical, *Bonnie and Clyde*, scheduled to open on Broadway in early December, 2011. In 2007 he was inducted into the New York Song Writer's Hall of Fame, and it is this that Black says is his greatest career accolade to date.

CHARLES HART (Lyrics) was born in London and educated in Maidenhead and Cambridge. He has written words for musicals (*The Phantom of the Opera*, *The Kissing-Dance*, *The Dreaming*), opera (*The Vampyr*, BBC TV) and miscellaneous songs, as well as both words and music for television (*Watching*, *Split Ends*, Granada TV) and radio (*Love Songs*, BBC Radio). From 1990-1993 he served as a council member for the British Academy of Song-writers, Composers and Authors. His *Two Studies for String Quartet* was performed by the Sacconi Quartet in February 2005 at London's Purcell Room. Other work includes radio presenting, vocal coaching, accompanying, musical direction and musical arrangement and translation. He is the recipient of two Ivor Novello Awards and has been twice nominated for a Tony Award. He lives and works in London.

BRUCE LUMPKIN (Director) began his career as resident director for Theatre Under the Stars. Under Tommy Tune, he worked as collaborator on productions *My One and Only*, *Nine*, *Grand Hotel* and co-directed the West End production of *Grand Hotel*. Favorites: *Dodsworth* and *Grossingers* (world premieres), Off-Broadway *Summer of '69*. WST: *La Vie en Bleu* (American premiere), *Miss Saigon*, *Fiddler on the Roof* (Barrymore nomination), *Forbidden Broadway*, *Man of La Mancha*, *Carousel*, *Godspell*, *West Side Story*, *Evita*, *La Cage Aux Folles*, *Rags*, *Good-Bye Girl*, *Grand Hotel* and *Cabaret* (Barrymore Winner, Best Director and Best Musical). Thanks to Michelle, Ashley and Lyla for all of their love and support.

MICHELLE GAUDETTE (Choreographer) is glad to be back at WST. Her choreography career began with the show *Texas Legacies* in

the Palo Duro Canyon. Choreography credits include *Miss Saigon*, *Fiddler on the Roof* (Barrymore Nomination), *Forbidden Broadway*, *State Fair*, *Man of La Mancha*, *Carousel* (Barrymore Nomination), *Godspell* and *West Side Story*. WST performing credits include *La Vie En Bleu* and *Evita*. Regional performing credits: *Swing*, *Copacabana*, *Funny Girl*, *Victor/Victoria*, *Will Rogers Follies* (National Tour), *Tokyo Disneyland*, *Cruise Ships* and 9 years with the Radio City Rockettes in NY. Thanks to Bruce, Ashley and Lyla for all of their love and support.

DOUGLASS G. LUTZ (Music and Vocal Director) has conducted more than 125 productions across the United States and internationally. WST credits include *Fiddler on the Roof*, *The Producers*, *Les Misérables*, *Carousel* (Barrymore nominations), *Miss Saigon*, *Finian's Rainbow* and *West Side Story*, among others. Doug won the Carbonell Award for outstanding music direction of *The Most Happy Fella* at The Jupiter Theatre. Many thanks to Bernard, Mark, Bruce and Michelle. Love to Renee and Audra.

JOHN FARRELL (Scenic Design) has designed more than 40 productions with Bruce throughout the U.S. In New York he is currently the resident designer for Dicapo Opera since 1992 and the exclusive Set and Illusion designer for the Magician Criss Angel since 1993. This is John's 11th production here at the Walnut since 1997.

JACK JACOBS (Lighting Design) is thrilled to be back at WST. Over the past year, Jack received a Barrymore nomination for his work on WST's *Fiddler on the Roof*; lit the NYU Tisch Gala at Jazz @ Lincoln Center honoring Billy Crystal and last season's WST production of *Miss Saigon*. Jack continues to light Sol y Sombra Spanish Dance Co. and is resident designer for Hostos Center in New York where he lights concerts, plays and events for television.

DAVID TEMBY (Sound Design) has designed productions, tours and systems for Phoenix Theatre, The Fulton Opera House, Walnut Street Theatre, Childsplay Theater, the White House Communications Agency, Coca-Cola, IBM, CNN, the NFL and the U.S. Air Force. He is the General Manager of Clearwing Productions, a company that provides sound and lighting systems, designs and production management for productions such as Summerfest, Bob Dylan, Sammy Hagar, the Super Bowl, *Les Misérables*,

WHO'S WHO

Wedding Singer, Footloose, Seagate, National Semiconductor and Sony Playstation.

COLLEEN GRADY (Costume Design) is in her 15th season at Walnut Street Theatre. Selected Walnut design credits include *Hairspray, Les Misérables* (Barrymore Nomination), *La Cage Aux Folles* (Barrymore Award), *Evita, Of Mice and Men, Dirty Rotten Scoundrels, Oliver!*, *Eclectic Society, Fiddler on the Roof* (Barrymore Award), *Curtains, White Christmas, 39 Steps, Amadeus, Miss Saigon*. Much love to husband Mark Grady. For Mom and Dad.

DEBI MARCUCCI (Stage Manager) has worked her way up through the ranks here at WST over the past 19 years and is now in her 14th season serving as Mainstage SM. She's also recently had the pleasure to direct the musical *No Way To Treat A Lady* at the Alpine Theatre Project, as well as *The Ugly One, Lobby Hero* and *Mr. Bailey's Minder* in WST's Studio 3. A South Philly native, Debi is also an enormous animal lover and proud mom to her rescued dogs and cat (rest in peace, Boomer, Mina and Diva)! Love to her fiancé, Chris!

LORI AGHAZARIAN (Stage Manager) This is Lori's sixth season here at the Walnut. Prior to joining WST, Lori spent seven seasons as PSM at the Prince Music Theater. Freelance credits include Wilma Theater, Opera Co. of Phila., Pig Iron Theatre Co., 1812 Productions, PTC, and the Eugene O'Neill Theater Center. In addition to stage managing, Lori spent five years as the Box Office Manager for the Phila. Live Arts Festival/Philly Fringe.

JOEL MARKUS (Production Manager) Previously, he worked for 10 seasons at the Indiana Repertory Theatre; Geva Theatre Center in Rochester, NY; the Weston Playhouse in Vermont; American Players Theatre in Spring Green, Wisconsin; and North Shore Music Theatre in Beverly, Massachusetts. Joel is a graduate of Indiana University and is originally from Miami, Florida.

MARK D. SYLVESTER (Managing Director) Mark's extensive career has spanned Summer Stock to Broadway as an actor, stage manager, box office treasurer, theatre manager, marketing and public relations director and general manager. This season he is celebrating his 18th season at the Walnut. At the age of 21 he managed his first theatre, New York's historic Provincetown Playhouse. Mark spent several years working with commercial theatre. Since

1987, he has devoted his career to non-profit theatre companies including six seasons at Miami's Coconut Grove Playhouse. To date, Mark has been associated with more than 400 stage productions. An avid collector of musical theatre recordings, his collection contains nearly 3,000 cast albums from around the world. Widely regarded as a theatrical marketing expert, Mark lectures and consults with organizations internationally. He has served on many boards including the Theatre League of South Florida, Theatre Alliance of Greater Philadelphia and currently the National Alliance for Musical Theatre. With Bernard Havard he co-authored the book *Walnut Street Theatre*, published by Arcadia Publishing. Since he joined the Walnut in 1994, it has become the most subscribed theatre company in the world.

BERNARD HAVARD (President and Producing Artistic Director) *Vox Populi* (The Voice of the People) was written on the Walnut Playbills in the 1800s. Whenever the Walnut has strayed from a populist program, the theatre has gone bankrupt. When I came here 29 years ago, we had no programs and no audience. Today we

WHO'S WHO

enjoy the largest subscription of any theatre in the world. So, my thanks to our loyal audience and a warm welcome to newcomers who enjoy and believe in what we do. I have tremendous admiration for the artists who have dedicated their lives to the theatre and the Walnut, in particular. Our theatre is a non-profit 501-C3 institution and we rely on contributed income to extend our reach into the community. Last

season we reached more than 110,000 students in our city schools. We have 40 trustees who give their time, wisdom and contributions to help guide this historical treasure. I came to the Walnut in 1982, and I am as excited now about our future as I was in the beginning. My heartfelt thanks to all who enter this theatre. For my biography, go to Theatre History on our web site at WalnutStreetTheatre.org.

WALNUT STREET THEATRE

BOARD OF TRUSTEES

Chairman	Ed Ryan
Immediate Past Chairman	Richard Woosnam
Chairman Emeritus	Louis W. Fryman, Esq.
Chairman Emeritus	Matthew Garfield
Chairman Emeritus	John D. Graham
Vice Chairman	Kenneth E. Kirby
Vice Chairman	Robert L. B. Harman
Vice Chairman	Richard A. Mitchell
Treasurer	David S. Blum
Secretary	Theresa E. Loscalzo, Esq.

Camille Andrews	Ann M. Liacouras
Valli Baldassano	Ben Lipitz
Yvette D. Bright	Jim Lutz
Thomas J. Coultres	Audrey Merves
Louis J. D'Ambrosio	Francis J. Mirabello
Richard L. Fagnani	Brad A. Molotsky
Jeffrey Ferro	Ann Marie Richter
Christopher Franklin	Edward Satell
Barry Genkin	Keith D. Schneck
Albert A. Giagnacova, ChFC, CL	Jon C. Sirlin
Lauren A. Harrington	Martin W. Spector
Bernard Havard	Ellen Tobie
Denise Daher Hodgson	Todd C. Vanett
R. Todd Ireland	Thomas E. White, Jr.
Bowen J. Knarr, Jr.	

ALUMNI TRUSTEES

Ashok N. Bakhru, Bruce Belzak, Maureen Breakiron-Evans, George M Chamberlain, Jr., Rebecca R. Clark, Gerald Cope EAlA, Allan M. Dabrow, Joseph E. Ellis, Sr., Donald Gleklen, Bruce Goldberg, Terry Graboyes, Michael Hagy, Joanne Marie Harmelin, Jeremy D. Johnson, Ira L. Kamens, Robert A. Korn, Norma S. Langworthy, Marc S. Lapayowker, Craig R. MacQueen, Kyle Anne Midkiff, George W. Murphy, Renee H. Rollin, Dolly Beechman Schnall, James M. Tholey, Philip J. Webster

HONORARY MEMBERS

Hon. Frank DiCicco, Mr. Charles Fuller, Ms. Carole Haas Gravagno, Ms. Celeste Holm, Ms. Anne Jackson, Mr. Neil Simon, Mr. Stephen Sondheim, Ms. Lily Tomlin, Mr. Eli Wallach

WALNUT STREET THEATRE STAFF ARTISTIC

President & Producing

Artistic Director	Bernard Havard
Assistant to the	
Producing Artistic Director/Casting	Kate Galvin
Casting/Literary Apprentice	Bren Thomas
Literary Manager	Beverly Elliott

ADMINISTRATION

Managing Director	Mark D. Sylvester
Assistant to the Managing Director/ Company Manager	Jessica Doheny
General Management Apprentice	Andrew Karp
Controller	Len Karabell
Assistant to the Controller	Kristen Burke
Audience Services Manager	Angelia Evans
Assistant Audience Services Manager	Connor Hanley
Audience Service Apprentices	Alyssa Glueck, Corriane Oster
Refreshment Services Manager	Robert Nealis
Facilities Manager	Bruce Myers
Maintenance Engineer	Robert Lee Lewis
Maintenance Mechanics	Keisha Bailey, Denise Edwards, Dionne McClennan, Renee Rayfield, James Reagan, Victoria Robinson

DEVELOPMENT

Director of Institutional Advancement	Rebekah Sassi
Associate Director of Development	Robert Weinstein
Individual Giving Manager	Diana Blasdel
Special Events Manager	Bonnie MacDonald
Grants Apprentice	Claire Lutz
Development Apprentice	Charles Nork

Corporate Development

EDUCATION

Director of Education	Thomas P. Quinn
Theatre School Coordinator	José M. Avilés
Outreach Coordinator	Caroline Leifp
Residency Coordinator	Ashley Kerns
Education Apprentice	Luraine Armandt
Acting Apprentices	Lauren Fitzgerald, Nate Golden, Samantha Pearlman, Dominic Santos
Theatre School Faculty	José M. Avilés, Kaleo Bird, Jesse Bernstein, Michael Borton, Kristen Burke, Kate Galvin, Sharon Geller, Susan Gish, Sam Gish, Heidi Hayes, Meghan Heimbecker, Jerrell Henderson, Noah Herman, Ashley Kerns, Heather Krause, Caroline Leifp, Druce McDaniel, Susan Nicodemus Quinn, Thomas P. Quinn, Seth Rozin, Amanda Snarski, T.J. Sokso, Susan Riley Stevens, Ellen Tobie, Leah Walton, Greg Wood, Holly Yokley

MARKETING

Director of Marketing and Public Relations	Ralph Weiss
Communications Manager	Amy D. Rodgers
Marketing Assistant	Andrew Terranova
Marketing Apprentice	Jan Tonon
Public Relations Apprentice	Chelsea Martin
Box Office Treasurer	Rick Dougherty
Assistant Box Office Treasurer	Tom Brzozowski
Ticketing Services Manager	Mandy Targoff
Associate Ticketing Services Manager	Kristine Schuck
Senior Ticketing Service Agents	Liz Childs, Mary Kate Cusack, Carol Douglas, Alison Hoban, John Jonas, Sarah Rowland, Sarah Schol, Michelle Wittle
Tele-Sales Manager	Andy Burr
Assistant Tele-Sales Manager	Santina Andretta
Senior Tele-Sales Agents	Rich Anderson, Pat Beaudet, Anne Marie Borget, Lynne Chapman, Ethel Garrett, Roslyn Horan, Ned Kolpan, Adam Markind, Larry Mays, Akeem Nixon, Laurene Nixon, Aja Pollak, Marie Ricciuti, Stephanie Schgier, Kea Stewart, Rob Waldman, Elliot Waters, Steve Weinberg, Robert Wenglicki

PRODUCTION

Production Manager	Joel Markus
Assistant Production Manager	Melissa Buffaloe
Production Management Apprentice	Lauren M. Bieber
Stage Managers	Lori Aghazarian, Debi Marcucci
Stage Management Apprentices	Amanda C. Kircher, Kathleen Ringwood
Studio 3 Stage Manager	Angela Cucco
Technical Director	Dan Schultz
Studio 3 Technical Director	Andrew Thompson
Shop Management Apprentice	Alex M. Windle
Head Carpenter	Peter Mohan
Carpenters	Cornelius de Groot, Eric LaValley
Carpenter Apprentices	Mark Molchany, Seth Thomas Schmitt-Hall
Scenic Charge	Kathryn Kolb
Assistant to the Scenic Charge	Leslie Curd
Scenic Apprentice	Michael Leon
Properties Manager	Glen Sears
Properties Apprentices	Briana Choynowski, Brian Froomjian
Properties	Charles Margies, Meredith Rapkin
Costume Shop Manager	Colleen Grady
Assistant to the Costume Shop Mgr.	Mary Folino
Costume Apprentices	Jillian R. Keys, Amanda Claire Wolff
Costume Stock Coordinator	Stephanie Muntone
Stitchers	Gretchen Ellis, Rebecca Kanach, Julia Poiesz
Lead Dresser	Deborah Holloway
Dressers	Stephen Gravelle, Alison Levy
Wig Design	Gerard Kelly
Wig/Wardrobe Apprentice	Margaret Kane
Head Carpenter	Stephen Dickerson

Head ElectricianMark Grady
 Head PropertiesBill Lloyd
 Head FlymanAaron Wilson
 Head Sound EngineerMerlin James Alexandre Salisbury
 Stage Crew ApprenticeGeorge Ross Fisher V
 Video ConsultantJoe McGuire
 Assistant Lighting Designer.....Lily Fossner
 Dance CaptainShaun Parry
 2nd ASM.....Peter Schmitz
 Synthesizer Programming.....Murray Snyder

Ten-Year-Plus Administrative Volunteers:
 Pearl Carpel



Actors' Equity Association (AEA), founded in 1913, represents more than 45,000 actors and stage managers in the United States. Equity seeks to advance, promote and foster the art of live theatre as an essential component of our society. Equity negotiates wages and working conditions, providing a wide range of benefits for its members, including health and pension plans. AEA is a member of the AFL-CIO, and is affiliated with FIA, an international organization of performing unions. The Equity emblem is our mark of excellence. actorsequity.org



THIS THEATRE OPERATES UNDER AN AGREEMENT BETWEEN THE LEAGUE OF RESIDENT THEATRES AND ACTORS' EQUITY ASSOCIATION, THE UNION OF PROFESSIONAL ACTORS AND STAGE MANAGERS IN THE UNITED STATES.



BACKSTAGE EMPLOYEES AND SCENE SHOP EMPLOYEES ARE REPRESENTED BY THE INTERNATIONAL ALLIANCE OF THEATRICAL STAGE EMPLOYEES. (I.A.T.S.E.).



The Director and/or Choreographer is a member of the **STAGE DIRECTORS AND CHOREOGRAPHERS SOCIETY**, a national theatrical labor union.



UNITED SCENIC ARTISTS REPRESENTS DESIGNERS FOR THE AMERICAN THEATRE



MUSICIANS REPRESENTED BY THE AMERICAN FEDERATION OF MUSICIANS.



The mission of the Walnut Street Theatre Company is to sustain the tradition of professional theatre and contribute to its future viability and vitality. It does so through the production and presentation of professional theatre; the encouragement, training and development of artists; the development of diverse audiences; and the preservation and chronicling of its theatre building, a National Historic Landmark.



The Walnut Street Theatre proudly participates in the Barrimore Awards for Excellence in Theatre, a program of the Theatre Alliance of Greater Philadelphia.



Walnut Street Theatre is a member of the Greater Philadelphia Cultural Alliance, Theatre Alliance of Greater Philadelphia, Citizens for the Arts in Pennsylvania, League of Historic American Theatres and the National Alliance for Musical Theatre.



Walnut Street Theatre receives support through a grant from the Pennsylvania Council on the Arts, a state agency funded by the Commonwealth of Pennsylvania.



U.S AIRWAYS

The Walnut acknowledges with appreciation a grant from the Philadelphia Cultural Fund.



US Airways is the official airline of Walnut Street Theatre.



Walnut Street Theatre thanks our Media Sponsors: B101 and NBC 10.



Walnut Street Theatre acknowledges with appreciation Bryce's Catering Company (Wynnewood, PA) for their elegant catering of theatre events.

Independence STARTS HERE!



Accessibility Equipment, Training and Marketing provided by Independence Starts Here, the statewide cultural accessibility program of VSA PA/Amaryliss Theatre Co., jointly led in different regions in PA by cultural partners in that region. In Greater Philadelphia, Independence Starts Here is jointly led by Art-Reach, Inc.



ART-REACH
 where the region meets



FOUNDED 1809

AMERICA'S OLDEST THEATRE -- PHILADELPHIA'S MOST POPULAR THEATRE COMPANY

WALNUT STREET THEATRE

825 WALNUT STREET • PHILADELPHIA PA 19107

Walnut Street Theatre wishes to express gratitude to the following individuals, corporations, foundations and government agencies for their contributions to the Annual Fund:

Forrest Society (\$25,000+)

B-101 FM	PA Department of Community & Economic Development	The Shubert Foundation
Blank Rome LLP	PECO	Louis & Bessie Stein Foundation
Citizens Bank	Pennsylvania Council on the Arts	Fund No. 2
Courier Post	The Pew Charitable Trusts	Stradley Ronon Stevens & Young LLP
The Greater Philadelphia Cultural Alliance	The Philadelphia Foundation	The Wallace Foundation
Syde Hurdus Foundation	The Philadelphia Inquirer	William Penn Foundation
JAMS Foundation	Philadelphia Weekly	WRTI
NBC 10	Progressive Business Publications	

Booth Society (\$10,000+)

12th Street Gym	The Hamilton Family Foundation	The Philadelphia Cultural Fund
Hon. & Mrs. Robert E. Andrews	Bernard Havard & Judy Capuzzi Havard	Ed & Cyma Satell
Aqua	Independence Foundation	US Airways
American Express	Josephine Klein	Verizon
The Arcadia Foundation	Liberty Property Trust	The Jerome M., Spencer & Arnold Zaslow Family Fund
Fox Rothschild, LLP	Lincoln Financial Group Foundation	
Matt & Marie Garfield		

Barrymore Society (\$5,000+)

David Blum	Jeff & Janie Ferro	The Graham Company	Ann M. Liacouras
The Louis N. Cassett Foundation	Gerald & Helga Finsen	Bob & Louise Harman	Macy's
Louis J. D'Ambrosio	The Louis W. Fryman Scholarship Fund	Independence Blue Cross	Mr. & Mrs. Francis J. Mirabello
Mr. Peter R. Denton & Mrs. Audrey J. Denton	Bruce Goldberg & Terri Hartman	Jane James	Richard A. Mitchell
The Dow Chemical Company	The Horace W. Goldsmith Foundation	Virginia & Harvey Kimmel	Pricewaterhouse Coopers
eResearch Technology, Inc.		Arts Education Fund of The Philadelphia Foundation	Ann Marie & Irv Richter
		Janet & Lew Klein	Richard & Diane Dalto Woosnam

Cushman Society (\$2,500+)

Anonymous	The Rebecca Capuzzi Memorial Fund	Mr. & Mrs. Jeremy Johnson	Stephen & Lucy Paccione
The ARAMARK Charitable Fund	Mr. & Mrs. Paschal B. De John	Sonya & Joseph Kelly	Ed Ryan
The Barra Foundation	Marilyn J. Faust	Ken & Elaine Kirby	Schnader Harrison Segal & Lewis LLP
Mr. Bruce Belzak	Rhoda & Louis Fryman	Joseph L. Lomax	Jon C. & Karen P. Sirlin
Dan & Reeva Benau	Steven I. & Genevieve Gross	Terry Loscalzo	Roger & Kathi Smith
Yvette Bright	The Hassel Foundation	Christopher & Michele Mahle	Martin & Cindy Spector
Drs. James Byers, III & Stephanie Chuipek	R. Todd Ireland	Robert Peter Miller	James & Rose Vendetti
		Maureen E. Molloy	

Jefferson Society (\$1,500+)

Anonymous Sucha O. Asbell Eugene, Joann & Jennifer Bissell Melvin Cardonick Mr. George M. Chamberlain Thomas J. Coultres Mr. & Mrs. Granville and Charlotte Crothers Allan & Tina Dabrow Carolyn & Gordon Daniels Julie & David Eishower The Herman & Jerry Finkelstein Foundation	Anthony & Laura Fiorenza Al & Luci Giagnacova Mr. & Mrs. Charles L. Ginder Herman Goldner Co. John & Elizabeth Gontarz Mr. & Mrs. John D. Graham Mark B. Hassenplug The Haverford Trust Company Kenneth & Nancy Hellendall Mr. & Mrs. Arnold Herenstein Charles W. Horn, III & Patrick M. Rumaker Harold & Geraldine Hurff	Stephen E. Lore Chase & Susan McDaniel Mr. & Mrs. Edward J. Mitchell Dr. Jonni S. Moore Mario & Rosemarie Nicolais Ann & Lanny Patten Mr. & Mrs. Vincent Redes and Morgan Rosenlund Family Foundation Rebekah Sassi & Kirk Berlenbach James D. Scully, Jr. & Marlene Stoczko	Ronald, Leslie & Amanda Shur William & Mary Simpson Target Mr. & Mrs. Jim Tholey Kathryn S. Hayes & Victor J. Tortorelli Dr. & Mrs. Alan and Edye Twer Ms. Marion M. Walter Jim & Stephanie Ward Dr. & Mrs. Franklin West Mark & Kathryn West Joann White Morton & Anita Wolkowitz
--	--	--	--

Kemle Society (\$1,000+)

Anonymous (2) Matthew & Megan Abbott Blaine Applegate Ash Family Foundation Valli Baldassano & Lee Bellapigna Bazelon Less & Feldman, P.C. Sydney Beckett Bradford White Corporation Mr. & Mrs. Henry Brasteler, Jr. Arthur J. Bretnall, Jr. & Susan M. Cherwien Joseph & Suzanne Calabro Commonwealth Land America Title Company Stephen & Sandy Daukaus Mr. & Mrs. Anthony DeCarlo Sandy & Joanne D'Orazio Andrew, Amos, A.J. & K. Driban Paul & Rebecca Eckert EMSCO Richard & Mary Fagnani	Maria Farnos & Herbert Lesnoy Sylvia & Harold Farrey The Ani Fiardimondo Scholarship Fund Firsttrust Bank Sylvan & Sybil Freedman Mr. & Mrs. Gary Fulwider Aileen Gergley Mrs. Louise Gilbert Dr. Mindy Goldberg & Charles Rose Ron & Sandy Gould Graboyes Commercial Window Company James Herman, Esq. & Brenda Lee Eutsler, Esq. Mr. & Mrs. C. Clark Hodgson, Jr. Ron & Sandy Johnson James T. Johnston, Sr. George & Joan Katilus KPMG	Norman & Hermie Kranz Dorf Mr. & Mrs. Leonard Kraus Tony & Jane Lane Dr. Marc S. Lapayowker Mr. & Mrs. Gordon Lapinski Ben Lipitz LMC-Plasticsource Frank & Darlene Lordi Christian Ludwig Lumbermens Merchandising Corp. James Lutz Paul J. Marcotte McCormick Taylor, Inc. Ms. Kyle Anne Midkiff Brad A. Molotsky Mr. & Mrs. Glen D. Myers Mr. & Mrs. Henry Newnam Thomas Obade, MD Alan Jay Ominsky, MD & Judge Marlene F. Lachman Hayler, Robbie & Meighan Osborn	Pennsylvania Lumbermens Mutual Insurance Co. Kristen & Jay Petroff Phoenixville Federal Bank & Trust Frank Plateroti & Dr. John Mully John & Michelle Prevoznik Scott & Sharon Rankin Michael J. Reitter & Allen Hampton Dr. Renee H. Rollin Robert & Marilyn Rubin Joyce Seewald Sando Dolly Beechman Schnall Keith Schneck Nancy M. Seitz Bud & Betty Shapiro Salem Shuchman & Barbara Klock Jeffrey M. & Bernadette Spurling Dr. Diane Spatz	Steven & Lynne Spencer Harry E. Springfield, Jr. Stanton Systems Mr. & Mrs. Frank Stearns Mrs. Frank W. Strickland Jesse W. & B. Lois Stuart Mark D. Sylvester Ellen Tobie Lori & Robert Scott Uhl United States Liability Insurance Group Todd & Barbara Vanett The Vanguard Group Dr. & Mrs. Anthony W. Villare Richard Volpe Thomas White Kathleen Wojcik Debbie & Ron Wolf June & Steve Wolfson Forrest & Kathy Worrell
--	---	---	---	---

Producing Angels (\$500+)

Anonymous Howard Aaronson Drs. Randy Ackerman & Donna Churlin Edward & Roseann Adamczyk David J. Addis Mr. Winfield E. Akeley Charles & Helen Alexander Paul M. & Mary Lee Anderson Elizabeth Avery Rena & Sam Barnett Dolores & Ronald Bowlan Tim & Mary Ann Bramhall George & Nancy Brodie Tracy A. Broomall Michael J. & Alice L. Brown Francis J. Brzozowski Carol & Carl Burkhardt Jean & Paul A. Burrough, Jr. Mr. & Mrs. Leslie R. Butler Ms. Elaine Carlson	John Cerquitella, Jr. Carol & John T. Chumbley Dr. Marie A. Conn Mr. & Mrs. Robert H. Cook Mrs. Robert Cornforth ReRe & Peter Dooner Joseph D'Orazio Mr. Richard Dougherty Mr. & Mrs. Timothy Duffy Shafiq Ebrahim Mr. & Mrs. Dennis Engers Execuvend Services Stanley & Maryann Fisher Gerald & Jean Frank Susan M. Garber Gelman & Pelesh, PC Dr. & Mrs. Herbert I. Goldberg Lynne Z. Gold-Bikin William Goldman Foundation Edward V. Grattini Sandra & Joel Hanes	Mr. & Mrs. Donald Hann Jim & Claudia Haviland Frances Sherr & Robert Hess Thomas E. Swazuk & Linda Hiortdahl Tom & Paula Hollencamp Stephen & Mary Holt Tim & Tina Holt Tom & Joyce Hawley Jim & Carol Hunsicker Emeline T. Hunter Peter & Joyce Klugherz George F. Koch, Jr. & Santo A. DiDonato Judith & William Labkoff Roland & Dorothy Lewis Mr. William A. Loeb Donald J. & Laura-Jean MacDonald Lee & Lauri MacMinn Kenneth Mallin	Mr. & Mrs. Marchioli Edward & Roberta Martin Mr. & Mrs. Arthur Mattia Mark & Cathy Medway Rick Meehl Miller & Flink Families Steven & Deborah Mongiardo John & Linda Nasuti Marcia & Don Pizer Phyllis & Charles Polin Rita & Alan Polonsky Kathleen Quinn & Paul Cottone Raffles for BRIDGE Pete Ricchiuti Mr. & Mrs. Robert K. Roush, Jr. Daniel & Wendi Ruddy Mr. & Mrs. Thomas Scannapieco Ruth Schumacher Ann Seiberlich William & Dolores Seiberlich	Mr. & Mrs. Alex D. Shalaway Kathy & Don Shannon Dr. Robert G. Sharrar Dolph Simons Mr. & Mrs. F. Slack William R. Snell, Esq. Zalig & Gail Stein Albert Stevens Gail & Terry Sweet Mr. & Mrs. Donald C. Tantum Mr. & Mrs. Richard T. Taylor Pat & William Turbett John & Victoria Turlik Mr. & Mrs. N. Vassil Mel & Gail Weinstein Hon. Diane M. Welsh Mr. & Mrs. Jack Whittaker Timothy & Leora Wile Laurie & Paul Young Doug Zegel Joseph & Renee Zuritsky
---	--	---	--	--

Directing Angels (\$300+)

Anonymous (2)
 Mr. & Mrs. Donald Alderfer
 Jean I. Alfieri
 Ms. Margaret M. Alford
 Marylee & Stuart Alperin
 Mr. Albert Antrabus
 Joseph J. Arena, Jr.
 Mary R. Barry
 Dr. & Mrs. Kenneth J. Basalik
 Jane P. & Bradford E. Beadle
 Marie L. Berenato
 Drs. Deidre & Michael Blank
 Katherine B. Blenko
 Beaty Bock & Jonathan Miller
 Mrs. Lois Boreen
 Barbara J. Bradley
 Dr. Cheryl A. Branon
 Mark D. Braverman
 Dr. Jonathan Brill
 Dr. Rachel Pruchno Brill
 Virginia Brooks &
 Lee and Penny Flory
 Jim & Mary Brown
 Dr. & Mrs. Bernard and
 Pamela Brownstein
 Marilyn R. Burgin
 Mr. & Mrs. John J. Burkley
 William & Joann Butler
 Mr. & Mrs. Robert J. Callahan
 Elizabeth F. Casmas
 Ms. Nancy L. Cervino
 Mr. & Mrs. Joseph Chudzinski
 Catherine Chupeik
 E.H. Loy Chun
 Kathy Cohen
 Viola D. & John C. Corbin
 Mr. & Mrs. Alan Craig
 Kimberly & Walter Cwierniewicz
 Stephen Dante &
 Karen Fung Dante
 Becky Davis
 Mr. & Mrs. James C. Deever
 David M. & Susan Y. Devor
 Nicholas & Diane DiMarino
 Mr. James V. DiToro, Jr.
 Dr. & Mrs. Charles Driben
 Rose Dugan
 Mr. & Mrs. John C. Eastlack, Sr.
 Mr. & Mrs. Melvyn Efron
 Robert English
 Ray & Ruth Fausak
 Bill & Lara Faust In memory of
 Dorothy M. DiLucia
 Michael Feeny
 Mr. & Mrs. Paul B. Ferguson
 Rick & Kim Ferrin
 Peter & Adrienne Feuer
 Kalman & Suzan Fine
 Josie Fischer
 Rex S. Fox
 Dr. & Mrs. S.M. Free
 Raymond Gilby
 Valerie & David Gladfelter
 Don & Carol Gleklen
 Dr. & Mrs. Alexander Green, III
 Jessica Powers Greenfield
 Ms. Marguerite Greenleaf
 David & Carol Griscom
 Rev. & Mrs. George R. Gunn, Jr.

Harold & Louise Haines
 Lisa & Tom Murphy
 Louis & Eileen Hermans
 Dorothy Alicia Hickok
 James R. Hild
 Thomas & Laura Hillanbrand
 Jacqueline H. Smith &
 Jerry B. Hook
 Larry & Karen House
 Frank Houston
 Jake Hubik & Chuck Samaha
 Bruce & Alice Hudson
 Robert & June Hudson
 Mike & Betty Hummel
 Ms. Deborah Iacovone
 Karen & Joseph Israel
 Joan F. Jaffe
 Mr. Jay B. Jones
 Joann J. Jordan
 Marcia & Ned Kaplin
 Paul & Heather Keller
 George Kelly &
 Toby Needleman
 John W. Kemble
 Craig & Marilyn Killough
 Gerhart L. Klein, Esq.
 Nelson & Sherrie Klein
 Mr. & Mrs. W.A. Kline
 Rex & Regina Knowlton
 The Kontostathis
 Mrs. Esther Kurtz
 Harry & Stacy Labelle
 Ms. Mary H. Ladd
 Mr. & Mrs. Leo Lampman
 Dr. & Mrs. Arnold Lincow
 and Family
 Ms. Billie Marie Lohr
 Maureen Lord-Benson
 Mr. Robert J. Macbeth
 Boyd & Judith Mackleer
 Tony Mannino & Lori Thurston
 Wayne Marquardt & Chris Tadeo
 Mr. & Mrs. Floyd Martell
 Mr. Vincent Massimiano
 Mr. & Mrs. Steve Mazda
 Mr. & Mrs. J. McCarthy
 Donald & Martha McIlvain
 Paul & Karen McTamney
 Rev. & Mrs. Raymond &
 Deborah Merriweath
 Benjamin & Marie Miller
 Harvey & Kathleen Miller
 Dr. Ronald & Sandra Miller
 Stephen & Barbara Miller
 Daniel P. Monbouquette
 Harry Neidig
 Frank & Loretta Nichols
 Dr. & Mrs. R. Barrett Noone
 Douglas & Judith O'Dell
 Amy & James O'Keeffe
 Mr. & Mrs. Thomas O'Reilly
 Theodore & Sandra O'Tanyi
 Deborah Ott & Angel Macosieb
 Mary & Daniel Palmer
 Mr. & Mrs. James M. Parsly
 Dr. & Mrs. Joseph Perno
 Kenneth Petrini
 Mr. & Mrs. Harry Pinsky
 Rhoda Polakoff
 Dr. David Roezer

Wayne & Karen Ranbom
 Bruce & Cynthia Rangnow
 Patricia Rayfield
 Anna K. Reimann
 Ms. Meryl Stern Sacks
 Mr. & Mrs. R. Sampson
 Alan & Linda Sanders
 Gerald & Karen Scena
 Dona & Allen Schneider
 Donn & Romesa Scott
 Lela & Don Seidel
 David & Joanne Shafter
 Linda J. Sheedy
 C.A. Sherman
 Carol & Douglas Sherwood
 James L. Smith
 Mr. & Mrs. Peter J. Smith
 Mary Rose Smochek
 John Solari
 Bill Spencer
 Mr. & Mrs. Donald Staudt, Sr.
 Donald & Suzanne Strable
 Sherryll & Ted Strand
 Judge & Mrs. Samuel L.
 Supnick
 H. Selwyn & Judith S. Torrance
 Mr. & Mrs. Miguel Velez
 Gary & Barbara Vernick
 Lew & Hella Volgenau
 Donna Votto
 Marie Wagner
 Margot Waitz & Gordon Manin
 Jeff Walsh & Mark Klingensmith
 James & Kathleen Walters
 Willis & Mary Jane Warfel
 Raymond & Elizabeth Weddington
 Rob & Amy Weinstein
 Alan Wender
 Jerry & Nancy Weslosky
 Mr. & Mrs. Howard White
 Mr. & Mrs. Michael Whitesell
 Victoria Werth &
 Kevin Jon Williams
 Mr. & Mrs. G. V. Willman
 and "Great"
 Dr. John H. Wolf, Jr.
 John S. Wydrzynski
 Susan & Kevin B. Zebrowski

Benefactors (\$200+)

Anonymous (5)
 Sandra Abraham
 Susan Adamczyk
 Dr. Milton & Beverly Adams
 Mr. & Mrs. James Ahlum
 M. Faith Angell &
 Kenneth Carobus
 Mr. Roy Backes
 Harriet & Wister Baisch
 Mr. & Mrs. Charles Barnard
 Ellen E. Barrett
 Joan & George Bart
 Mr. & Mrs. Robert Bauers
 Ronald & Joyce Bayer
 Florence & Ted Begun
 Elaine & Edward Benoff
 Gertrude Bernardini
 Ruth Ann Bice
 Barbara & Brian Binney
 Drs. Stephen & Maribeth Bogush

Theresa Brennan
 Mr. & Mrs. David Breskman
 Peter & Jane Bridge
 Shelley & David Brietling
 Mr. & Mrs. Thomas E. Brightman
 Dawn & Dave Broadbent
 Eileen & Bernard Brown
 Thomas F. Brzozowski
 Melissa Buffaloe
 Stephen & Susan Bush
 Mayor & Mrs. Edward Campbell
 Larry Cardonick
 Robert & Cheryl Carfagno
 Wendy & Joseph Casillo
 Carmine Catalana
 Loretta Catrambone
 Mr. & Mrs. Carl Cencetti
 Mark & Barbara Chamberlain
 Mr. & Mrs. Dale E. Choate
 Anastasia Chrysofos
 Elaine M. Clay
 Dr. & Mrs. Vaughn Clemens
 Allan & Rose Coletta
 Edward T. Collins, Jr.
 Marilyn J. Conwell
 Christine & Kenneth Coulter
 Charles Coyle
 Richard & Diana Crean
 Mr. & Mrs. Albert Crescenzo
 Rich & Cindy Croft
 Mrs. Sarah A. Cullen
 Robert & Sophie D'Agostino
 Gerald & Sonia Defelice
 Mr. & Mrs. Richard Delp
 Margaret P. Dempski
 Mr. & Mrs. Joseph P. Denny
 Dr. Lawrence & Barbara Deutsch
 George Drach
 Edward & Mary Duffy
 John & Claudia Dustin
 Francis M. Dziuba
 Arin Edelstein
 Donald & Linda Ehma
 Steve Eisenstein & Lisa Longo
 Marie & James Ely
 Jean Berg Eselgroth
 Linda & Steven Evans
 Theresa Fabiani
 Paul & Judy Farber
 Leona Fierszt
 Bill Flannery Automotive
 Leona Flood
 E. Ross & Alma Forman, P.E.
 Drs. Barbara & Len Frank
 Mr. & Mrs. Kenneth Frank
 Boyd Freeman
 Melvyn Freid
 Jo Ann Fricker
 Larry Friedman
 Stephen & Marian Galer
 Dr. Russell & Mrs. Laura
 Gallagher
 Kate Galvin
 Brenda Gaydosh
 Mr. & Mrs. Barry H. Genkin
 Christopher & Johanna Gilbert
 Hal & Bernice Goldberg
 Dan Goloveyko
 Michael & Suzanne Good
 Susan M. Graham

Dr. Earl & Ina Gross
 Jeanne & Michael Guiliano
 Caroline & John Hagen
 Hahn Family
 Howard Hammer
 Judy A. Hansen
 William Hartraanf
 James Hartz
 Kathy & Chris Hein
 Lynda & David Herendeen
 Diane Hesley
 Connie L. Hewitt
 The Higgins Family
 Joanne Hill
 L.G. Hoffman Nurseries
 Mr. & Mrs. John R. Hogan
 Durrell & Patricia Hollenbach
 Marcia Hunter
 Joe & Thomas E. Hyden
 Joseph Imhof
 Kevin & Fran Jardine
 Dr. & Mrs. Gerard Johnson
 Joseph H. Johnson
 Margaret Kelly
 John Kent
 Walt Kissel
 Tamara & Michael Kline
 Donald F. Kohler, Sr.
 Richard Koory
 Janet & Michael Kott
 Talbot & Charlotte Kramer
 Lehea P. Kuphal
 Ms. Abbie Lampe
 Dr. & Mrs. Scott Landvatter
 Karl & Nina Lane
 Earl & Mary Laney
 Joe & Andrea Leahy
 Harry & Carol Leopold
 Linn One Hour Cleaners, Inc.
 Carol & John Little
 Lynn & James Litzke
 June Lombardi
 John Lonergan &
 James Johnson
 Robert & Sharon Long
 Janice Longo
 Patricia Lukaszow
 Reaves & Fran Lukens
 Carol W. Madeja
 Theodore Malpezzi
 Mr. & Mrs. Jeffrey Mannings
 Dr. & Mrs. Thomas Marchiondo
 Mr. Robert Marcinkowski
 Joseph & Margaret Martelli
 Mr. & Mrs. Joseph Maseychik
 Mr. & Mrs. Carl Mason
 Karen V. Matz
 Rita A. McBride
 Ilene Wolf McCaffrey
 Jennifer McClellan
 Ellen & Gary McDowell
 Mr. & Mrs. Thomas H. McGann
 Dr. & Mrs. James A. Meadowcroft
 Luisa Mercuri
 Kenneth & Connie Merritt
 Kim & Scott Meyer
 Patricia S. Meyer
 Mr. & Mrs. Antonino Micela
 Carol Micklin
 Arthur P. & Marjorie L. Miller

Per & Connie Montero
Rick Moog & Pat Martin
Mr. & Mrs. Kenneth W. Moore
Mary E. Moore
Patricia M. Moore
Herman & Barbara Moser
Gary & Marianne Mowery
Gerry & Brenda Mullane
J. Robert Nagy &
Ellen Weisberg
Gene & Sally Nicholls
Mr. Walter Norris
Alan P. Novak
Mr. & Mrs. Michael Novakovic
John & Pat O'Connor
Dr. Albert T. Olenzak
Mr. & Mrs. Pierre Olivero
Dr. Arelyne Pacho-Ramos
Mr. & Mrs. Frank Paget
Frank Palopoli
Adriana Park
William Patzold
John & Judith Peakes
James W. Pearson, Jr.

Penn City Elevator
Linda Penza & Angelo Penza
Dr. Maria Perez-Navarro
Doug & Kathy Perham
Mr. & Mrs. Donald Peterson
Valerie Phillips
Mr. & Mrs. Herbert Pincus
Mr. & Mrs. Steven B. Pinsky
Beatrice S. Pitcairn
Patricia H. Polinsky
Pat Scheerer
Dorothy Haas Prais
Robert & Anne Pritchard
Mr. & Mrs. Thaddeus
Raczkowski
Dr. & Mrs. Christopher
Rapuano
Adrienne & Thomas Rehiel
Mr. & Mrs. Stuart Reichman
Ed & Joanne Rempfer
Rosemary Richards
Dr. & Mrs. Melvyn Richter
Bettye C. Ricks
Kevin A. Roach

Ann Robinson
Drs. Brad & Elizabeth Robinson
Audra & Marie Robinson
Reverend Thomas J. Rooney
Mrs. Lorraine Rosenberg
Ron & Eileen Rothrock
Mr. & Mrs. James Roynan
Dr. & Mrs. Walter Rubin
Hon. & Mrs. William Rufe, III
Mary & Paul Rutter
Nancy Sager
Mrs. Margaret E. Schlagle
Carol & Gregory Scott
Evelyn Scudder
Michael Seiden & Paula Ryan
Mr. & Mrs. Carl Sensenig
Mr. & Mrs. David Service
William T. Shearer
Gail & Larry Simon
Sandra & Barry Singer
Nancy & Michael J. Skiba
Frank & Karen Smith
Bonnie & Steven Snyder
Jon & Jean Snyder

Erma Cacci Sobol
Mr. & Mrs. Douglas H. Springer
Marge & Ty Steinberg
Jean & Sara Steinmetz
Mr. & Mrs. Domenic Stellato
Joan Stevenson
Joyce & Edward Stoeber
Mr. & Mrs. Richard Stoops
Ruth & Norman Stuessy
Mark & Jeanette Suprenant
Stuart & Lorraine Suter
Mr. & Mrs. Timothy Sweeney
J.A. Swoyer, Inc.
Dan & Jane Taylor
Wayne Tobolski
Whitney Toews
Susan & Robert Tribit
Nicholas & Judith Troiano
Gloria J. Tucker
John & Barb Ungerman
Anne Van Meter
The Vandeerlins
Mr. & Mrs. Tom VonHoltum
Mr. & Mrs. Michael B. Walsh

Marc & Greta Washington
Mrs. & Mr. Dorothy and
Leonard Wasserman
Joseph & Eileen Wawrzynek
Fran & Marvin Weinberger
Mr. & Mrs. Edward Welsh
Mr. & Mrs. Kenneth R. Werner
Alvin L. White
Russ & Carol Whitman
Ms. Ann J. Williams
Caron & Elizabeth Williams
Eugene Winner
Delores & Pat Winner
Mr. Robert Wolak
Marian M. Wolfert
Faith & David Wolford
Luz Perez-Rocha, M.D. &
Gerald Yeich
Mr. & Mrs. Leroy W. Young
Sandra Zarodnansky

Walnut Street Theatre graciously acknowledges additional supporters online at WalnutStreetTheatre.org.