



WALNUT STREET THEATRE



Fairy Tale Monster Mystery

BY: Tom Quinn and Bill Van Horn

TOURING OUTREACH COMPANY

STUDY GUIDE

SHOW SYNOPSIS

Someone is stealing the monsters from fairy tales! The dragons, ogres, witches, and ghouls are missing! Catastrophe! How can heroes be heroes without villains? Where is the drama? Where is the conflict? Where is the story? This brand new adventure story follows two young children as they solve the mystery, discover the joy of reading, and strike a blow against bullies everywhere!

Answer the following questions as a class:

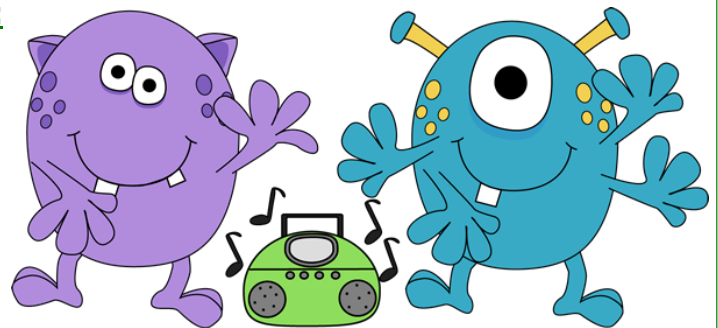
Characters: Who is in the story?

Setting/Place: Where does the story take place?

Time: When does the story happen?

Problem: What is it that one or more characters wants to do or wants to happen by the end of the story?

Events: What happens in the story that helps the characters solve the problem?



DISCUSSION QUESTIONS

BEFORE THE SHOW

1. What do you think the show will be about?
2. Who is your favorite monster or evil villain?
3. What is your favorite book to read?
4. Have you ever been to a LIVE play before?

AFTER THE SHOW

1. Would YOU have put the cheese head on your head? Why?
2. If you could have any special powers, what would you want to be able to do?
3. Who saved the day and all of your imaginations?
4. Do you have a library that you like to go to?

THEATRE 101

PLAYWRIGHT The playwright writes the script.

DIRECTOR The director is in charge of the production. They lead the actors, designers, and production crew to put the show on its feet.

COSTUME What the actors wear during the show.

SCENERY Everything on stage (*except props*) used to represent the setting, or where the story is taking place.

PROPS All physical items on stage with the exception of the scenery. This includes lamps, chairs, pens, paper, books and more!

LIGHTS Stage lights illuminate the actors so that they look their best. The colors used, focus of the light, and amount of lighting can really set the mood and environment of a scene.

SOUND Everything that you hear during a performance that does not come from the actors.

ACTORS The actors are the people that perform the show on-stage.

AUDIENCE The lucky people that get to watch the show. New to being an audience member? Follow these rules and you will be a natural!

Ever wondered how to put on a play?

There are many different elements that go into putting what's written on the page up on its feet. Please review the following terms with your students:

AUDIENCE RULES

- ◆ Unlike a movie, the actors are performing in front of you. They can see everything that you do. Talking, sleeping, poking your neighbor, or making noise during the performance distracts the actors and others around you.
- ◆ Don't bring electronics to the performance. The use of cell phones, cameras, computers, tablets, and video game devices are **not allowed**.
- ◆ Use your better judgment on when to laugh, clap, and/or cry during the performance. But don't forget to clap at the end of the show!
- ◆ Stay in your seat during the performance.
 - ◆ Make sure you go to the bathroom before the show starts.



CLASS ACTIVITY: Who is your hero?

- As a class, discuss the meaning of the word *hero*, and the importance of a hero and a villain in a story.
- Tell students to think about people who are their heroes -- family members, friends, and famous people, then fill out the table below!

1. A person who is my hero is

2. This person is my hero because

3. Two words that describe this person are

and

4. One thing the person does that I admire is

5. One way I can be more like my hero is by

Are you a hero? Write a few sentences telling about something that you did that you think was heroic.

Handwriting practice area with a vertical red margin line on the left and horizontal blue lines for writing.





Draw It:

If you could create your own monster, what would it look like?

Draw your DREAM monster below!



Act it out!

Below is a scene from *The Fairy Tale Monster Mystery*. Split up into groups and act out the scenes in your own way! Remember to act as evil as possible if you are Dinwad Tusque!

Minerva: So how does putting a piece of cheese on your head make dreams and thoughts better?

Dinwad: By making them nicer.

Olga: Nicer?

Dinwad: Yes, my dream enhancing cheesehead takes away all the bad things. All meanness and unpleasant thoughts. All conflict. Just goes away when you wear it. Would you like to try it?

Olga: No way.

Minerva: I am not interested in getting cheese in my hair.

Dinwad: Where is your sense of adventure? Try it.

Minerva: Okay. Why not?

Olga: You are seriously just going to put that thing on your head?

Minerva: Yes.

Olga: What about stranger danger? And how

about not just doing what some random guy with a weird English accent tells you to do?

Minerva: If I didn't our story would never move along and these kids need to eventually get back to class.

Olga: Okay, good point.

Dinwad: Wonderful! I am sure nothing will go wrong! Let me just put it on the correct setting and here you go.

Dinwad puts the cheesehead on Minerva. She immediately goes into a trance like state and begins to repeat the word "Nice" over and over.

Minerva: Nice, nice, nice, nice, nice.

Olga: This is creepy.

Dinwad: See how happy she looks!

Minerva: Nice, nice, nice...

Olga: She is creeping me out.

CLASS ACTIVITY

Match the characters with their descriptions!

_____ Mrs. Bookenstein

_____ Dragon

_____ Olga

_____ Minerva

_____ Dinwad Tusque

_____ Troll

_____ Buddy

_____ Witch

_____ Freddy

A. A student who loves to read!

B. A fairytale creature who is scared and sad.

C. An evil Villain who invented a cheesehead.

D. An old guy who narrates the story.

E. She saves the day!

F. He wants to find a cheesesteak.

G. She has a crush on Freddy.

H. She wants to watch *The Wizard of Oz*

I. He loves to play video games.



WALNUT STREET THEATRE

BIOGRAPHY



Walnut Street Theatre has the unique distinction of being the oldest, continuously operating theatre in the English-speaking world, having served Philadelphia audiences for over 200 years!

Today, under the direction of Producing Artistic Director Bernard Havard, Walnut Street Theatre is in its 35th season as a self-producing, non-profit theatre company. Walnut Street Theatre continues to entertain and enlighten diverse audiences with high quality theatrical programming. With more than 50,000 subscribers, the Walnut is also the most subscribed theatre company in the world!

Each season, Walnut Street Theatre holds a nation-wide search to recruit accomplished young professionals for Acting Apprenticeships. These actors form our Touring Outreach Company. Nearly 500 candidates are considered each year for these four positions. Last season,

172,000 children and adults were impacted by the Walnut's Education Programs: including our theatre school with classes for kids and adults, Camp Walnut, Our Touring Outreach Program to local schools and our artist in residency programs.

WALNUT STREET THEATRE EDUCATION STAFF

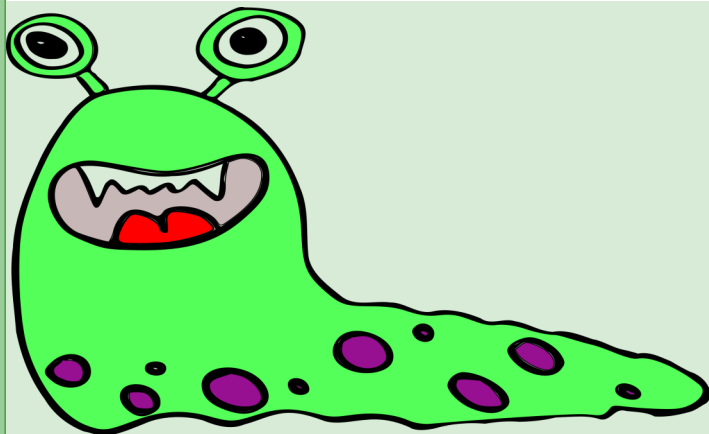
DIRECTOR OF EDUCATION
ASSISTANT DIRECTOR OF EDUCATION
EDUCATION PROGRAMS ASSOCIATE
EDUCATION PRODUCTION ASSOCIATE
RESIDENT TEACHING ARTIST
EDUCATION APPRENTICE
ACTING APPRENTICES

Thomas Quinn
Ashley Kerns
Amanda Pasquini
Stephanie Sintef
Jasmine Hammond
Aine Lafferty
Hallie Hargus
Sarah Owens
Daniel Wisniewski
Ladarreun Taylor

ADDITIONAL RESOURCES

WEB

- **Educational Drama Activities**
<http://plays.about.com/od/activities/>
- **Walnut Street Theatre Touring Outreach Company**
<http://walnutstreettheatre.org/education/touring.php>



Fairy Tale Monster Mystery CREATIVE TEAM

PLAYWRIGHT

Bill Van Horn

Tom Quinn

DIRECTOR

Tom Quinn

THANK YOU

The Walnut Street Theatre Education Department gratefully acknowledges the support from the following:
Anonymous (2) * Aqua America * Louis N. Cassett Foundation * Connelly Foundation * The Peter & Audrey Denton Fund * Dow Chemical Company * William Goldman Foundation * Hamilton Family Foundation * Hassel Foundation * Haverford Trust Company * Hellendall Family Foundation * Herman Goldner Company * Syde Hurdus Foundation * William Penn Foundation * Mutual Fire Foundation * Lincoln Financial Group Foundation * National Corporate Theatre Fund * PECO * TD Charitable Foundation * Theatre Forward * United Way of Greater Philadelphia and Southern New Jersey * Vulcan Spring & Mfg. Co.

Walnut Street Theatre Educational Opportunities!

2016-2017
SEASON

WALNUT STREET THEATRE TOURING OUTREACH

Bring a show to your school!

Bully Buster Rides Again

Hurry Up! Be Perfect!

Fairy Tale Monster Mystery

Martin and Malcolm

Open a dialogue with students about issues that affect them!

Walnut Street Theatre for Kids!

Bring your kids to Walnut Street Theatre!

Charles Dickens' *A Christmas Carol*

Honk! JR

Stinky Kids

Flat Stanley

Ivy and Bean

Tickets just \$10-\$16!

Read the books, then see the stories LIVE!

Call 215-574-3550, ext. 504



The Theatre School at WALNUT STREET THEATRE

Classes for kids, students, and adults!

For students from 5 to 105! Great for networking, providing a creative outlet, and professional training.

Find your inner star at the Walnut!

Call 215-574-3550, ext. 510

RESIDENCY PROGRAM

Let us design a dramatic and educational program for your school!

We support teacher's objectives with personalized programs that meet your needs and budget.

Call 215-574-3550, ext. 511

When we PLAY, Learning Happens!