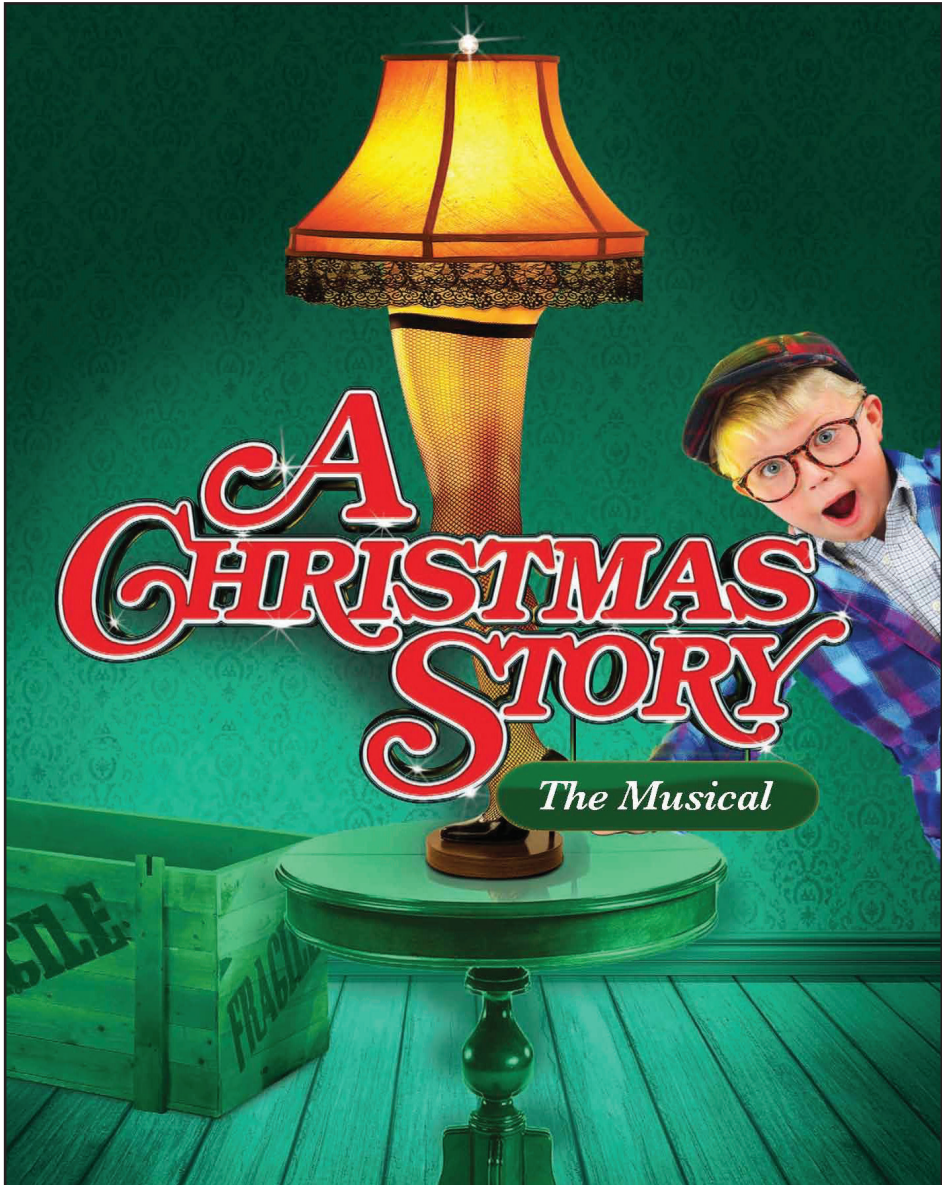


PLAYBILL®



WALNUT STREET THEATRE
PHILADELPHIA, PENNSYLVANIA



PLAYBILL.COM



AMERICA'S OLDEST THEATRE — PHILADELPHIA'S MOST POPULAR THEATRE COMPANY
WALNUT STREET THEATRE
825 WALNUT STREET • PHILADELPHIA PA 19107

Dear Theatregoer,

Welcome to an exciting holiday season at the Walnut! The level of activity in this theatre always amazes me during the most wonderful time of the year. The successes we have celebrated over the past 33 years as a not-for-profit producing theatre company would not be possible without the support of loyal theatregoers like you. We would like to say thank you. You help to make the Walnut the most popular theatre company in Philadelphia, and the most subscribed theatre company in the world!

For me, the holidays are always a warm reminder of the importance of traditions honored with family and friends. In my home, as in many of your homes, watching *A Christmas Story* is part of our annual holiday celebration. The charming story of a child with a Christmas dream is one that many of us can relate to. Tonight on our stage, you'll see many of our Walnut family who have come home for the holidays, as well as faces of new friends. I'm thrilled to share this hilarious, heart-warming musical with you.



Photo: Mark Garvin

Upstairs in our Independence Studio on 3, we have the triumphant story of Karola Siegel, *Becoming Dr. Ruth*. This is the fascinating life story of a woman who fled from the Nazis in Kindertransport, joined the Haganah in Jerusalem as a scout and sniper, then traveled to the States and became America's most famous sex therapist. Our intimate space is the perfect setting for this gripping tale. You don't want to miss it.

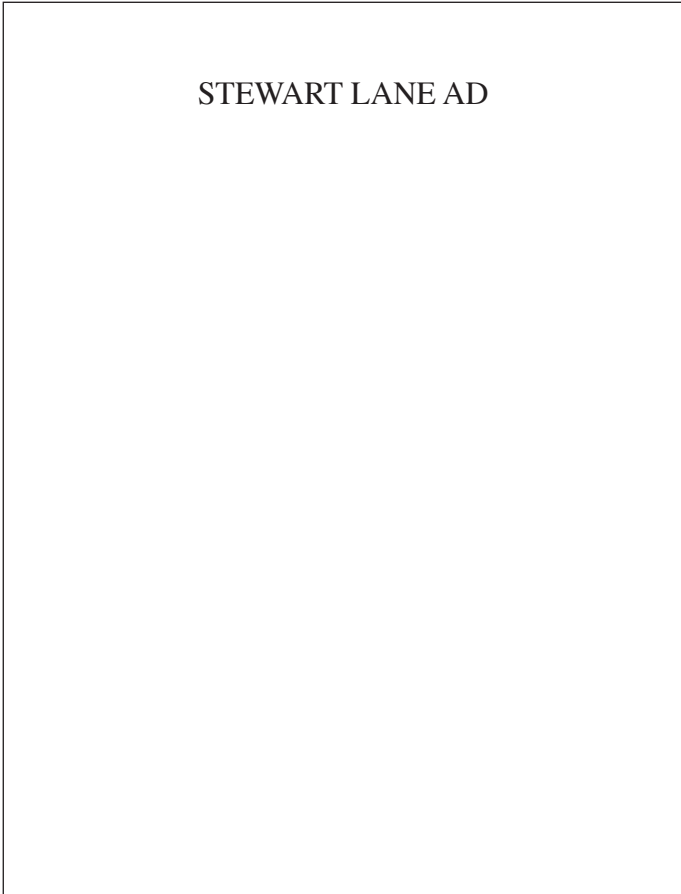
We are proud that our WST for Kids' production of Charles Dickens' *A Christmas Carol* remains a must-see Philadelphia holiday tradition. Ebenezer Scrooge and Tiny Tim will fill the hearts of audiences with joy on this very stage. I hope you and your littlest friends will join us for Dickens' classic tale!

In addition to our exciting productions, our Theatre School classes and Outreach programs continue to make a positive impact in the region, reaching more than 180,000 children annually. None of this would be possible without you.

Tonight, I invite you to take a break from the hustle and bustle and enjoy *A Christmas Story, the Musical*. My family and I wish you all the very best this holiday season.

Sincerely,

Bernard Havard, Producing Artistic Director



STEWART LANE AD



PLAYBILLVAULT.COM





AMERICA'S OLDEST THEATRE – PHILADELPHIA'S MOST POPULAR THEATRE COMPANY
WALNUT STREET THEATRE
825 WALNUT STREET • PHILADELPHIA PA 19107

BERNARD HAVARD

Producing Artistic Director

November 10, 2015 – January 10, 2016

A CHRISTMAS STORY, THE MUSICAL

Book by JOSEPH ROBINETTE

Music and lyrics by JUSTIN PAUL and BENJ PASEK

Based on the motion picture *A Christmas Story*, © Turner Entertainment Co.,
distributed by Warner Brothers, written by Jean Shepherd, Leigh Brown and Bob Clark,
and on the book *In God We Trust: All Others Pay Cash* by Jean Shepherd

Scenic Design
J BRANSON

Costume Design
MARY FOLINO

Lighting Design
PAUL BLACK

Sound Design
ZACH WILLIAMSON

Animal Trainer
WILLIAM BERLONI

Production Manager
JOEL MARKUS

Stage Managers
LORI AGHAZARIAN
DEBI MARCUCCI

Music and Vocal Direction by
DOUGLASS G. LUTZ

Choreographed by
LINDA GOODRICH

Directed by
JAMES ROCCO

Sponsored by



MARK D. SYLVESTER

Managing Director

Director of
Education
THOMAS P. QUINN

Director of
Institutional Advancement
REBEKAH SASSI

Director of Marketing
and Public Relations
RALPH WEEKS

6 PLAYBILL

THE CAST

(in order of appearance)

Jean Shepherd BILL VAN HORN*
Ralphie Parker..... CRAIG MULHERN JR †, LIAM KEENAN ‡
Mother..... LYN PHILISTINE*
Randy Parker..... COLLIN JEFFERY †, TIMMY WOODWARD ‡
The Old Man.....CHRISTOPHER SUTTON*
The Bumpus Hounds.....OLIVER & SAMMY
Schwartz..... JACOB WILNER †, MARCO PORRAS ‡
Flick JOSIAH JACOBY †, JAKOB KLEEMAN ‡
Scut Farkus..... ANTHONY FLAMMINIO †, ZACH ANDERSON ‡
Grover Dill..... AIDAN BRITO †, LUKE PLUNKETT ‡
Mrs. Schwartz MELISSA JOY HART*
Miss Shields..... ELLIE MOONEY*
Santa.....FRAN PRISCO*
Waiter.....CHRISTOPHER SHIN*

ENSEMBLE

DON DANIELS*, ANDREW ECKERT*, JENNIE EISENHOWER*, BILLY D. HART*,
MELISSA JOY HART*, JESSE JONES*, BONNIE KELLY*, SCOTT LANGDON*,
JESSICA MARY MURPHY*, NICHALAS L. PARKER, JENNY PIERSOL*,
FRAN PRISCO*, KERRI ROSE*, NICHOLAS F. SAVERINE*, CHRISTOPHER SHIN*,
ALANNA SMITH‡, ROCHELLE SMITH*, ADRIENNE S. WELLS*

CHILDREN'S ENSEMBLE

Weekday Team †

LEXI GWYNN, JILLIAN HENDERSON, RACHEL McVEY, PORTIA MURPHY,
NOAH SCHER, GABRIELLE SCHOENER, NICK WILLIAMS

Weekend Team ‡

JORDAN BUDNEY, CAMERON FLURRY, CAMBRIA KLEIN, JACK PRISCO,
MATTHEW SAYLOR, ALANNA STEIN, JULIANNA ZANNIKOS

UNDERSTUDIES

BRYAN BLACK (Ensemble), JENNIE EISENHOWER* (Mother), CAMERON FLURRY
(Girl Ensemble), ELIZABETH FRAWLEY (Ensemble), JOSIAH JACOBY (Ralphie), SCOTT
LANGDON* (Old Man/Jean Shepherd), NICOLE LEWIN MARIASH (Ensemble), JENNY
PIERSOL* (Miss Shields), LUKE PLUNKETT (Ralphie), JACK PRISCO (Randy), MATTHEW
SAYLOR (Scut Farkus), NOAH SCHER (Flick), GABRIELLE SCHOENER (Girl Ensemble),
KEVIN TONIAZZO-NAUGHTON (Ensemble), NICK WILLIAMS (Grover Dill)

EXTRAS

BRYAN BLACK, ELIZABETH FRAWLEY,
NICOLE LEWIN MARIASH, KEVIN TONIAZZO-NAUGHTON

*Denotes membership in Actors' Equity Association, the union of professional actors
and stage managers in the United States.

†: Performs all Mon.-Fri. eve., plus Wed. mats. 12/23 & 12/30, and Fri. mat. 11/27

‡: Performs all Thurs. mats., plus all shows Sat. and Sun.

Produced by special arrangement with DRAMATIC PUBLISHING, Woodstock, Illinois.

The videotaping or other video or audio recording of this production is strictly prohibited.

PLAYBILLVAULT.COM

WALNUT STREET THEATRE 7



SCENES AND MUSICAL NUMBERS

ACT TWO

Entr'Acte..... Orchestra

Scene 1: The Schoolyard & Classroom

“Sticky Situation”..... Ralphie, Flick, Schwartz, Kids, Miss Shields,
Nurse, Flick’s Mom, Fireman, Policeman and Doctor

Scene 2: Fantasy 1930’s Speakeasy

“You’ll Shoot Your Eye Out!”.....Miss Shields and Ensemble

Scene 3: Immediately Following, A Path From School

Scene 4: A Few Minutes Later, The Parker House

“Just Like That”..... Mother
“Red Ryder Carbine Action BB Gun” (Reprise)..... Ralphie

Scene 5: Christmas Eve, Santa’s Station at Higbee’s

“At Higbee’s”.....Elves
“Up on Santa’s Lap”.....Santa, Elves, Ralphie, Randy and Kids

Scene 6: Christmas Eve, The Parker House

“Before The Old Man Comes Home”.....Ralphie and Randy



Scene 7: A Half Hour or So Later, The Boy’s Bedroom

“Somewhere Hovering Over Indiana”.....Ralphie, Randy and Kids



Scene 8: Christmas Morning, The Parker House & A Chinese Restaurant / The Town

“Christmas Morning”..... Ralphie
“Ralphie to the Rescue” (Reprise).....Ralphie and Ensemble
“A Christmas Story”..... The Parkers and Full Company

THE ORCHESTRA

Conductor/Keyboard 1: Douglass G. Lutz

Associate Conductor/Keyboard 2: John Daniels, Jr.

Reed 1 (Flute, Piccolo, Clarinet, Soprano Sax, Alto Sax): Frank Mazzeo

Reed 2 (Flute, Clarinet, Alto Sax, Tenor Sax): Bob Quaile

Reed 3 (Clarinet, Bass Clarinet, Tenor Sax): John Welte

Lead Trumpet (Trumpet, Cornet, Flugelhorn): Dennis Wasko

Trumpet 2 (Trumpet, Cornet, Flugelhorn): Jim Ward

French Horn: Lyndsie Wilson

Trombone (Tenor Trombone, Euphonium): Bob Gale

Bass (Contrabass): Fred Weiss

Drums and Percussion: Joe Nero, Sr.





Don Daniels Andrew Eckert Jennie Eisenhower Billy D. Hart Collin Jeffery Melissa Joy Hart



Jesse Jones Liam Keenan Bonnie Kelly Scott Langdon Ellie Mooney Craig Mulhern Jr



Jessica Mary Murphy Nicholas L. Parker Lyn Philistine Jenny Piersol Fran Prisco Kerri Rose



Nicholas F. Saverine Christopher Shin Alanna Smith Rochelle Smith Christopher Sutton Bill Van Horn



Adrienne Wells Timmy Woodward Oliver Sammy

PLAYBILLVAULT.COM

MERCEDES

PLAYBILLVAULT.COM

WHO'S WHO IN THE CAST

DON DANIELS (Ensemble) Stoked to be making his WST debut! *Young Frankenstein* 1st national (Ziggy, Igor u/s); *Bright Lights, Big City* (Prince); *She Loves Me, Of Thee I Sing* (Paper Mill); *Gentlemen Prefer Blondes* (Westchester). Thanks to The Val Nunnenkamp Team, Yoga Voorhees and my family / angels... Sara, Marley, Mia & Piper.

ANDREW ECKERT (Ensemble/Dance Captain) *Mary Poppins* (WST/National Tour), *West Side Story* (Riverside Theatre), *The Little Mermaid* (ASF) and *Hello, Dolly!* (MUNY). Thanks to Linda, James, Brian, and the WST family! Endless love and thanks to my amazing family, Igor, and Philly roommate Anne! BA Wagner College. AEA member. andrew-eckert.com.

JENNIE EISENHOWER (Ensemble) Walnut highlights: *Forbidden Broadway* (Barrymore: Leading Actress), *Arsenic and Old Lace*, *Mousetrap*, *Fallen Angels*, *Criminal Hearts*, *Ideal Husband*. Philly: Arden (*Parade*, *Passion*), Bristol (*Little Women*), PTC, Media, Theatre Horizon, Wilma. Upcoming: directing *1776* at Media Theatre and starring in *Kiss Me, Kate* at Act 2. For Chloe. jennie-eisenhower.com.

BILLY D. HART (Ensemble) Upcoming: *Sister Act*. WST: *High Society*, *Memphis*, *9 to 5*. Nat'l Tours: *Elf*. Favorites: *Spelling Bee* (Leaf), *La Cage...* (Jean-Michel), *Crazy For You* (Bobby Child), *Joseph...* (Reuben), *Guys and Dolls* (Benny Southstreet), *Full Monty* (Ethan). BFA, NYU Tisch. Thanks to the Walnut, cast, creative team and his family. Proud member of AEA. BillyDHart.com

COLLIN JEFFERY (Randy Parker) Excited for WST debut! Tour: *Camelot* (Tom of Warwick); Performances: *Cinderella*, *Into the Woods, Jr.*, *Scrooge*, *Oliver!* and more. Special thanks to Delaware Children's Theatre.

MELISSA JOY HART (Mrs. Schwartz/Ensemble) Grateful to be back! Walnut credits include: *Amadeus*, *Sound of Music*, *Phantom* (Mainstage); *Jacques Brel*, *Rise and Fall of Little Voice* and *Sophie Tucker* (Studio 3). Regional: Milwaukee Rep, Delaware Theatre Company, Arden Theatre, Fulton Theatre, Theatre Horizon. Thanks to Jamie, Bernard, Mark, Brian and the entire WST family! Love to Matty.

JESSE JONES (Ensemble) is honored to return to the Walnut Street Theatre. Some performance credits include: *Beauty and the Beast*, *All Shook Up*, *Memphis*, *The Wiz*, *Aida*, Putty Dance Project, Bermuda Dance Company & PBS Dance Masters. He also has performed on several Cruise lines and Disney Parks around the world.

LIAM KEENAN (Ralphie Parker) Thrilled to make WST debut! Roles include *Addams Family* (Pugsley, Fulton Theater), *Secret Garden* (Colin), *Oliver* (Oliver). Thanks CPM, coaches and love to family.

BONNIE KELLY (Ensemble) Walnut debut! National Tours: Disney's *Beauty and the Beast* (Silly Girl, Asst. Dance Captain, Babette U/S), *A Chorus Line* (Bebe). Favorite Credits: *Sweet Charity* (Elaine), *Hair* (Diane) and *Singin' in the Rain* (Olga). BFA Musical Theater Montclair State University. Cherry Hill, NJ native. Love to Mom and Family! Bonnie-Kelly.com

SCOTT LANGDON (Ensemble/Old Man u/s/Jean Shepherd u/s) Grateful to return! Walnut: *I Love a Piano*; *How To Succeed* (Milt Gatch); *Music Man* (Charlie Cowell); *Love Story* (Dr. Ackerman); *The Sound of Music* (Admiral). Regional highlights: *The Diary of Anne Frank* (Van Daan); *A Christmas Carol* (one-man adaptation); *Spamalot* (Arthur); *1776* (John Adams); *The Crucible* (John Proctor). Love to M, M and C.

ELLIE MOONEY (Miss Shields) Recent WST: *Rise and Fall of Little Voice* (Little Voice), *Mary Poppins* (Mrs. Corry), *Amadeus* (Constanze), National highlights: *The Spitfire Grill* (Shelby) at Fulton Theatre, *Drowsy Chaperone* (Kitty) at Flat Rock Playhouse and the National Tour of *Chitty Chitty Bang Bang* (Violet). Up Next at WST: *Harvey* (Myrtle Mae) elliemooney.com

CRAIG MULHERN JR (Ralphie Parker) Favorite roles: Dodger, *Oliver!*; Little Jake, *Annie Get Your Gun*; Doody, *Grease*. Thrilled for his WST debut and thanks his friends/family for their support! CraigMulhernJr.com.

JESSICA MARY MURPHY (Ensemble) is thrilled to make her WST debut! Recent performances include *La Traviata* and *Don Carlo* with Opera Philadelphia. Favorite Roles: Sister Margareta/Frau Schmidt (*The Sound of Music*; 2nd

WHO'S WHO

Nat'l & Asia Tours), Kate Murphey (*Titanic*) and Cunegonde (*Candide*). MM Westminster Choir College; BFA Musical Theatre-University of Michigan. Love to James and Poulenc!

NICHALAS L. PARKER (Ensemble) Happy to return! Recent credits: *Memphis* (WST); *The Life, Passing Strange* (11th Hour Theatre); *Lost in the Meadow* (PearlDamour). Graduate of The University of the Arts, and former WST Acting Apprentice. He would like to thank Mom, Dad, Jasmine, and all his Philadelphia Family for the love and support.

LYN PHILISTINE (Mother) Broadway/Tours: *Monty Python's Spamalot* (Lady of the Lake), *Gypsy*, *Cinderella*, *Disney's On the Record*. NYC/Off-Broadway: *A Bronx Tale* (Rosina) directed by Robert De Niro and Jerry Zaks, *My Secret Garden*, *Golf*, *Oliver!* WST: *The Buddy Holly Story*; *I Love You, You're Perfect, Now Change*. Lyn was recently a Principal Soloist for The Philadelphia Orchestra in Bernstein's *Mass*. BFA from CCM. All my love to Christopher and our little Dylan...

JENNY PIERSOL (Ensemble/Miss Shields u/s/Kids Dance Captain) is thrilled to return to WST! Previous: *9 to 5*, *Mary Poppins*, *High Society*. Other credits: *42nd Street* (Peggy Sawyer), *Anything Goes* (Hope Harcourt), and

Lincoln Center's second national tour of *South Pacific* (Nellie u/s, perf.) Heartfelt thanks to Bernard, Brian, and our creative team. Phil 4:13. Love to my family. jennypiersol.com

FRAN PRISCO (Santa/Ensemble) Always thrilled to spend the Holidays at the Walnut! 20+ Walnut shows. Next up *Harvey* and *Sister Act*. Keep an eye out for The Summer Club, we're taking our Big Band show from downshore to Philly in 2016! Beyond excited to share the stage for the first time with his nephew Jack!

KERRI ROSE (Ensemble) This is Kerri's 14th show at the Walnut! Previous shows include *Mary Poppins*, *Memphis*, *White Christmas* and *42nd Street*. TV/Film: *Vinyl* (dir: Martin Scorsese), *America's Got Talent*, *The Knick*. BFA: University of the Arts. Thanks to the Walnut and Bloc! Happy holidays everyone!

NICHOLAS F. SAVERINE (Ensemble) thrilled to be back! Seen here in *Annie*, *Annie Warbucks*, *State Fair*, *Les Misérables* and *The Music Man*. Broadway: *Les Misérables*, *The Phantom of the Opera*. Tours: *Les Misérables*, *Joseph...Dreamcoat*, *Caroline or Change*. Recently created the role of Geppetto in Disney's *My Son Pinocchio*. Adjunct Professor at Rowan University. Thank you Bernard, Jaimie, and Linda.



LEADERSHIP & PASSION & PARTICIPATION

For 207 years, Walnut Street Theatre has been part of the fabric of Philadelphia. The institution today is at the pinnacle of its success, drawing an audience of more than 350,000 patrons annually. In addition, our educational programs impact 185,000 children, parents and teachers.

As a non-profit organization, the Walnut relies on its Board of Trustees to provide critical connections, resources, and expertise. The Board's Governance Committee is seeking trustee candidates with a passion for the Walnut's mission, vision, values and strategic aims.

To learn more about the rewards and requirements of serving on the Board of Trustees of America's Oldest Theatre, please email our Director of Institutional Advancement Rebekah Sassi at sassi@WalnutStreetTheatre.org.

PLAYBILLVAULT.COM

WALNUT STREET THEATRE 13

WHO'S WHO

CHRISTOPHER SHIN (Waiter/Ensemble) is thrilled to be back at the Walnut! WST: *Mary Poppins*, *The Producers*. Broadway: *Mary Poppins*. Regional: Sacramento Music Circus, Kansas City Starlight, Gulfshore Playhouse, Arkansas Rep, Ogunquit Playhouse, Westport Country Playhouse, North Shore Music Theatre. BFA- NYU/Tisch: CAP21. Proud member of AEA. Proud uncle to Micah and Owen. chrisshin.com

ALANNA SMITH (Ensemble) is excited to join the cast of *A Christmas Story*. Recently seen on the WST stage as Nancy in *Fancy Nancy*, and Shulie in *Schoolhouse Rock, Live!*. Regional credits include *Gypsy* (June), *James and the Giant Peach* (Mrs. Trotter), *Little Women* (Meg). Ithaca College: BFA Musical Theatre. alanna-smith.com.

ROCHELLE SMITH (Ensemble/Dog Handler) is thrilled to make her WST debut with her furry roommates! Performance credits: *Legally Blonde*, *A Little Night Music*, *Peter Pan*. Handling credits: *The Wizard of Oz*, *The Wiz*, *Legally Blonde*. Thanks to Bill Berloni for another opportunity to share the stage with his dogs!

CHRISTOPHER SUTTON (The Old Man) This is Christopher's 10th wonderful role with WST. NYC/Tours: *Monty Python's Spamalot* (Outstanding Actor Award); *Flight of the Lawnchair Man* (Outstanding Actor Award); *Antony and Cleopatra* (Antony); *Ancient History*; *I Love You, You're Perfect*; *The It Girl*; *Lola-Lola*; *Four Messages*; *Valueville*; *Hell Is for Real*; *Henry VI*. Recipient of the Barrymore Award (*The Buddy Holly Story*), and the Sudler National Prize in the Arts. ChristopherSutton.net. All my love to Lynn and our lil' fella Dylan...

BILL VAN HORN (Jean Shepherd) Recently at WST: *Mary Poppins*, *Driving Miss Daisy*, *Elf*, *Proof*, *The Prince*, *Fiddler on the Roof*, directed *The Glass Menagerie*, and created and starred in *O Captain, My Captain: Whitman's Lincoln*. Bill is a member of the acting company and associate artistic director at Theatre at Monmouth in Maine. Proud member of Actors' Equity.

ADRIENNE WELLS (Ensemble) is excited to perform in her third production at the Walnut! Credits: *High Society*, *Memphis*, Shakespeare's *Macbeth*, and *Spring Awakening*. Graduate of Temple University with a BA in Theater.

GERMANTOWN SCHOOL

WHO'S WHO

Thanks to the Walnut, cast and crew. Love to my family and friends.

TIMMY WOODWARD (Randy Parker) Walnut debut! Seen recently in *Phantom* (young Erik) at the Broadway Theatre in Pitman; *Gypsy* (Newsboy) and *Les Misérables* (Gavroche) at the Media Theatre.

OLIVER & SAMMY (The Bumpus Hounds) live with guardian and trainer William Berloni at their home in Connecticut. Mr. Berloni trained the bloodhounds for the Broadway production of *A Christmas Story*. We believe in nontraditional casting and believe every dog can be a Bumpus Hound. Oliver was rescued from Paws To Love Adoption Group of New Jersey in 2007 and has been playing "Sandy" in *Annie* in regional theaters all over America. Sammy was a pup needing a home and is making his theatrical debut. We hope you enjoy their version of this classic tail.

BENJ PASEK and **JUSTIN PAUL** (Music & Lyrics) In addition to their Tony nomination for Best Original Score Written for the Theatre for *A Christmas Story, The Musical*, the show also received Tony nominations for Best Book of a Musical and Best Musical. Among other awards, it was named one of the Top 10 Plays and Musicals of 2012 by TIME magazine, shared recognition as the Best Musical of 2012 in USA TODAY, received a Drama Desk Award nomination for Outstanding Musical and an Outer Critics Circle nomination for Outstanding New Broadway Musical. Pasek and Paul are also the composers of the off-Broadway musical *Dogfight* (Director Joe Mantello, Choreographer Christopher Gattelli). The show was the winner of the Lucille Lortel Outstanding Musical Award. As television songwriters, their original songs were featured on season two of NBC's *Smash* and rose to the top 25 on the iTunes Pop Charts. The duo made their debut as songwriters with their widely acclaimed musical *Edges*, which is licensed by Music Theatre International and has had hundreds of productions worldwide. Other theatrical works include *James and the Giant Peach* (Kennedy Center and Goodspeed Musicals, Director Graciela Daniele and Choreographer Pilobolus), *Duck for President* and *If You Give a Pig a Pancake* (Theatreworks USA). Their musical *Dear Evan Hansen*, with book by Steven Levenson,

SHOPS AT LIBERTY

FRIENDS SELECT

10,000 VILLAGES

WHO'S WHO

premiered this past summer at Washington D.C.'s Arena Stage. Their musical work for TV can be seen on *Sesame Street* and *Johnny and the Sprites*. Pasek and Paul are the recipients of the 2011 Richard Rodgers Award for Musical Theatre from the American Academy of Arts and Letters, a 2011 Sundance Institute Fellowship, the 2011 ASCAP Foundation's Richard Rodgers New Horizons Award, the 2011 ASCAP Songwriters Fellowship Award and a 2007-2008 fellowship from The Dramatists Guild. They are the youngest recipients of the Jonathan Larson Grant (2007) in the foundation's history. They have participated in ASCAP's Johnny Mercer Foundation Songwriters Project and were named one of The Dramatist magazine's "50 to Watch" in contemporary theatre. As performers, Pasek and Paul have traveled throughout North America, Europe and Australia performing concerts of their work. They also teach master classes in songwriting and theatre performance at universities around the world. They are proud graduates of the University of Michigan with BFAs in the musical theatre program. pasekandpaul.com

JOSEPH ROBINETTE (Book) is the author or co-author of 55 published plays and musicals. His works have been produced at the Lunt-Fontanne Theatre, The Theater at Madison Square Garden and Lincoln Center for the Performing Arts in New York City, the 5th Avenue Theatre in Seattle, the Goodman Theatre in Chicago, the BBC in Britain, in all 50 states and in 21 foreign countries. Twelve of his works have been translated into foreign languages, and another five have been anthologized. Robinette collaborated with E.B. White on the authorized stage version of *Charlotte's Web*, and he wrote the musical version with Charles Strouse. He is the recipient of the American Alliance for Theatre and Education's Distinguished Play Award for *Sarah, Plain and Tall* and the Children's Theatre Foundation of America medallion for his "body of dramatic works for family audiences in the United States and beyond."

JEAN SHEPHERD (Originating Author) was a writer, humorist, satirist, actor, radio raconteur, and television and film personality. A master storyteller, he took bits and pieces from his youth in Hammond, Indiana, his adventures in the Army Signal Corps and stories of the obscure and infamous were all fertile sources for his tales. His radio career began in Cincin-

WHO'S WHO

nati in 1950, before moving to WOR in New York. Shepherd performed on Broadway, did baseball broadcasts for the Armed Forces, wrote for numerous magazines, and wrote and produced many television and film works. His most popular work is the film *A Christmas Story* (1983) which he co-wrote and narrated. In 1994 he did a sequel, *My Summer Story* (aka *It Runs in the Family*). Shepherd passed away on October 16, 1999, at the age of 78. In 2005, he was posthumously inducted into the National Radio Hall of Fame.

JAMES A. ROCCO (Director) Currently VP & Producing Artistic Director, Ordway Center, Saint Paul. Walnut Street: The Witch in *Into the Woods*. Broadway: *The Wizard of Oz*, *Cats*; Off-Broadway: *Streakin'!*, *Sweeney Todd*, *Nite Club Confidential*, *Elegies*; International, National Tours & Regional: *33 Variations*, *As Bees in Honey Drown*, *The Bad Seed*, *Lionmaker* (World Premiere), *Into the Woods*, *Grey Gardens*, *Love Janis* (Ivey Award); *Yankee Doodle* (World Premiere), *Superstar*, *Chess*, *Pirates of Penzance*, *Singin' in the Rain*. Writer: Broadway Songbook® Series, *Streakin'!*, *Rock & Roll*

Christmas. Recordings: *And The Night Stood Still* (FMBQ Top 40 Hit). Broadway Salutes (2013), Ivey Awards (2007/2008), CT Critics Circle (2000/2001). Former Producing Director of Lyric Theatre, Oklahoma. Member: SDC, AEA, Broadway League, ASCAP, NAMT.

LINDA GOODRICH (Choreography) Walnut Street: *Mary Poppins*. Linda has directed and choreographed throughout the U.S., Europe, and Japan. Credits include work at Radio City Music Hall, Carnegie Hall, New York Music Theatre Festival, Goodspeed Opera House, Paper Mill Playhouse, TUTS, 5th Avenue, Theatre Works Palo Alto, Sacramento Music Circus, PCLO, The MUNY, Pittsburgh CLO, St. Louis Rep., La Mirada, Cincinnati Playhouse, and extensive work at Music Theatre Wichita. Professor Musical Theatre- University of Michigan.

DOUGLASS G. LUTZ (Music and Vocal Direction) has conducted more than 175 productions across the United States and internationally. His 30 WST Mainstage credits include *Fiddler on the Roof*, *The Producers*, *Les Misérables*, *Carousel*, *Miss Saigon* (all Barrymore nominations), *In the Heights*, and

ABINGTON

WHO'S WHO IN THE CAST

West Side Story, among others. Doug won the Carbonell Award for outstanding music direction of *The Most Happy Fella* at The Jupiter Theatre. Many thanks to Bernard, Mark, and James. Love to Renee and Audra.

J BRANSON (Scenic Design) has been a Chicago-based designer for more than 20 years, working coast to coast, and in Canada. National tour credits: *The Music Man*, *Beauty and the Beast*, *Brigadoon*, and *Chitty Chitty Bang Bang*. Regional premieres: *A Christmas Story*, *Hairspray*, *Mary Poppins*, *Thoroughly Modern Millie* and *The Little Mermaid*. Other regional work: *Smokey Joe's Café*, *Jekyll & Hyde*, *Sunset Boulevard*, *Assassins*, *The Baker's Wife*, and *Chess*. Love and thanks to James, Linda and Jody for all the fun!

MARY FOLINO (Costume Design) Mary is glad to be back as the WST Costume Shop Manager! She was recently the Costume Director of the Milwaukee Repertory Theater, and previously the Assistant Costume Shop Manager here at WST. Favorites designs include *Ain't Misbehavin'*, *Five Presidents* (MRT), *Hair* (Prince Music Theater), *The Mousetrap* (WST), *Around the World in 80 Days* (WST), and *High Society* (WST). Many thanks to everyone at the Walnut for their love and support!

PAUL BLACK (Lighting Design) Regional Credits: Theatre Aspen, Fulton Theatre, Arizona Theatre Company, Actor's Theatre of Phoenix, Phoenix Theatre, and Childsplay, Inc., Maltz Jupiter Theater, Maine State Music Theater, Music Theatre of Santa Barbara, American Stage, Carousel Dinner Theatre. WST: *High Society*, *Mary Poppins*, *9 to 5*, *In the Heights*, *Music Man*, *The King and I*, *Buddy Holly Story*, *39 Steps*, *Curtains*, *White Christmas*, *Peter Pan*, *Hairspray*, *Dirty Rotten Scoundrels*, *Eclectic Society*, and *The Producers*.

ZACH WILLIAMSON (Sound Design) Broadway (Associate): *Lysistrata Jones*, *The Ritz*, *Pal Joey*. Off-Broadway credits: Irish Repertory Theater, 2nd Stage, American Records, among others. Regional credits: 5th Avenue Theater, Cincinnati Playhouse, Dallas Theater Center, Denver Center, Baltimore Center Stage, among numerous others. Sound system design, sales and installations include New York Transit Museum, First Congregational Church Columbus, University of Vermont, Kansas City

Rep, Park Slope Food CoOp, Zeiders Theater. Currently associate designer for the Broadway and national tour of *Wicked*. Member USA-829. zwdesign.biz.

WILLIAM BERLONI (Animal Director and Trainer) 2011 Tony Honoree for Excellence in Theatre and 1977 and 2013 Outer Critics Awards. Current Broadway: *Annie* 1977 to *The Audience* 2015 and twenty three in between including *A Christmas Story*. Animal Director for the upcoming musical *Because of Winn Dixie*. Credits include hundreds of Off-Broadway, regional theatre productions (four at Walnut Street) and tours. Recent television: star of *From Wags To Riches With Bill Berloni* on Discovery Family, *Mr. Robot*, *Power* and *The Wiz Live*. Published author of *Broadway Tails*. He is also Director of Animal Behavior at the Humane Society of New York. Follow us on Facebook, Twitter and theatricalanimals.com.

LORI AGHAZARIAN (Stage Manager) This is Lori's 10th season here at the Walnut. Prior to joining WST, Lori spent seven seasons as PSM at the Prince Music Theater. Freelance credits include Wilma Theater, Opera Co. of Phila., Pig Iron Theatre Co., 1812 Productions, PTC, and the Eugene O'Neill Theater Center.

DEBI MARCUCCI (Stage Manager) A South Philly native, Debi has worked her way up through the ranks here at WST over the past 23 years and is now in her 18th season serving as Mainstage SM. Also a director, she has directed both plays and musicals both here at WST and elsewhere, and greatly looks forward to directing this season's musical *Always...Patsy Cline* in WST's Studio 3. Proud to be a part of the WST family for so long, and forever grateful to Bernard Havard for the privilege. Love to Chris Always!

JOEL MARKUS (Production Manager) This is Joel's fifth season at the Walnut. Other credits: ten seasons at the Indiana Repertory Theatre; four years at Geva Theatre Center in Rochester, NY; five summers at the Weston Playhouse in Vermont; American Players Theatre in Spring Green, Wisconsin; and North Shore Music Theatre in Beverly, Massachusetts. He is a graduate of Indiana University and originally from Miami, Florida.

WHO'S WHO

MARK D. SYLVESTER (Managing Director) Mark's extensive career has spanned Summer Stock to Broadway as an actor, stage manager, box office treasurer, theatre manager, marketing and public relations director, and general manager. This season he is proud to be celebrating his 22nd season at the Walnut. After several years working with commercial theatre he has devoted his career to non-profit theatre companies since 1987. To date, Mark has been associated with more than 400 stage productions. An avid collector of musical theatre recordings, his collection contains nearly 3,000 cast albums from around the world. Widely regarded as a theatrical marketing expert, Mark lectures and consults with organizations internationally. He has served on many boards and the Advisory Committee of Samuel French, the international play publisher and licensing company. He currently serves on the board of the National Alliance for Musical Theatre. With Bernard Havard he co-authored the book *Walnut Street Theatre*, published by Arcadia Publishing. Since he joined the Walnut in 1994 it has become the most subscribed theatre company in the world.

BERNARD HAVARD (President and Producing Artistic Director) Vox Populi (The Voice of the People) was written on the Walnut Playbills in the 1800s. Whenever the Walnut has strayed from a populist program, the theatre has gone bankrupt. When I came here 33 years ago, we had no programs and no audience. Today we enjoy the largest subscription of any theatre in the world. So, my thanks to our loyal audience and a warm welcome to newcomers who enjoy and believe in what we do. I have tremendous admiration for the artists who have dedicated their lives to the theatre and the Walnut, in particular. Our theatre is a non-profit 501-C3 institution and we rely on contributed income to extend our reach into the community. Last season we reached more than 180,000 students in our city schools. We have 32 trustees who give their time, wisdom and contributions to help guide this historical treasure. I came to the Walnut in 1982, and I am as excited now about our future as I was in the beginning. My heartfelt thanks to all who enter this theatre. For my biography, go to About Us on our web site at WalnutStreetTheatre.org.

FRIENDS CENTRAL

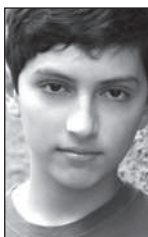


Children's Ensemble Weekday Team

(Performs all Mon.-Fri. eve., plus Wed. mats. 12/23 & 12/30, and Fri. mat. 11/27)



Aidan Brito



**Anthony
Flamminio**



Lexi Gwynn



**Jillian
Henderson**



Josiah Jacoby



Rachel McVey



**Portia
Murphy**



Noah Scher



**Gabrielle
Schoener**



Nick Williams



Jacob Wilner



Children's Ensemble Weekend Team

(Performs all Thurs. mats., plus all shows Sat. and Sun.)



**Zach
Anderson**



**Jordan
Budney**



**Cameron
Flurry**



**Jakob
Kleeman**



**Cambria
Klein**



Luke Plunkett



Marco Porras



Jack Prisco



**Matthew
Saylor**



Alanna Stein



**Julianna
Zannikos**



PLAYBILL
STORE

PLAYBILLVAULT.COM



WALNUT STREET THEATRE

BOARD OF TRUSTEES

Chair.....Denise D. Hodgson
Chairman Emeritus.....Louis W. Fryman, Esq.
Chairman Emeritus.....Matthew Garfield
Chairman Emeritus.....John D. Graham
Vice Chairman.....David S. Blum
Vice Chairman.....Robert L. B. Harman
Vice Chairman.....Francis J. Mirabello
Vice Chairman.....Richard A. Mitchell
Treasurer.....R. Todd Ireland
Secretary.....Lauren A. Harrington

Ronald E. Bowlan
Ira Brown
Robert Ciminelli
Thomas J. Coultres
Louis J. D'Ambrosio
Jeffrey Ferro
Christopher Franklin
Albert A. Giagnacova, ChFC, CL
Ramona Gwynn
Bernard Havard
Ben Lipitz
Audrey Merves
Joe Olejniczak
Scott Rankin
Cedric Rockamore
Edward Satell
Keith D. Schneck
Jennifer Toll Schulman
Jon C. Sirlin
Ellen Tobie
Todd C. Vanett
Gloria Watson
Richard Woosnam

ALUMNI TRUSTEES

Ashok N. Bakhru, Valli Baldassano, Bruce Belzak,
Maureen Breakiron-Evans, George M. Chamberlain, Jr.,
Rebecca R. Clark, Allan M. Dabrow, Joseph E. Ellis, Sr.,
Barry Genkin, Donald Gleklen, Bruce Goldberg, Terry Graboyes,
Michael Hagy, Joanne Marie Harmelin, Jeremy D. Johnson,
Ira L. Kamens, Kenneth E. Kirby, Robert A. Korn,
Ann M. Liacouras, Theresa E. Loscalzo, Esq.,
Craig R. MacQueen, James E. Marks, Kyle Anne Midkiff,
George W. Murphy, Ann Marie Richter, Renee H. Rollin,
Edward J. Ryan, Dolly Beechman Schnall,
Martin W. Spector, James M. Tholey, Philip J. Webster

HONORARY MEMBERS

Mr. Charles Fuller, Ms. Carole Haas Gravagno,
Ms. Anne Jackson, Mr. Neil Simon, Mr. Stephen Sondheim,
Hon. Mark Squilla, Ms. Lily Tomlin

WALNUT STREET THEATRE STAFF

ARTISTIC

President and Producing
Artistic Director.....Bernard Havard
Assistant to the Producing Artistic Director/
Casting.....Brian Kurtas, CSA
Casting/Literary Apprentice.....Rita Sirianni
Literary Manager.....Beverly Elliott

ADMINISTRATION

Managing Director.....Mark D. Sylvester
Assistant to the Managing Director/
Company Manager.....Kathryn McCumber
General Management Apprentice.....Caitlin Pinick
Controller.....Len Karabell
Assistant to the Controller.....Ali Nebistinsky
Audience Services Manager.....Angelia Evans
Assistant Audience Services Manager.....Dan Ludwig
Audience Service Apprentices.....Anna Killeen,
Megan Smith
Refreshment Services Manager.....Robert Nealis
Facilities Manager.....Bruce Myers
Environmental Services.....Keisha Bailey, Denise Edwards,
Dionne McClennan, Renee Rayfield,
Victoria Robinson, Tony Sample, Warren Stokes

DEVELOPMENT

Director of Institutional Advancement.....Rebekah Sassi
Associate Director of Development.....Robert Weinstein
Individual Giving Manager.....Laura Van Tassel
Development Assistant.....Melissa Hoke
Development Apprentice.....Dane Allison

EDUCATION

Director of Education.....Thomas P. Quinn
Assistant Director of Education.....Ashley Kerns
Education Programs Associate.....Pat Shane

Education Production Associate.....Amanda Gallup
Education Apprentice.....Angie Confredo
Acting Apprentices.....Jared Calhoun, Devon Fields,
Kayla Leacock, Deontez Lockett, Donovan Lockett,
Caryle Messman, Kathryn Miller, Mikey Wecht
Theatre School Faculty.....Krista Apple, Marissa Barnathan,
Langston Darby, Amanda Gallup, Sharon Geller,
Nate Golden, Jasmine Hammond, Heidi Hayes,
Noah Herman, Ashley Kerns, Emily Kliemo, Brian Kurtas,
Meghan Malloy, Emily Mattison, Christina May,
Drucie McDaniel, Ellie Mooney, Alyssa Mulligan,
Susan Quinn, Tom Quinn, Amina Robinson,
Peter Schmitz, Amanda Snarski, Susan Riley Stevens,
David Stradley, Tara Tagliaferro, Eric Thompson,
Ellen Tobie, Leah Walton, Greg Wood, Holly Yokley

MARKETING

Director of Marketing
and Public Relations.....Ralph Weeks
Communications Manager.....Amy D. Rodgers
Marketing Assistant.....Adrian Anderson
Marketing Apprentice.....Peter Marshall
Public Relations Apprentice.....Amanda Hickey
Box Office Treasurer.....Rick Dougherty
Assistant Box Office Treasurer.....Tom Brzozowski
Ticketing Services Manager.....Mandy Targoff
Associate Ticketing Services Manager.....Krissy de Groot
Ticketing Services Associate.....Matthew Morrell
Ticketing Services Apprentice.....Amanda Shaffern
Senior Ticketing Service Agent.....Liz Childs
Tele-Sales Manager.....Andy Burr
Assistant Tele-Sales Manager.....Santina Andretta
Senior Tele-Sales Agents.....Omar Cameron, Shirley Carter,
Iris Costow, Stephen Dickenson, Jeff Dienes,
Carmen Fields, Kareemah Ferron, Ben Forbes,
Marcus Gonzalez, Maria Guiana, Harry Kalish,
Andre Mack, Adam Markind, Laurene Nixon,
Jill Owens, Keith Porter, Marie Riccui, Barbara Simons,
Sal Testa, Rob Waldman, Elliot Waters, Hardie Wedeen

PRODUCTION

Production Manager.....Joel Markus
Assistant Production Manager.....Siobhan Ruane
Production Management Apprentice.....Christopher Bratek
Stage Managers.....Lori Aghazarian, Debi Marcucci
Stage Management Apprentices.....Sean Ravitz,
Domingo Mancuello
Studio 3 Stage Manager.....Angela Cucco
Studio 3 Stage Management Apprentice.....Marguerite Frey
Technical Director.....Glen Sears
Studio 3 Technical Director.....Andrew Thompson
Shop Management Apprentice.....Emily Graver
Head Carpenter.....Eric LaValley
Carpenters.....Steven Balduzzi, Tyler Shipley, Paul Hewitt,
Stephen Wolff, Roland Reed, John Gambone
Carpenter Apprentices.....Reagan Ganis, Erica Lee
Scenic Charge.....Leslie Curd
Assistant to the Scenic Charge.....Sarah Ganek
Scenics.....Katie Woodward, Radha Vakharia,
Stephanie Marum Mohan
Scenic Apprentice.....Bridget Willingham
Properties Manager.....Kate Coots
Properties Management Apprentice.....Sidney Martin
Head Props.....Charles Margies
Properties.....Shane Dreher, Kevin Isenberg,
Kyle Hanahan, Ron Mazzone
Properties Apprentices.....Crystal Armstead,
Natalie Reichman
Costume Shop Manager.....Mary Folino
Assistant Costume Shop Manager.....Julia Poesz
Costume Apprentices.....Sarah Mitchell, Susan Benitez
Lead Dresser.....Deb Holloway
Dressers.....Alison Levy, Anya Lovardi, Katie Foster
Stitchers.....Amanda Wolf, Gretchen Ellis,
Kayla Speedy, Rebecca Kanach
Wig Designer.....Lara Dalbey
Wig/Wardrobe Apprentice.....Cate Broomhead
Stage Crew
Head Carpenter.....Cornelius de Groot
Head Electrician.....Frank Garcia III
Head Properties.....Bill Lloyd
Head Flyman.....Aaron Wilson

Head Sound Engineer Ryan Peavey
 Stage Crew Apprentice..... Alex Bjornsson
 Production Intern..... Zoe Ganslaw
 Costume Stock Coordinator Stephanie Muntone
 Animals handled by Rochelle Smith
 Rehearsal Pianist.....Mark Yurkanin
 Child Coordinator..... C.J. Celeiro
 Dance Captain..... Andrew Eckert
 Kids Dance Captain..... Jenny Piersol
 Doctors.....Jeff. Fam. Med. Assoc., Jeff. Otolaryngology



BACKSTAGE EMPLOYEES AND SCENE SHOP EMPLOYEES ARE REPRESENTED BY THE INTERNATIONAL ALLIANCE OF THEATRICAL STAGE EMPLOYEES. (I.A.T.S.E.).



UNITED SCENIC ARTISTS REPRESENTS DESIGNERS FOR THE AMERICAN THEATRE



MUSICIANS REPRESENTED BY THE AMERICAN FEDERATION OF MUSICIANS.



Actors' Equity Association (AEA), founded in 1913, represents more than 45,000 actors and stage managers in the United States. Equity seeks to advance, promote and foster the art of live theatre as an essential component of our society. Equity negotiates wages and working conditions, providing a wide range of benefits for its members, including health and pension plans. AEA is a member of the AFL-CIO, and is affiliated with FIA, an international organization of performing unions. The Equity emblem is our mark of excellence. actorsequity.org



The Director/Choreographer is a member of the STAGE DIRECTORS AND CHOREOGRAPHERS SOCIETY, a national theatrical labor union.

PROUD MEDIA PARTNERS FOR THE 2015-16 SEASON



NBC10 is proud to support the work and mission of Walnut Street Theatre, the oldest theater in America. For more than 200 years, Walnut Street Theatre has been bringing families together to celebrate arts and culture in Philadelphia, all while remaining committed to local artists, talent and training. From your proud partners at NBC10, "Bravo!"



Metro, Philadelphia's #1 newspaper, is proud to partner with Walnut Street Theatre, now in its 207th season, in supporting Philadelphia's artists and promoting art education in the local communities. Pick up Metro every Thursday for our Going Out section or read it online at metro.us.



The mission of the Walnut Street Theatre Company is to sustain the tradition of professional theatre and contribute to its future viability and vitality. It does so through the production and presentation of professional theatre; the encouragement, training and development of artists; the development of diverse audiences; and the preservation and chronicling of its theatre building, a National Historic Landmark.



Walnut Street Theatre is a member of the Greater Philadelphia Cultural Alliance, Citizens for the Arts in Pennsylvania, the National Alliance for Musical Theatre, the League of Historic American Theatres and the Greater Philadelphia Chamber of Commerce.



Walnut Street Theatre receives support through a grant from the Pennsylvania Council on the Arts, a state agency funded by the Commonwealth of Pennsylvania.



Walnut Street Theatre acknowledges with appreciation Bryce's Catering Company (Wynnewood, PA) for their elegant catering of theatre events.



Accessibility Equipment, Training and Marketing provided by Independence Starts Here, the statewide cultural accessibility program of VSA PA/Amaryllis Theatre Co., jointly led in different regions in PA by cultural partners in that region. In Greater Philadelphia, Independence Starts Here is jointly led by Art-Reach, Inc.



Support for Walnut Street Theatre's general operations provided in part by the Philadelphia Cultural Fund.



American Airlines is the official airline of Walnut Street Theatre.



PLAYBILLVAULT.COM

WALNUT STREET THEATRE 23



AMERICA'S OLDEST THEATRE — PHILADELPHIA'S MOST POPULAR THEATRE COMPANY

WALNUT STREET THEATRE

FOUNDED 1809 825 WALNUT STREET • PHILADELPHIA PA 19107

Walnut Street Theatre wishes to express gratitude to the following individuals, corporations, foundations and government agencies for their contributions to the Annual Fund:

Forrest Society (\$25,000+)

Anonymous	M&T Bank/Wilmington Trust	PNC Arts Alive
American Airlines	METRO Philadelphia/City Paper	Joan B. Prewitt
Courier Post	Mix 106.1	Progressive Business Publications
Bernard Havard &	NBC 10	The Shubert Foundation
Judy Capuzzi Havard^	PECO	Stradley Ronon Stevens & Young LLP
The Hearst Foundation, Inc.	Pennsylvania Council on the Arts	Syde Hurdus Foundation
Louis and Bessie Stein	The Philadelphia Inquirer	William Penn Foundation
Foundation Fund #2	Philly Weekly	WRTI

Booth Society (\$10,000+)

12th Street Gym	The Hamilton Family Foundation	Philadelphia Cultural Fund
The ARAMARK Charitable Fund	Horace W. Goldsmith Foundation	PricewaterhouseCoopers LLP
Lou & Kim D'Ambrosio	Independence Foundation	The Rebecca Capuzzi Memorial Fund
Jeff & Janie Ferro	Lincoln Financial Group Foundation	Ed & Cyma Satell
Matt & Marie Garfield	National Endowment for the Arts	Vulcan Spring & Mfg. Co.

Barrymore Society (\$5,000+)

Matthew & Megan Abbott	R. Todd Ireland	Scott & Sharon Rankin
The Brown Foundation	Jane James	Daniel & Wendi Ruddy
Drs. James Byers, III & Stephanie Chuipek	Janet & Lew Klein	James D. Scully, Jr. & Marlene Stoczko
Anna Darby-Matteoda & Terrance Darby	The Louis W. Fryman Scholarship Fund	Suzanne F. Roberts
Mr. Peter R. Denton &	Macy's Foundation	Cultural Development Fund
Mrs. Audrey J. Denton	Chase & Susan McDaniel	Theatre Forward
The Dow Chemical Company	Mr. & Mrs. Francis J. Mirabello	Universal Health Services
Sylvia & Harold Farrey	Richard A. Mitchell	James & Rose Vendetti
Marilyn J. Faust	Maureen E. Molloy	Walter & Gretel Hellendall
Gerald & Helga Finsen	The Mutual Fire Foundation	Education Fund
Glenmede	Pennsylvania Lumbermens Mutual	Richard & Diane Dalto Woosnam
Bob & Louise Harman	Insurance Company	

Cushman Society (\$2,500+)

Anonymous (6)	eBay Foundation Corporate	Johnson & Johnson	David & Lyn Montgomery
AIG	Advised Fund at Silicon Valley	Family of Companies	Stephen & Lucy Paccione^
Dan & Reeva Benau	Community Foundation	Mr. & Mrs. Jeremy Johnson	Jennifer Toll Schulman
Eugene, Joann & Jennifer	John & Elizabeth Gontarz	Sonya & Joseph Kelly	Ronald, Leslie & Amanda Shur
Bissell	Steven I. & Genevieve Gross	Josephine Klein	Jon C. & Karen P. Sirlin
David S. Blum &	Mr. & Mrs. Arnold Herenstein	Joseph & Peter Lomax	Roger & Kathi Smith
Mark B. Woodland	Herman Goldner Company	Louis N. Cassett Foundation	TD Charitable Foundation
Joseph & Suzanne Calabro	In loving memory of	Christopher & Michele Mahle	Charles & Clarice Thum
The CIGNA Matching Gifts	Frank J. Heron	Edward & Roberta Martin	UPS
Program	Sharon Hudson	Mr. & Mrs. Arthur Mattia	Marion M. Walter
	IMC Charitable Foundation	Robert Peter Miller	June & Steve Wolfson
	Jack Miller Family Foundation	Evalind Minor	

Jefferson Society (\$1,500+)

Anonymous
Susan Adamczyk
Air Products & Chemicals Inc.
Ash Family Foundation
Bruce C. Belzak
Dolores & Ronald Bowlan
Mr. & Mrs. Henry Brasteter, Jr.
C.V. Starr & Company, Inc.
Bob & Cheryl Carfagno
George M. Chamberlain
Allan & Tina Dabrow
Nancy L. Dinsmore
Sandy & Joanne D'Orazio
Anthony & Laura Fiorenza
Sylvan & Sybil Freedman
Rhoda & Louis Fryman
Gary & Terri Fulwider
Gelman & Pelesh, P.C.
Al & Luci Giagnacova

Mr. Edward Goldberg
Ron & Sandy Gould
Graboyes Commercial
Window Company
Mr. & Mrs. John D. Graham
The Hassel Foundation
Mark B. Hassenplug
The Haverford Trust Company
Ken & Nancy Hellendall
The Herman & Jerry Finkelstein
Foundation
Charles W. Horn, III &
Patrick M. Rumaker
Karen & Joseph Israel
Ken & Elaine Kirby
Tony & Jane Lane
Ginny & Gordon Lapinski
Ann M. Liacouras
Rosalie & Ben Lipitz

Stephen E. Lore
Patty & Jim Mack
Mr. & Mrs. Edward J. Mitchell
Dr. Jonni S. Moore
Mario & Rosemarie Nicolais
Alan Jay Ominsky, MD &
Judge Marlene F. Lachman
Ann & Lanny Patten
Susan & Arthur Petrella
Kristen & Jay Petroff
Frank Plateroti & Dr. John Mully
Mr. & Mrs. Vincent Redes
and Morgan
Kelly Reice
Mrs. Edwin P. Rome
Robert & Marilyn Rubin
Joyce Seewald Sando
Rebekah Sassi & Kirk Berlenbach
Ilana Segal

Bud & Betty Shapiro
F. P. Slack & P. Henrigues
Harry E. Springfield, Jr.
Mr. & Mrs. Frank Stearns
Jesse W. & B. Lois Stuart
Mr. & Mrs. Donald C. Tantum
Mr. & Mrs. Richard T. Taylor
Mr. & Mrs. Jim Tholey
Kathryn S. Hayes &
Victor J. Tortorelli
Dr. & Mrs. Alan and Edye Twer
Lori & Robert Scott Uhl
Jim & Stephanie Ward
Gloria Watson
Joseph & Eileen Wawrzynek
Joann White
Forrest & Kathy Worrell

Kemble Society (\$1,000+)

Anonymous (2)
Actors' Equity Foundation
Charles & Helen Alexander
The Ani Fiordimondo
Scholarship Fund
Aqua
Dr. Sucha & Mr. Michael Asbell
The Benevity Community Impact
Fund, a fund of American
Endowment Foundation
Bradford White Corporation
Tracy A. Broomall
Mr. & Mrs. Leslie R. Butler
Anastasia Chrysofos
Dr. Todd & Wendi Cohen
Commonwealth Land Title
Insurance Company
John & Mary Conlon
Joseph D'Orazio
Andrew, Amos, A.J. & K. Driban
Robert J. Eberle Jr.
Electronic Theatre Controls, Inc.
ExxonMobil Foundation
William Faris
Ray & Ruth Fausak

Rose Anne & Louis A. Fiore
Michelle Franklin & Sheila Abrams
Walter & Jayne Garrison
Aileen Gergely
Mr. & Mrs. Charles L. Ginder
Dr. Mindy Goldberg & Charles Rose
Lynne Z. Gold-Bikin &
David O. Smith
Jane & Joe Goldblum
Patrick & Shelly Guise
Mr. & Mrs. Roger Hallowell, Jr.
Carolyn & Donald Hann
Mr. & Mrs. Brian Hanna
Lauren & Matthew Harrington
James & Claudia Haviland
James Herman, Esq. &
Brenda Lee Eutsler, Esq.
Frances Sherr & Robert Hess
Denise D. Hodgson
Marc Hoyer
James T. Johnston, Sr.
Bowen J. Knarr, Jr. & Kate Sheldon
LMC-Plasticsource
William Lombard
Maureen Lord-Benson

Frank & Darlene Lordi
James E. Marks
John & Janet Marsella, Jr.
McDowell Posternock, PC
Jeanette & Richard Merion
Anne Marie Mockus
Steven & Deborah Mongiardo
Ruth & Jerry Mooney
Michael & Dawn Murray
Hayler, Robbie & Meighan Osborn
John & Michelle Prevostnik
Richard N. & Linda K. Ralls
Dr. Renee H. Rollin
Eric Scharndinger
Dolly Beechman Schnall
Keith Schneck
The Seixas Family
Kathy & Don Shannon
Dr. Robert G. Sharrar
Rita A. Silvestri
William & Mary Simpson
William R. Snell, Esq.
Martin & Cindy Spector
Steven & Lynne Spencer

State Farm Companies Foundation
Good Neighbor Grant Program
Jerry & Joyce Stein
Jennifer Sullivan
Mark D. Sylvester
William M. Toplis
John & Barb Ungerman
USLI
Todd & Barbara Vanett
Vanguard Group
Mr. & Mrs. Mickey Velez
Dr. & Mrs. Anthony W. Villare
Richard Volpe
Mr. & Mrs. Paris Washington
Carolyn Bunny Welsh &
Harry McKinney
Kathryn West
Dr. & Mrs. Franklin West
Thom Wiernicki
Timothy & Leora Wile
Debbie & Ron Wolf
Ruth Anne & David Woolsey
Doug Zegel

Producing Angels (\$500+)

Anonymous
Howard Aaronson
Drs. Ronald & Marcia Abraham
Drs. Randy Ackerman &
Donna Churlin
Edward & Roseann Adamczyk
David J. Addis & Sankar Singh
Mr. & Mrs. James Ahlum
Mr. Winfield E. Akeley[^]
Ron & Daryl Albury
Ms. Margaret M. Alford
Mr. & Dr. Raymond Alimenti
Marylee & Stuart Alperin
Paul M. & Mary Lee Anderson
Albert & Patricia Antrobis
AXA Foundation

Arthur & KC Baldadian
Lynda Barness
Rena & Sam Barnett
Mary R. Barry
Mrs. Erna Bjornsson
John Braceland
Tim & Mary Ann Bramhall
Mark D. Braverman
George & Nancy Brodie
Ms. Marjorie Brooks
Michael J. & Alice L. Brown
Francis J. Brzozowski
Thomas F. Brzozowski
Bob & Treva Burger
Yvonne & Bruce Burgess
Stephen & Susan Bush

Mr. & Mrs. Bransby and
Margaret Bushey
William & Joann Butler
CA, Inc
Mr. & Mrs. Robert J. Callahan
Elizabeth F. Casmas
Mr. & Mrs. Carl Cencetti
John T. Chumbley & Carol Chumbley
Mr. & Mrs. Robert H. Cook
Corporate Piping, Inc.
Christine & Kenneth Coulter
Mr. & Mrs. Alan Craig
Karen Crane
Karen & Robert Cuzzolino
Kimberly & Walter Cwietniewicz
Stephen & Sandy Daukaus

Mr. & Mrs. William P. and
Susan P. Degler
Frank Demarco
Richard Dougherty
Dr. Charles & Mrs. Brenda Driben
Mr. & Mrs. Timothy Duffy
Edelstein-McKinstry Family
Marie & James Ely
Mr. & Mrs. N. Fenimore, Jr.
Kalman & Suzan Fine
Josie Fischer
Stanley & Maryann Fisher
Gerald & Jean Frank
Rick & Julie Frost
Susan M. Garber
Edmond Ghisu

Valerie & David Gladfelter Don & Carol Kleken Dr. & Mrs. Herbert I. Goldberg Gail & Samuel Goldstein Edward V. Grattini Greater Philadelphia Cultural Alliance David R. Griscom & Berminna Solem Sondra & Joel Haness Jim & Linda Hartz Lynda & David Herendeen Louis & Eileen Hermans Bill & Clare Higgins Tom & Paula Hollencamp Stephen & Mary Holt Jerry Hook & Jacqueline Smith Tom & Joyce Howley Bruce & Alice Hudson Mr. Robert Hulitt Mike & Betty Hummel Emeline T. Hunter Ms. Deborah Iacovone Mr. & Mrs. Peter Iannotta	Kevin & Fran Jardine Tom & Joann Jordan Mr. & Mrs. Robert Kennedy Sherrie & Nelson Klein Peter & Joyce Klugherz George F. Koch, Jr. & Santo A. DiDonato Brian Kurtas & Jason Ketelsen Ms. Mary H. Ladd Anthony L. Laganelli Mrs. Ruth Sarah Lee Todd Levin & Andre Beckett Mr. William A. Loeb Tinker Lonergan & Dave Johnson Terry Loscalzo Lee & Lauri MacMinn Kenneth Mallin Kenneth Marchioli Mr. & Mrs. Marchioli Paul J. Marcotte Joseph & Margaret Martelli Paul & Karen McTamney Rick & Daria Meehl Stan Meltzer	Patricia S. Meyer Ms. Kyle Anne Midkiff Miller & Flink Families Dr. James Miller Rick Moog & Pat Martin Paul E. Morse Jr. Gerry & Brenda Mullane Lisa & Tom Murphy Mr. & Mrs. Francis Nichols In Honor of Mario & Rosemarie Nicolais Donna & Seymour Nowicki Joe & Linda Olejniczak Harvey & Lisa Ostroff Deborah Ott & Angel Macasieb Mr. & Mrs. Frank Palopoli Daniel & Michelle Peel Marcia & Don Pizer Phyllis & Charles Sol Polin Dorothy Haas Praiss Prudential Foundation Wayne & Karen Ranbom Bruce & Cindy Rangnow Adrienne & Thomas Rehiel	Pete Ricchiuti Robert Wood Johnson Foundation Matching Gifts Ann Robinson Drs. Brad & Elizabeth Robinson Mr. & Mrs. Robert K. Roush, Jr. Mr. & Mrs. R. Sampson Dona & Allen Schneider Carol & Jerry Schwartz Ellen Schwartz Ann Seiberlich William & Dolores Seiberlich David & Joanne Shaffer Mr. & Mrs. Alex D. Shalaway Dolph Simons Rowland & Elaine Smith Mr. & Mrs. Joseph St. Georges Al & Mary Ann Stevens Sherryl & Ted Strand Thomas E. Swazuk & Linda Hiortdahl Gail & Terry Sweet TE Connectivity Employee Engagement Fund	ThermoFisher Scientific Thrivent Financial for Lutherans Foundation The Triolo Family Bill & Pat Turbett John & Victoria Turlik Donna Votto James & Kathleen Walters Beau & Valerie Walton Mel & Gail Weinstein Rob, Amy & Nora Weinstein Hon. Diane M. Welsh Alan Wender Mr. & Mrs. Jack Whittaker The William Goldman Foundation Mr. & Mrs. G. V. Willman and "Great" David & Kathleen Wojcik Faith & David Wolford Gina T. Zegel
---	---	--	--	---

Directing Angels (\$300+)

Anonymous (5) Sandra Abraham Dr. Milton & Beverly Adams M. Faith Angell & Kenneth Carobus Ellen E. Barrett Dennis & Elizabeth Bartelme Dr. & Mrs. Kenneth J. Basalik Mr. & Mrs. Robert Bauers Bruce & Linda Bengtson Sidney & David Biddle Daniel Bigelow & Suzanne Cole Barbara & Brian Binney Beaty Bock & Jonathan Miller^ Michael & Natalie Bolinski Janet, Dan & Jacob Boris Mary Jane Breen David & Janet Breskman Shelley & David Brietling Mr. & Mrs. Thomas E. Brightman Drs. Jonathan & Rachel P. Brill Eileen & Bernard Brown Carol E. Brown Jim & Mary Brown Robert Brown Marilyn R. Burgin Mr. & Mrs. Christopher Burks Mayor & Mrs. Edward Campbell Joseph & Gina Candelore Edward & Dorothy Carter Wendy & Joseph Casillo Ms. Nancy L. Cervino Dr. & Mrs. A. J. Chialastri Mr. & Mrs. Dale E. Choate Mary Anne & Nick Ciasullo Lisa Collier Mary Chomitz & Morton Collier Commercial Gaskets Thomas J. Coultas Mrs. Sarah A. Cullen Vic & Eva Dawson Mr. & Mrs. James C. Deever Robert Dennis Carol D'Eustachio David M. & Susan Y. Devor Craig Disston Mr. James V. DiToro, Jr.	Francis M. Dziuba Mr. & Mrs. Melvyn Effron Helene Ehrlich-Cohen & Marc Cohen Paul Engstrom Mrs. Kate W. Evans John H. Farrell Peter & Adrienne Feuer Bill Flannery Automotive Melvyn Freid Mr. & Mrs. John and Barbara Gericke Dr. Elaine Gibbs Chris & Margie Giles^ Nana Goldberg Mr. & Mrs. Robert Goodman Ms. Donna Gordon Dr. Marcia & Dr. Alexander Grande, III Margueritte Gray Victoria Green H. Barton Greenspan Ina & Earl Gross Dr. & Mrs. Hammer Tom & Rosemary Hampton Jeanne Hayden Frances Heffner Jack & Marilyn Hines Mr. & Mrs. John R. Hogan Roger & Jean Holland Frank Houston Robert & June Hudson Jim & Carol Hunsicker Jo & Thomas E. Hyden Russ & Mary Jackson Dr. & Mrs. Edwin A. Jensen Dr. & Mrs. Gerard Johnson Marcia & Ned Kaplin Elizabeth Kennedy Mr. & Mrs. W.A. Kline John & Paulette Labar Harry & Stacy LaBelle Mr. & Mrs. Saverio Lacroce Earl & Mary Laney Karen Laraway Joe & Andrea Leahy Dr. Howard R. Levy Linn One Hour Cleaners, Inc. Carol & John Little	Stephanie Long Richard & Kathleen Lowry Patricia Lukaszow Dominic & Marian Macchione Boyd & Judith Mackleer Tony & Lori Mannino Dr. & Mrs. Harry E. Manser, Jr. Lana & Linda Marcinek Laura Markowitz & Steven Miller Vivien & Allan L. Marmon Dr. Wendy Martinez Debbie & Elliott Moser Mr. & Mrs. Joseph Maseychik Mr. & Mrs. Steve Mazda Ilene Wolf McCaffrey Mr. & Mrs. J. McCarthy Jill & Shawn McGlinchey Merck Partnership for Giving Kenneth & Connie Merritt Elizabeth R. Meyer Frances Miller Sandy & Ron Miller Patricia M. Moore C & M Noveltyes and Joseph J. Morgan Dr. & Mrs. Richard and Bonnie Moses Alice Myers C. Raymond Nelson Francine & Joe Nietubicz Laura Nolet Mary Ann O'Donnell Mr. & Mrs. Thomas O'Reilly Mary & Daniel Palmer Madeline & Joseph Patterson Linda Penza Francis Peters Ruth Peters Ms. Pamela Phelan Kathryn Phillip Mr. & Mrs. Steven B. Pinsky Drs. Domenic & Dorothy Pisano Beatrice S. Pittairn Robert & Anne Pritchard Dr. & Mrs. Christopher Rapuano Beth & Jim Reber Sally & Edwin Rosenthal Dr. & Mrs. Walter Rubin	Hon. & Mrs. Wm. Rufe, III Phyllis Sambar Alan & Linda Sanders Evelyn Scudder Barry & Judy Shafer Mr. & Mrs. C.A. Sherman In honor of Jon & Karen Sirlin Nancy & Michael J. Skiba James L. Smith Mary Rose Smochek Theresa James & Thomas Snyder John Solari Mr. & Mrs. Jason Sorgini Bill Spencer Mr. & Mrs. Donald Staudt, Sr. Steinbiss Family Mr. & Mrs. Domenic Stellato Ruth & Norman Stuessy Mr. & Mrs. Timothy Sweeney Anne Synnstedt Gerard Thompson Wayne Tobolski Mr. & Mrs. John Tomaselli H. Selwyn & Judith S. Torrance Dr. & Mrs. Ronald E. Uschold Mrs. John Vanburen Joseph & Sandra Vasta Law & Hella Volgenau Margot Waitz & Gordon Manin Jeff Walsh & Mark Klingensmith Willis & Mary Jane Warfel Mr. & Mrs. Edward Welsh Mr. & Mrs. Howard White Russ & Carol Whitman David & Karen Winning Thomas & Betty Jean Wissinger Eileen Wolfe Dr. & Mrs. George Woody Robert Wright Judith & Fred Young Laurie & Paul Young Sandra Zarodnansky Dr. Stephanie Zarus Susan & Kevin B. Zebrowski
--	--	--	---

26 PLAYBILL



Benefactors (\$200+)

Anonymous (5)
Mr. Gerald Abelson
AETNA Foundation, Inc.
Mr. & Mrs. Donald S. Alderfer
Jason Alves & Michael Etheredge
Mrs. Lois Annand
Mr. & Mrs. Richard Anthony
Barbara & Leonard Aquilino
Mr. & Mrs. Sheila and Tad
Archambault
Elizabeth Avery
Marcy & Daniel Bacine
Melinda Baiada
Janice Baldwin
Michael & Mary Barbee
Mr. & Mrs. Charles Barnard
Dr. Michael Barnett
Neal & Sandy Barnett
Ronald & Joyce Bayer
Mr. Edward Beaver
Don & Lynn Bechtel
Phyllis F. Belzak
Elaine & Edward Benoff
Ruth Ann Bice
Mr. & Mrs. Thomas W. Bieri
David & Deana Binder
Ken & Marie A. Bishop
Ron & Anita Black
Boeing Gift Matching Program
Wendy B. Boer
Scott F. Breidenbach
Theresa Brennan
Peter & Jane Bridge
Pam & Rick Byrd
Fred Carpenter &
Carol Borzumato
Jennie Castaldo
John & Marguerite Celani
Ms. Linda M. Celia
Kenneth & Gretchen Chadwick
Mark & Barbara Chamberlain
Harvey & Jan Chanin
Marylou Chappel
Anthony & Linda Chiesa
Nelly & Scott Childress
Mr. Charles J. Claus
Mr. & Mrs. Philip Claxton
Elaine M. Clay
Ron & Betsy Clayton
Mr. Ralph Clemmer
Mr. & Mrs. Peter and Jane Cohen
Robert & Deborah Cohen
Allan & Rose Coletta
Jeremi Conaway
Kevin & Gail Connor
Charles Coyle
Robert & Virginia Cragg
Richard & Diana Crean
Mr. & Mrs. Albert Crescenzo
Tom & Sue Crop
Dr. Barbara Cullen, D.V.M.
Bonnie Green &
Frank Cunningham
Malachi & Olivia Cunningham
Lance Curley
Sophie & Robert D'Agostino
Ms. Michele Daniele &
Mr. Chris Coffey
Stephen Dante &
Karen Fung Dante
Kristy DeTitta
Mr. & Mrs. Kevin Deal
Bill & Ramona Deal
Francis & Elaine Decembrino
Mr. & Mrs. James P. Deckard
Mr. & Mrs. Joseph P. Denny
Lisa & Donald Dissinger
Lee Ditmar
Peter & Mary Doghramji
Mr. & Mrs. Dragone
Gary & Marlene Dworkin
Steve Eisenstein & Lisa Longo
Jean Berg Eselgroth
Arthur & Eileen Etchells
Paul & Judy Farber
Ms. Joan M. Farkas
Ms. Dorothy (Dottie) Faust
Wayne & Linda Feaster
Maria & William Faeley
Marilyn & Howard Ferguson
In memory of Mary Fields
Mr. & Mrs. Darren and
Dearest Fields
Leona Fierszt
Mark & Fay Fisher
Mr. & Mrs. Philip W.J. Fisher
C. Donald & Mary Forney
Mr. & Mrs. Kenneth Frank
Drs. Barbara & Len Frank
Margaret Fretz &
Gerald Heckmann
Ms. Sue Frey
Martin & Jane Friedman
Michael C. Friel
Phillip & Joan Galbo
Stephen & Marian Galer
Dr. Russell & Mrs. Laura
Gallagher
Dr. & Mrs. Robert J. Geller
Bill & Gini Giambatista
Mr. Stanley Ginsburg
Mr. & Mrs. Nicholas Giordano
Richard & Arlene Goldberg
Arlene Goldstein
George & Jackie Goldstone
in memory of
Dina Michelle Goldstone
Dale & Laura Goodreau
Dr. Priya Gor
Fred & Sue Gordon
Michael & Dawn Grasso
Francis R. Grebe
Rae Greenberg
Jessica Greenfield in memory of
Helen M. Powers
Mr. & Mrs. Michael and Linda
Greenstein
Mary Jane Griffith
Mr. Robert Hafter
Dan & Lorri Halberstadt
Judy A. Hansen
Constance T. Happerset
Noel Harbist
Dr. John A. Harman
Ms. Jeanne Hart
Howard Hartley
Edward Heary
In honor of Nancy Hellendall
Mr. & Mrs. Thomas Hemphill
John & Merrilee Henley
Victoria Hipple
Alicia & John Hlywak
Jim Hogan
Mr. & Mrs. Charles Hottenstein
Sam Howe & Dodi Fordham
Mr. & Mrs. James Hudson
Karen Huggins
Elisa & Richard Hunigman
Mr. & Mrs. Peter Iannotta
Dr. & Mrs. Geza Ince in memory
of Robert I. Ince
Brian & Kim Itterley
Dr. & Mrs. Stanley R. Jacobs
Suzanne Janson
Aram & Jacqueline Jerrehian
Barbara John
Ms. Richard Johnson
Bert & Connie Jones
Homi Kapadia
Dr. & Mrs. Jeffrey Katz
Don & Karen Kaufman
Dennis Keleshian & Chris Dostal
Judy Kelleher
Paul Kelly, III & Kate M. Harper
Mr. & Mrs. John W. Kemble Jr.
Paul Keuerleber
Lois Khatchadourian
Alan & Henrietta Kiel
Joan & J. Elwood Kirk
Wayne Klotzbach
Mrs. Sandra Koch
Don Kohler
Dr. & Mrs. Sylvester Kohut, Jr.
Talbot & Charlotte Kramer
Mrs. Suzanne Kratz
Mr. & Mrs. Douglas Kriebel
Mrs. Esther Kurtz
Howard & Pat Kyser
Andrew & Rebecca Lamborn
Anita Lamond
Ms. Abbie Lampe
Karen & Robert Landman
Charles & Lucinda Landreth
Dr. & Mrs. Scott Landvatter
Pamela J. Leek
Mr. & Mrs. Thomas Leidy
Harry & Carol Leopold
Craig & Stephanie Lewis
Beth A. & Stephen F. Lewis
Dr. & Mrs. Mott Linn
Lynn & James Litzke
Robert & Sharon Long
Barbara Luptak
Chuck & Jean MacGregor
Alexander & Jennifer Madeleod
William Magee
Mr. Robert Marcinkowski
Robert E. Marshall
Greg & Kathy Martin
Karen V. Matz
John & Susan McAneny
Jim McCaffery
Lindsey McClennen
Mr. & Mrs. Thomas H. McGann
Stu & Sandy McGee
Harriet McGraw
Mr. & Mrs. Thomas McHugh
Mr. & Mrs. Joe and
Dolores McKenna
Dr. & Mrs. James Meadowcroft
Jeffrey Melton
Stacy & Richard Merkin-Eden
Mary E. Meyers
Mr. & Mrs. Antonino Micela
Carol Micklin
Jim & Mary Ann Miles
Arthur P. & Marjorie L. Miller
Angela & Hugh Miller
Hermann & Barbara Moser
Christine Mundt
Kyle Musal
Jerry A. Naessens
Harry Neidig & Carol Kennedy
Network for Good
Gene & Sally Nicholls
James Nixon
Kathie Harper Nixon
Linda Nolan
Mr. Walter Norris
Mr. & Mrs. Michael Novakovic
Mr. & Mrs. R. Lynn Oakes
Mr. & Mrs. Stuart Ockman
Jay & Sheri Oshinsky
Rick Osman
Dr. Arellyne B. Pacho
Mrs. Joan Palitz
Mr. & Mrs. Joseph Pasquarello
Bonnie Pastman
Elizabeth & Jeffrey Paul
John & Judith Peakes
Susan Peck
Michelle Pederson
Dr. & Mrs. Bernard and
Joy Pekala
L. Stephan & Rochelle Perchick
Barbara Pickard
James L. Pierson
Mr. & Mrs. Martin Pley
Patricia H. Polinsky
Mrs. Judith Porter
Mary Prychka
Mr. & Mrs. Thaddeus Ratzkowski
RBAS Unlimited, Inc.
Sarah-Jane Rice
Dr. & Mrs. Malvyn Richter
Christopher Ritchie
Kevin & Jane Roach
Joan C. Roberts
Carl & Donna Robinson
Dr. Nancy Harris &
Dr. Mitchell Rodman
Bill Rose
Mr. & Mrs. David Rosen
Mr. & Mrs. Robert Rosenbaum
Gary Ruff
Tracy Russo & Mitch Kelly
Mary & Paul Rutter
John & Peggy Sabo
Ron & Gail Saunders
Joyce Scarfo
Mr. Gerald Schatz
Joyce & Seth Schulman
Dr. & Mrs. Henry Schwartz
Carol & Gregory Scott
William & Nancy Seibert Jr.
Lela B. & Don S. Seidel
Mr. & Mrs. Carl Senseinig
Mr. & Mrs. David Service
Mr. & Mrs. Robert Shannon
Dick & Maria Shroy
Robert Shuman & Ron Presby
Adam & Christine Sigal
Marsha M. Silberstein, M.D.
Nancy & Alan D. Silverman
Ronald N. Silverstein
Arlene Glenn Simolike, Esq.
Gail & Larry Simon
Barry & Sandra Singer
Donna & Jerry Slipakoff
Robert Snow
Robert & Mary Grace Sobczak
Erma Cacci Sobol
Joseph & Patricia Spampinato
Eric Spare
John Spielberger
Joan S. Stafford
Mrs. Allie F.B. Stanford
Drs. Arthur & Sherry Starr
Marge & Ty Steinberg
Lee & Sally Stetson
Cynthia Stewart
Edward & Joyce Stoeber
Paul Stolpen
Bruce & Sue Stone
Richard & Linda Stoops
Mr. & Mrs. Richard Stoudt
Alice & Walter Strine
Dr. Michael Stroock &
Ms. Dolores Yundt
Mr. & Mrs. Daryl Stull
Roger Stumacher
Patricia Taub
Mr. & Mrs. S. Taub
Marlene & Joe Testa
John & Rochelle Thompson
Donald Tihansky
Christopher Tompkins
Jose Torradas &
Miren Salsamendi
Dr. & Mrs. Charles Taurtellotte
Susan & Robert Tribit
Warren Uziualko
The Vanguard Group
Matching Gifts Program
Mr. & Mrs. Tom VanHolum
Michael Wacey &
Elaine Jenkins-Wacey
Ms. Frances Wagner
Mary Ellen Walder
Dr. Valaida S. Walker
Mr. & Mrs. Michael B. Walsh
Michael J. Walsh
Mr. & Mrs. Leonard and
Dorothy Wasserman
Brian Watterson
Richard & Patricia Webster
Raymond & Elizabeth
Waddington
In Honor of Ralph Weeks
Joseph & Carol West
In Honor of Michael Whistler
Ms. Ann J. Williams
Kurt & Terry Williams
Marian M. Wolfert
Ele Wood
Ms. Linda S. Wynne
York West Exchange LLC
Manal Zerkan-Prada
Sheryl T. Zigon
Gloria Zingaro & Todd M. Welch
Mr. & Mrs. Leon Zmroczek

Walnut Street Theatre graciously acknowledges additional supporters online at WalnutStreetTheatre.org/support/ways-to-give

For more information regarding Walnut Street Theatre's annual fund, affectionately called our "Angels Campaign," please contact the Development Office at (215) 574-3580 or angels@walnutstreettheatre.org. In addition to Paybill listings, benefits associated with each level of giving can enhance your experience when you attend the Theatre!

^ Includes a donation made to The Rebecca Capuzzi Memorial Fund