

PLAYBILL®



WALNUT STREET THEATRE
PHILADELPHIA, PENNSYLVANIA



Escape to *Margaritaville*

**BROADWAY'S
“EUPHORIC
CELEBRATION!”**

Entertainment

“SIX TOTALLY RULES!”

The New York Times



SIX



BROADWAY • ON TOUR
SIXONBROADWAY.COM



ORIGINAL BROADWAY CAST - PHOTOS BY ANDREW ECCLES

PLAYBILL®

Chairman Emeritus: Arthur T. Birsh
Editor in Chief Emeritus: Joan Alleman
Secretary/Treasurer: Shamindra Jagnanan

Chairman & CEO: Philip S. Birsh
Chief Financial Officer: Shamindra Jagnanan
Chief Operating Officer & VP: Alex Birsh
Director of Manufacturing: Robert Cusanelli
Executive Assistant to CEO & COO: Dalconerys Reyes

Editor in Chief: Diep Tran
Production Managers: Alexander Near
Jenna Perrino
Prepress Manager: Seán Kenny
Prepress Specialist: Benjamin Hyacinthe
Managing Editor, Classic Arts: Stephen Vratots
Art Director: Kesler Thibert
Creative Services Manager: Dean Greer
Managing News Editor: Logan Culwell-Block
Features Editor: Talaura Harms
New York Broadway Editors: Scott Hale
Khadijah Rentas
Managing Program Editor: Matt Bonanno
Program Editors: Amy Asch
David Porrello
Andrew Rubin

Publisher, West Coast Sales & Partnerships: Glenn Shaevitz
Vice President of Sales: Joshua Stone
Associate Publisher: Jolie Schaffzin
Associate Publisher: Michel Manzo
Head of Sales for Theatrical and Regional Markets: Nicholas Foster
Director, Restaurant Advertising: Clara Barragán
Sales Marketing Manager: Kelly Werner
Advertising Sales Associates: Jackie Churgin
Franchesca Reese
Sales Assistant: Joe Weinberg
Ticket Manager: Yadira Near

Chief Technology Officer: Jon Goldman
Director of Digital Operations: Andrew Ku
Creative Director: Bryan Campione
Director of Events & Creative Strategy: Leonard Rodino
Director, Online Advertising & Operations: Jim Cairl
Senior Digital Media Manager: Katie Clooney-Gainey
Social Media Coordinator: Andrew McKie

PHILADELPHIA ADVERTISING SALES
Michel Manzo
(610) 527-7047 | mmanzo@playbill.com

Advertising Sales
729 Seventh Avenue, 4th Floor
New York, New York 10019
(212) 557-5757

PLAYBILL® is published by PLAYBILL Incorporated, 729 Seventh Avenue, 4th Floor, New York, NY 10019. Copyright 2023 by PLAYBILL Incorporated. All Rights Reserved. PLAYBILL® is a Registered Trademark of PLAYBILL Incorporated.

Contents

APRIL 2023

WELCOME 2

THE PROGRAM 4
Including Cast, Who's Who and Credits





FOUNDED 1808

AMERICA'S OLDEST THEATRE – PHILADELPHIA'S MOST POPULAR THEATRE COMPANY

WALNUT STREET THEATRE

825 WALNUT STREET • PHILADELPHIA, PA 19107

Dear Theatregoer,

Welcome back to the Walnut! I am so glad to have you as our guest for this heartwarming and humorous Mainstage season finale, Jimmy Buffett's *Escape to Margaritaville*.

A legendary season of excitement is coming to our Mainstage for our 2023-24 lineup! In October, we'll start off with **ELVIS – A MUSICAL REVOLUTION**, a new musical celebrating the cultural icon who changed the history of Rock and Roll. Featuring over 40 iconic songs, Elvis' story will have you "All Shook Up" as you see 'The King' as you've never seen him before.

Next, we invite you to "Be Our Guest" for the holidays with **DISNEY'S BEAUTY AND THE BEAST**. Based on the Academy Award-winning film, this magical adaptation features the beloved characters and timeless songs that inspired a generation. We last staged this enchanting fairytale nearly two decades ago, and I can't wait for a new generation to experience our all-new production of this Disney story.

Then, when two couples meet for a late-night party, their lives will never be the same in Edward Albee's **WHO'S AFRAID OF VIRGINIA WOOLF?** Both an explosive comedy and an unusual portrait of two American marriages, this intimate and explosive Tony Award-winning Best Play is Albee's masterpiece.

Next, we'll celebrate the 100th anniversary of The Marx Brothers' historic three-month run at the Walnut with **GROUCHO: A LIFE IN REVUE**, a riotous musical directed by and starring Walnut favorite Frank Ferrante with a versatile cast of performers and musicians. I always enjoy Frank's incomparable performance as Groucho, and anyone who loves to laugh will too!

We'll bring our 215th season to a rousing conclusion with the smash-hit Broadway sensation, **BEAUTIFUL – THE CAROLE KING MUSICAL**. The inspiring true story of King's remarkable career, *Beautiful* takes you on the ride of a lifetime. Featuring hits like "Natural Woman," "I Feel The Earth Move," "Will You Love Me Tomorrow," and more, this celebration of a living legend features the songs you remember – and a story you won't forget.

For now, sit back, relax, and set your clock to island time with Jimmy Buffett's *Escape to Margaritaville*. We love having you at the theatre and look forward to seeing you again soon!

Sincerely,

Bernard Havard,
President and Producing Artistic Director



The house is full.
The lights go down.

NOW WHAT?



Who's
Your
Rock?



Welcome back to the endless possibilities of Broadway.

At Prudential, we're proud to play a role in helping the Broadway community stay resilient. From sponsoring the Curtain Up Broadway Festival in Times Square to supporting programs that foster equity and inclusion in the theatre, **it's all part of our broader, \$1 billion initiative to heighten financial and social mobility everywhere.**



Prudential

Plan / Invest / Insure / Retire

Prudential.com



FOUNDED 1808

AMERICA'S OLDEST THEATRE – PHILADELPHIA'S MOST POPULAR THEATRE COMPANY

WALNUT STREET THEATRE

825 WALNUT STREET • PHILADELPHIA, PA 19107

BERNARD HAVARD

President and Producing Artistic Director

March 28 – May 7, 2023

JIMMY BUFFETT'S ESCAPE TO MARGARITAVILLE

Book by
GREG GARCIA & MIKE O'MALLEY

Music and Lyrics by
JIMMY BUFFETT

Scenic Design
BRIAN FROONJIAN

Costume Design
RICHARD ST. CLAIR

Lighting Design
MATTHEW DEMASCOLO

Sound Design
ALEX BROCK

Wig and Makeup Design
CARISSA THORLAKSON

Director of Production
SIOBHÁN RUANE

Stage Managers
PATRICK DAVID EGAN
ELIZABETH HAROIAN

Associate Artistic Director
BRIAN KURTAS

Music and Vocal Direction by
CHRIS BURCHERI

Directed and Choreographed by
LISA STEVENS

SPONSORED BY



Original Broadway Production produced by Frank Marshall, Rich Entertainment Group,
Anita Waxman and Grove Entertainment

The world premiere of *Escape to Margaritaville* was produced by La Jolla Playhouse, in La Jolla, California
Christopher Ashley, Artistic Director and Michael Rosenberg, Managing Director

MARK D. SYLVESTER
Managing Director

Director of
Development
REGINA SUKANICK

Director of
Education
T.J. SOKSO

Director of Marketing
and Public Relations
ED GILCHRIST



Your thing. Is our thing.

At Rydal Park and Waters, only one thing matters.

Keeping you connected to the things that matter to you.

To schedule a tour, call (215) 999-3619 or visit RydalPark.org

Welcome to Life Plan Community Living.

Rydal Park & Waters

a human good community

**CALL (215) 999-3619 TO LEARN ABOUT
NEW PRICING OPPORTUNITIES.**

CAST

Tully	MATTEO SCAMMELL*
Rachel	AMANDA ROBLES*
Tammy	KELLY J. MAZZELLA
Brick.....	ZACH KONONOV*
Marley	DEMETRIA JOYCE BAILEY*
J.D	BILL VAN HORN*
Jamal/Ted	DANA ORANGE*
Chadd	DANTE BRATTELLI*

ENSEMBLE

DANTE BRATTELLI*, ALEXANDRA FROHLINGER*, RACHAEL BRITTON HART*,
ADAM MANDALA*, KIMBERLY MAXSON*, TAYLOR HILT MITCHELL*,
ANDREW NATALE RUGGIERI, AUDREY BIEHL SIMMONS*,
DEVON SINCLAIR*, TIARA WHALEY, JON YEPEZ*

EXTRAS

ZACHARY DeBEVEC, GREGORY HOLMES JR.,
HANNAH McGRATH, HADLY PATTERSON

UNDERSTUDIES

MATTEO ADAMS (Jamal/Ted), ANNA CACCAVARO (Rachel),
ZACHARY DeBEVEC (Ensemble), NICK ERHOLM (Ensemble),
BRANTLEY EVANS (Extra), JOHNNY FERNANDEZ (J.D.), CHRIS FITTING (Tully),
GALEN GRAHAM (Tully), TIARA GREENE (Marley),
GREGORY HOLMES JR. (Jamal/Ted), SKYLAR JEFFRIES (Tammy),
LINDSAY MARCUS (Tammy), HANNAH McGRATH (Ensemble),
LESLIE MONACO (Extra), HADLY PATTERSON (Ensemble),
JOHN ROULEAU (Ensemble), MONIQUE STREETY (Marley),
BEN THOMAS STRONG (Brick), KERRY ROSE SULLIVAN (Ensemble)

Dance Captain.....AUDREY BIEHL SIMMONS*

* The Actors and Stage Managers employed in this production are members of Actors' Equity Association, the theatre union of Professional Actors and Stage Managers in the United States.

Lisa Stevens wishes to thank for their contribution:
Terra Macleod, Joseph Landa, and Jamie Murray.

The videotaping or other video or audio recording of this production is strictly prohibited.

Artwork by Subplot Studio.

Produced with special arrangement with Broadway Licensing.

LIFE, on a
Scale of You.



Foulkeways
AT GWYNEDD

Rediscover your passions or devote more time to life-long hobbies, the choice is yours.
Discover Foulkeways today!



foulkeways.org | 215-283-7010 | 1120 Meetinghouse Rd, Gwynedd, PA

The Ultimate Playbill Binder

PLAYBILL Binders and Sleeves display, organize, and protect your precious theatre keepsakes for years. The perfect gift for theatre fans everywhere!



PLAYBILL
STORE.com



HERMAN GOLDNER CO., INC.

MECHANICAL CONSTRUCTION & SERVICE

Since 1887

Call: 800-355-5997
For 24-Hour Emergency Service

Mechanical Construction
Plumbing Construction
Sanitary Process Piping
HVAC/Mechanical Service
Plumbing Service
Drain Cleaning/Camera Services
Building Automation Systems

7777 Brewster Ave
Philadelphia, PA 19153
(215) 365-5400 | (888) GOLDNER
goldner.com

MUSICAL NUMBERS

ACT I

“License to Chill”	Tully, Ensemble
“Fins”	Rachel, Chadd, Ensemble, Tammy, Tully, Brick
“Five O’Clock Somewhere”	Tully, Brick, Jamal, J.D., Tammy
“It’s My Job”	Rachel
“Why Don’t We Get Drunk and Screw”	J.D., Marley, Audience, Tourists
“Three Chords”	Tully, Rachel
“We Are the People Our Parents Warned Us About”	Brick, Tammy
“Son of a Son of a Sailor”	Tully, Rachel
“Coconut Telegraph Medley”	Marley, Brick, J.D., Jamal, Tully, Rachel, Tammy, Brick, Ensemble
“Changes in Latitudes, Changes in Attitudes”	Rachel, Tammy, Ensemble, Tully
“Margaritaville”	Tully, J.D., Brick, Jamal, Marley, Ensemble

THERE WILL BE ONE 20-MINUTE INTERMISSION.

ACT II

“Volcano”	Jamal, Marley, Ensemble, J.D.
“Grapefruit, Juicy Fruit”	J.D., Tully, Brick
“He Went to Paris”	Tully, Brick, J.D.
“Cheeseburger in Paradise”	Ensemble, Tammy, Brick
“Tin Cup Chalice”	Tully, Ensemble
“It’s My Job (Reprise)”	Rachel
“Love and Luck Medley”	Tully, Back Up Singer, Rachel, Ensemble
“King of Somewhere Hot”	Tully
“Coast of Marseilles”	Tully, Rachel
“A Pirate Looks at 40”	Tully, Rachel, Tammy, Brick, J.D., Marley, Ensemble
“One Particular Harbor”	Tully, Rachel, Brick, Tammy, Ensemble
“Finale”	Company

SETTING: Present day. The Caribbean & Ohio

THE BAND

Keyboard/Conductor: Chris Burcheri
Guitar 1: Michael Quaile
Guitar 2/Associate Conductor: Jay Rosen
Bass: Fred Weiss
Drums: Kevin Blanke
Percussion 1: Harvey Price
Percussion 2: Travis Goffredo
Reeds: Frank Mazzeo
Trumpet: Jim Ward



Protecting and Providing
Earth's Most Essential
Resource.

AQUA[™]

An Essential Utilities Company

AquaWater.com

CBIZ

Relax
WE'VE GOT YOU COVERED

Accounting & Tax | Property & Casualty
Retirement & Investment | Valuation
Risk & Advisory | Employee Benefits
Life Insurance | Healthcare Consulting
Human Capital Management
Private Equity Advisory

John Fidler
215.827.7476 | john.fidler@cbiz.com

Your Brand **Hand Delivered**
to Your Target Audience!

**Contact us today
to reserve space in PLAYBILL.**

Your Sales Representative:

Michel Manzo
mmanzo@playbill.com
610.527.7047

PLAYBILL[®]

CAST



**Demetria Joyce
Bailey**



**Dante
Brattelli**



**Alexandra
Frohlinger**



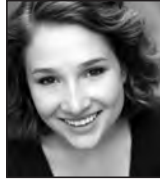
**Rachael Britton
Hart**



**Zach
Kononov**



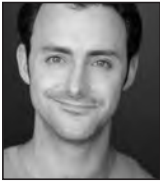
**Adam
Mandala**



**Kimberly
Maxson**



**Kelly J.
Mazzella**



**Taylor Hilt
Mitchell**



**Dana
Orange**



**Amanda
Robles**



**Andrew Natale
Ruggieri**



**Matteo
Scammell**



**Audrey Biehl
Simmons**



**Devon
Sinclair**



**Bill
Van Horn**



**Tiara
Whaley**



**Jon
Yepez**

WHO'S WHO IN THE CAST

DEMETRIA JOYCE BAILEY (*Marley*) is thrilled to be back at the Walnut after making her debut as Mrs. Phelps in *Matilda the Musical*. Demetria has been busy with big band concerts. TV: AmeriHealth Commercial (Lead), "Witness," Apple TV's "Servant," California Rep. "House of Cards," Pearlene Scott in HBO's "The Wire," Nurse in CBS "Hack." Theatre: "God" understudy *An Act of God*; Asst. Director for *Working: A Musical*, Mama Morton in *Chicago*, Electra in *Gypsy* and Ethel Waters in *His Eye Is on the Sparrow*. www.demetriabailey.com. ~ Phil 4:13

DANTE BRATTELLI (*Chadd, Ensemble*) Thrilled to return to the Walnut! Off-Broadway credits include *Comfort Women*, *Dream Babies* (St. Clements Theatre), *He Loves Me Not* (Davenport Theatre); Regional credits include the Walnut, Fulton, Arden, Eagle Theatre, Ocean City Theatre Company, and Media Theatre. Proud alum of the Lee Strasberg Conservatory in New York. Thanks to his friends, family, and Laura for all of their enduring love and support. www.dantebrattelli.com

ALEXANDRA FROHLINGER (*Ensemble*) is thrilled to be back at The Walnut! Walnut Street: *The Little Mermaid*, *Cinderella*. Broadway: *Soul Doctor*. Off Broadway: *Amerike: The Golden Land* at NYTF (Sadie) (Drama Desk Nom.). First National Tours: *Hello, Dolly!*, *R&H Cinderella*, *West Side Story* (Anybodys). Regional: Sacramento Music Circus, Arena Stage. BFA Boston Conservatory. Thanks and love: Mom, Dad, Joey, Becky, Zaida, Josh and The Rogosin-Sokolove Family. www.alexandrafrohlinger.com @alexfröhlinger

RACHAEL BRITTON HART (*Ensemble*) is honored to be back on the Walnut Street stage after making her debut in *Disney's The Little Mermaid!* National Tour: Pippin. Recent Credits: *White Christmas* (Fulton Theatre), Broadway at Music Circus (*Carousel*, *Kiss Me, Kate*, *Something Rotten!*) BC/EFA Broadway Backwards '22 Opening (Asst. Choreographer/Ensemble). Temple Grad. Thank you, wonderful Walnut Team, LDC Artist Rep, and my supportive family and friends! @ihart_dancing rachaelbrittonhart.com

ZACH KONONOV (*Brick*) is ecstatic to be making his Walnut debut! National Tours: *The Spongebob Musical* (Mr. Krabs), *How the Grinch Stole Christmas*. Zach has performed as a guest artist for Disney Cruise Lines in *Frozen*

(*Olaf*) and *Beauty and the Beast* (Lefou). Off Broadway: *That Golden Girls Show*, *50 Shades! The Musical*. Regional: Tuacahn, Adirondack Theatre Festival, The Argyle Theatre. Graduate of University of the Arts. Immense thanks to the production team, HCKR, my family and my friends! Instagram: @Zachkononov

ADAM MANDALA (*Ensemble*) thrilled to return to the Walnut! Regional: *Cinderella*, *Rocky the Musical*, *The Little Mermaid*, *Shrek*, *Young Frankenstein* (WST); *Matilda* (Gretna Theatre); *Legally Blonde*, *Mamma Mia* (WST and Riverside); *Evita* (Riverside); *Newsies*; (Coastal Carolina); *Best Little Whorehouse...*, *West Side Story*, *On The Town* (Finger Lakes MTF). Television: "iCarly," "30 Rock." Cruise: Royal Caribbean International. Adam is a proud alum of Temple University. For my love, Adam Hoyak. @adammandallla

KIMBERLY MAXSON (*Ensemble*) Thrilled and thankful to be back! Favorite credits include: *Shrek*, *Holiday Inn*, *Mamma Mia!*, *A Funny Thing...Forum*, *9 to 5* (Walnut Street Theatre) *Gypsy*, *Billy Elliot*, *Beehive*, *Beauty & the Beast*, *Hello, Dolly!* (Media Theatre), *Cabaret*, *The Producers* (BCCPA), *Crazy for You* (Candlelight Theatre), *Mary Poppins* (OCTC), *Chicago* (Maples Rep). Love to my husband Ronnie and my family! @kimberly_maxson

KELLY J. MAZZELLA (*Tammy*) is excited to be in Philadelphia making her Walnut Street Theatre debut. She was born and raised in North East Pennsylvania, in Mountain Top. Recent credits include Fulton Theatre (*Sound of Music*, *Man of La Mancha*) and recently *The Play That Goes Wrong*) and Arizona Broadway Theatre (*Spamalot*). Kelly holds a BFA in Musical Theatre from The Boston Conservatory. Thank you to my husband, Justin, and my family for their never-ending support. I love you xoxo

TAYLOR HILT MITCHELL (*Ensemble*) Walnut Street Theatre debut! National Tours: *Disney's Beauty and the Beast* (Tumbling Carpet), *The Wizard of Oz* (Mayor of Munchkin City). Regional: Capital Repertory Theatre: *The Wizard of Oz* (Scarecrow), Actors' Playhouse: *It Shoulda Been You* (Brian). Proud graduate of Catholic University and proud AEA member. www.taylorhiltmitchell.com @taylorHmitchell Thankful.

DANA ORANGE (*Jamal/Ted*) is happy to be back home at the Walnut! Previous Walnut

WHO'S WHO

credits include *Rocky the Musical*, *Disney's The Little Mermaid*, *Shrek the Musical*, and *Sister Act*. Other credits: *Choir Boy* (Philadelphia Theatre Company), *Plaid Tidings* (Delaware Theatre Company), *The Color Purple* (Sacramento Music Circus), and *In The Heights* (Park Playhouse). All my love to my big supportive family, both blood and chosen! www.danaorange.com

AMANDA ROBLES (*Rachel*) Amanda is a graduate of the University of the Arts. Recent credits include Vanessa in *In the Heights* (Stages St. Louis and Westport Country Playhouse), Aldonza in *Man of La Mancha* (Stages St. Louis), *Cinderella* in *Into the Woods* (Barrington Stage Co.), Rita in the full workshop production of *From Here to Eternity* (Jerome Robbins Theater), under Sir Tim Rice and as Isabel/Tia Carmen in the World Premiere of *American Mariachi* (DCPA and The Old Globe). @arobles43. ¡Tened Fe!

ANDREW NATALE RUGGIERI (*Ensemble*) A Philadelphia native with a BFA in Vocal Performance from University of the Arts, Andrew is thrilled to return to the Walnut. National tour: *Chicago*, *A Chorus Line* (Mike) Regional: *Ghost* (Sam), *Miss Saigon* (Chris), *The Boy from Oz* (Peter Allen), *An American in Paris* (Jerry Mulligan), *Gypsy* (Tulsa). Special thanks to the production team for this amazing opportunity. Love and thanks to Mom, Dad and family. @andrewnateruggieri

MATTEO SCAMMELL (*Tully*) is a Barrymore award-winning artist based in Philadelphia. *Margaritaville* marks his 2nd production with WST (*Other Desert Cities*). He is a company-member of Obie-Award winning theater company New Paradise Laboratories, and of Wilma Theater's acting ensemble, HotHouse. Matteo has performed in over 35 theatrical productions. 2017 Barrymore-Award for Actor in Lead Role; 2020 Independence Foundation Fellow. Love and gratitude to Lee and our families; thanks to WST Staff/Board, Lisa, Chris, the band, the ensemble. BFA - UARTS.

AUDREY BIEHL SIMMONS (*Ensemble; Dance Captain*) Audrey is beyond grateful you are here supporting live theatre! Previous Walnut credits: *Cinderella* (w/s Ella, Ensemble), *Young Frankenstein* (w/s Inga, Ensemble), *Shrek the Musical* (Wicked Witch), *Legally Blonde* (Kate/Chutney), *Holiday Inn*. Other credits: *Kiss Me Kate*, *The Secret Garden* (Broadway Sacramento), *Beauty and the Beast*, *Annie*, *The Count of Monte*

Cristo, *School of Rock* (Tuacahn). Proud UArts Grad. @audreysimmons. (she/her)

DEVON SINCLAIR (*Ensemble*) is a proud Philly native excitedly returning to the Walnut mainstage after this winter's production of *R&H's Cinderella!* The Penn State alumnus also works around the region as a Director/Choreographer, Teaching Artist, and Professor at Temple University! Favorite credits include *Beauty and the Beast* (Lumiere), *Memphis* (Bobby), and *Newsies* (Specs). Vibrant thanks to his community of loved ones. Media and more at www.FiveSixDevonEight.com | @CHOREATOR

BILL VAN HORN (*J.D.*) Recently at Walnut: *Rocky, The Adventure of the Speckled Band*, *The Little Mermaid*, *A Woman of No Importance*, *Gifts of the Magi*, *Annie*, *Forum*, *Oz*, *A Christmas Story*, *Mary Poppins*, *Driving Miss Daisy*, *Elf*, *The Prince*, and *Fiddler on the Roof*. Directed *Speckled Band*, *Civil War Voices*, *The Curious Incident...*, *The Glass Menagerie*, and created and starred in *O Captain, My Captain: Whitman's Lincoln*. Bill is a permanent member of the acting company at Theatre at Monmouth in Maine. Proud member of Actors' Equity.

TIARA WHALEY (*Ensemble*) (She/Her) is so excited to be making her Walnut Street Theatre debut with *Escape to Margaritaville*. Her favorite roles include Emmie Thibodeaux (*Caroline or Change*, Helen Hayes Award Outstanding Actress in a Musical), Ti Moune (*Once on This Island*), and Heather Chandler (*Heathers*). Tiara thanks her family and husband for always supporting her dreams. @theblacktressdiaries

JON YEPEZ (*Ensemble*) thrilled to return to the WST stage after having a ball in *Cinderella* last year! Other Regional credits: U.S. Premier of *Fame en Español & English* (Goody), *West Side Story* (Chino), *Grease* (Eugene), *Mamma Mia* (Pepper), *In the Heights* (Graffiti Pete), *Newsies* (Dance Captain). BFA Music Theatre/BA Dance — University at Buffalo. Big thanks to Lisa! Love to my parents, familia, & friends. Con amor! @yeppez.jpg

JIMMY BUFFETT (*Music and Lyrics*) Singer/songwriter/author Jimmy Buffett has become a legend of popular culture as the composer of such classic songs as "Margaritaville," "Come Monday" and "Cheeseburger in Paradise." He has recorded over 50 albums, most of which have gone gold, platinum, or multi-platinum. His sold-out concert tours are an annual rite of summer

WHO'S WHO

passage for his legions of fans, affectionately known as Parrot Heads. Born in the Gulf Coast town of Pascagoula, Mississippi, he was raised in Mobile, Alabama. He is a fourth-generation sailor and fisherman, a pilot, a surfer, and a frequent traveler to remote and exotic places of the world, having become addicted to *National Geographic* magazine as a child. The lyrics to many of his songs are influenced by his travels all over the globe. His works as a best-selling author have reached #1 on *The New York Times* bestseller fiction and non-fiction lists. Jimmy has received two Grammy nominations, numerous Country Music Association awards, and was inducted into the Nashville Songwriters Hall of Fame. The song "Margaritaville" has been inducted into the 2016 Grammy Hall of Fame for its cultural and historic significance.

GREG GARCIA (*Book*) created three back-to-back syndicated comedies: "Yes, Dear," "My Name is Earl" and "Raising Hope." For his work on these shows he has received a Humanitas Award, a People's Choice Award, two GLAAD Awards, a Critics' Choice Award, a Golden Globe nomination and an Emmy for Outstanding Writing for a Comedy Series. Garcia's main motivation for entering the world of musical theatre was the hope his oldest son Camden, a very talented actor and director at Boston University, would think he was cool. But also to entertain his parents, Natalie and Tom Garcia, who would drag him kicking and screaming to the theatre as a child.

MIKE O'MALLEY (*Book*) is the creator of the award-winning television series "Survivor's Remorse" and wrote on Showtime's "Shameless" for the first four seasons. As an actor, he was nominated for an Emmy for his portrayal of Burt Hummel on "Glee" and appeared in the films *Sully* and *Concussion*. Television acting credits include "Yes, Dear," "Justified," "My Own Worst Enemy," "My Name is Earl," "Welcome to the Family" and "The Mike O'Malley Show." Film acting credits include *28 Days*, *Deep Impact*, *Cedar Rapids*, *Eat Pray Love* and *Meet Dave*. Way back when, he hosted the Nickelodeon shows "Get the Picture" and "Guts." Playwriting credits include *Three Years from Thirty*, *Diverting Devotion*, and *Searching for Certainty*, which was adapted into the film *Certainty*.

LISA STEVENS (*Director/Choreographer*) Lisa is honored to be making her Walnut Street Theater debut with *Escape To Margaritaville*. Selected credits: Dolly Parton presents *9 To 5 The*

Musical! (West End, London, UK, and Australian companies); *Anyone Can Whistle* (Off-West End, London); *The Little Prince* (Theatre Calgary); Disney's *High School Musical 1 & 2* (worldwide); *Coriolanus* (Bard, Vancouver); *Prom Queen* (London Grand); *Rock of Ages*, *West Side Story*, *Spamalot*, *Fiddler on the Roof* (Drayton Ent); *Grease*, *Guys & Dolls* (Axelrod); *In The Heights*, *Xanadu* (Arts Club). TV/Film: Emmy Award-nominated *Dreaming of a Jewish Christmas*; *Diary of a Wimpy Kid 2*. Reels and full bio at www.lisastevens.biz. Instagram: [lisa_1_stevens](https://www.instagram.com/lisa_1_stevens).

CHRIS BURCHERI (*Music and Vocal Direction*) is excited to be concluding his third season as the Walnut's Mainstage music director with *Escape to Margaritaville*. Past Walnut favorites include *Cinderella*, *Rocky*, *Always... Patsy Cline* and *The Little Mermaid*. Based in Philadelphia, he has also music directed at Bucks County Playhouse, Rutgers-Camden, Arcadia University, and the WST for Kids series, where his musical arrangements have been heard in *A Christmas Carol*. He is a graduate of the University of Pennsylvania. Thank you to Bernard, Mark, and the entire Walnut staff. Love to Mom, Dad, and Maura.

BRIAN FROONJIAN (*Scenic Design*) is thrilled to be designing at the Walnut Street Theatre, where he is currently the technical director. He has been designing and creating professional theater for over fifteen years. Notable theater companies include The New Candlelight Theater, Surflight Theater, The Sandbox Theater and The American Theater for actors in NYC. He is also an award-winning holiday display creator/designer. Brian would like to congratulate the entire production on an amazing job. Special thanks to his wife Fallon and his two sons, Caleb and Colton.

RICHARD ST. CLAIR (*Costume Design*) has designed for the Seattle Opera, Glimmerglass Opera, Philadelphia Theatre Company, the Curtis Music Institute, and the Arden Theatre Company. He is the recipient of two Barrymore Awards for Outstanding Costume Design. Credits include the world premiere of Terrence McNally's *Golden Age*, William Schuman's *A Question of Taste*, and the American premiere of *Phaedra* for the Opera Company of Philadelphia, where he served Resident Costume Designer/Costume Director for 26 years. Member of United Scenic Artists – local 829, and IATSE local 52 – Motion Picture Studio Mechanics.

WHO'S WHO

MATTHEW DEMASCOLO (*Lighting Design*) is excited to be returning to the WST this season. His past shows at the WST include *Beehive*, *Always*, *Patsy Cline* and *Cinderella*. For the last 18 years, Matt has been the Lighting Systems Manager at Production Express, Inc. His theatrical work includes lighting productions at the Fulton Theatre such as *Elf*, *Million Dollar Quartet* and *Little Shop of Horrors*. His freelance lighting design work for local high schools includes shows like *West Side Story*, *Les Misérables*, *Hairspray*, and many more. He enjoys working with students in the educational environment and teaching young adults about theatre.

ALEX BROCK (*Sound Design*) is a sound designer and engineer from Greenfield, Indiana currently based in Brooklyn, New York. This is her Walnut Street Theater debut. Recent credits include Off Broadway: *Becomes a Woman* (Associate-Mint Theater), *Vicksburg* (Associate-Harlem Stage), *Weightless* (Associate-WP Theater); Regional: *The Rewards of Being Frank* (Cincinnati Shakespeare Company). Alex possesses an MFA from University of Cincinnati's College-Conservatory of Music and a BS from Ball State University. She is an Early Career member of TSDCA. www.alexbrocksound.com

CARISSA THORLAKSON (*Wig and Makeup Design*) is a New Jersey-based freelance wig and makeup designer. You may have seen her recent work in *Cinderella* and *Rocky* here at Walnut Street. She has also designed for New York City Center, The Old Globe, A.R.T., McCarter Theatre Center, Hartford Stage, Lookingglass Theatre Company, Two River Theatre, Bay Street Theater, Delaware Theatre Company, Olney Theatre Center, and The Princeton Festival. She has served as a wig and makeup artist across the country. Carissa also creates custom medical wigs, cosplay wigs, and teaches classes in wigs and makeup. You can find her at CThorwigs.com and [@wigician](https://www.instagram.com/wigician).

PATRICK DAVID EGAN (*Stage Manager*) Walnut: *Cinderella*, *Last of the Red Hot Lovers*. Broadway: *Fun Home*, *Newsies*. Off-Broadway: *Taylor Mac's The Hang*, *Howard Crabtree's When Pigs Fly*, *Giant*, *Fun Home*, *Barbecue*, *Privacy*, *Southern Comfort*, *The Mystery of Love and Sex*, *When It Happens to You*. National Tours & other credits: *Roman Holiday*, *War Horse* First National Tour, 25th Anniversary Production of *Les Misérables*, *Newsies*, *Billy Elliot*, *Finding Neverland*, The Kennedy Center, Paper Mill

Playhouse, Bucks County Playhouse, Barrington Stage Company, Hudson Valley Shakespeare Festival. Love to BG! [@whiskuponastarnj](https://www.instagram.com/whiskuponastarnj)

ELIZABETH HAROIAN (*Stage Manager*) Thrilled to be back with WST this season after joining the stage management team last February. Select stage management credits: *Cat on a Hot Tin Roof*, *R&J's Cinderella*, and *Rocky: The Musical* (WST), *Further Than the Furthest Thing* (NYU Tisch), *Symphonie Fantastique* (Basil Twist), *The Pirate La Dee Da* (ATC), *The Secret Garden and Sister Act* (NYU Steinhardt), *Grease* (New London Barn Playhouse), and *Richard III* (Juilliard). Last fall, Liz was in Saudi Arabia managing a truly magical show with five international illusionists. She's worked with many academic programs including NYU Tisch, The Juilliard School, NYU Steinhardt, Atlantic, and ART/Harvard. Amid all of the chaos remember to have fun!

SIOBHÁN RUANE (*Director of Production*) This is Siobhán's tenth season at the Walnut. With over 20 years in the business, Siobhán has worked internationally as a Production Manager and Stage Manager. Previously, Siobhán held the faculty position of Stage Management Advisor at Florida State University's School of Theatre. Additional credits include Cirque du Soleil, Norwegian Cruise Line, Cirque Productions, and various regional theatres. Siobhán holds an undergraduate degree from Rutgers University, an MFA from the University of Delaware, and is (proudly!) originally from the Jersey Shore.

BRIAN KURTAS (*Associate Artistic Director*) has been associated with the Walnut Street Theatre since 2007. He began his career here as a performer and in the professional apprenticeship program, and has since dedicated himself to bringing artists together. He now serves our artists and audiences in the various capacities of casting, directing, programming, and literary management, as his function is to identify the highest quality of artists for our historic theatre. His vision behind unforgettable live experiences and storytelling has become a creative solution from the stage to the screen - He spent 4 seasons as the Executive Producer of Gretna Theatre, has worked on television networks and films including TLC and HGTV, and helped create events and entertainment for brands such as T-Mobile and Walmart while at Live Nation. Originally from Lancaster, Brian is a proud Temple alum and a member of the Casting Society of America.

WHO'S WHO

MARK D. SYLVESTER (*Managing Director*)

Mark is proud to be celebrating his 29th season at the Walnut. His extensive career has spanned Summer Stock to Broadway as an actor, stage manager, box office treasurer, theatre manager, marketing and public relations director and general manager. After several years working with commercial theatre, he has devoted his career to non-profit theatre companies since 1987. To date, Mark has been associated with more than 500 stage productions. An avid collector of musical theatre recordings, his collection contains over 3,500 cast albums from around the world. Widely regarded as a theatrical marketing expert, Mark lectures and consults with organizations internationally. He has served on several boards including seven years with the National Alliance for Musical Theatre where he now holds the honorary position of Board Emeritus and the Advisory Committee of Samuel French, the international play publisher and licensing company. With Bernard Havard he co-authored the book *Walnut Street Theatre*. Since he joined the Walnut in 1994, it became the most subscribed theatre company in the world.

BERNARD HAVARD (*President and Executive Producing/Artistic Director*) *Vox Populi* (The Voice of the People) was written on the Walnut Playbills in the 1800s. Whenever the Walnut has strayed from a populist program, the theatre has gone bankrupt. When I came here 40 years ago, we had no programs and no audience. Today we enjoy the largest subscription of any theatre in the world. So, my thanks to our loyal audience and a warm welcome to newcomers who enjoy and believe in what we do. I have tremendous admiration for the artists who have dedicated their lives to the theatre and the Walnut, in particular. Our theatre is a non-profit 501-C3 institution, and we rely on contributed income to extend our reach into the community. Last season we reached more than 150,000 students in our city schools. We have 20 trustees who give their time, wisdom, and contributions to help guide this historical treasure. I came to the Walnut in 1982, and I am as excited now about our future as I was in the beginning. My heartfelt thanks to all who enter this theatre. For my biography, go to About Us on our website at WalnutStreetTheatre.org.

COMING ATTRACTIONS AT THIS THEATRE!

MAINSTAGE

Our 2023–24 Season includes

- *Elvis – A Musical Revolution*
- *Disney's Beauty and the Beast*
- *Edward Albee's Who's Afraid of Virginia Woolf*
- *Groucho: A Life in Revue*
- *Beautiful – The Carole King Musical*

WST FOR KIDS

- *Disney's FROZEN JR.*
(April 15–May 7, 2023)

WALNUT STREET THEATRE SCHOOL

Contact us about our current classes and the Spring 2023 semester.

CAMP WALNUT 2023

July – August, 2023
Programs for ages 7-18

Call 215-574-3550, ext. 510 or register online at walnutstreettheatre.org

SAVE THE DATE!

Walnut Street Theatre Annual Gala:

IMAGINE

May 18, 2023

at the Ballroom at the Ben

Buy a subscription
or individual tickets
at **215-574-3550**,

WalnutStreetTheatre.org
or Ticketmaster.com

WALNUT STREET THEATRE
825 Walnut Street, 215-574-3550

BOARD OF TRUSTEES

President..... **Bernard Havard**
Chair..... **Scott Rankin**
Immediate Past Chair **Richard A. Mitchell, Esq.**
Chairman Emeritus **Louis W. Fryman, Esq.**
Chairman Emeritus **Matthew Garfield**
Chairman Emeritus **John D. Graham**
Vice Chair/Secretary..... **Ramona Gwynn**
Vice Chair..... **Francis J. Mirabello, Esq.**
Treasurer..... **Robert L.B. Harman**

Jeffrey Ferro
John Fidler
Jack R. Garfinkle, Esq.
Audrey Merves
Patrick Mullen

Tanya Ruley-Mayo
Daniel J. Schuller
Gene Schriver
James D. Scully, Jr.
Ellen Tobie

ALUMNI TRUSTEES

Ashok N. Bakhru, Bruce Belzak, George M Chamberlain, Jr.,
Thomas J Coultres, Louis D'Ambrosio, Joseph E. Ellis, Sr.,
Barry Genkin, Terry Graboyes, Denise Daher Hodgson,
Jeremy D. Johnson, Kenneth E. Kirby, Ben Lipitz,
Theresa E. Loscalzo, Esq., Craig R. MacQueen,
Kyle Anne Midkiff, Ann Marie Richter, Renee H. Rollin,
Keith D. Schneck, Martin W. Spector, James M. Tholey

HONORARY MEMBERS

Ms. Carole Haas Gravagno, Ms. Anne Jackson,
Hon. Mark Squilla, Ms. Lily Tomlin

WALNUT STREET THEATRE STAFF

ARTISTIC

President and Producing Artistic Director..... **Bernard Havard**
Associate Artistic Director **Brian Kurtas**

ADMINISTRATION

Managing Director **Mark D. Sylvester**
Company Manager **Daniel Ludwig**
Management Assistant **Kristen Lamb**
Controller..... **Michael S. Armento**
Assistant to the Controller **Siona Grika**
Audience Services Manager..... **Angelia Evans**
Assistant Audience Services Managers ... **Katrina Dagenais,**
Kelly McCreery
Refreshment Services Manager..... **Dominic Devane**
Facilities Manager..... **Bruce Myers**
Assistant to the Facilities Manager..... **Tony Sample**
Facility Services **Philip Glenn, Jahneaf Hagans,**
Demetrius Hill, Camielle Johnson,
Jonathan Martin, Victoria Robinson, Charles Washington

DEVELOPMENT

Director of Development..... **Regina Sukanick**
Assistant Director of Development..... **Joy Karsner**
Development Associate..... **Sharon Hoffberg**
Development Apprentice **Shaun Furter**

EDUCATION

Director of Education..... **T.J. Sokso**
Associate Director of Education **Amanda Pasquini**
Education Programs Manager..... **Maya Chester**
Education Apprentice **Seraina Schottland**
Acting Apprentices..... **Matteo Adams, Galen Graham,**
Lindsay Marcus, Monique Streety
Teaching Artists ... **Dave Allison, Julianna Babb, Hallie Berger,**
Jared Calhoun, Andrea Rose Cardoni, Hannah Catanoso,
Dylan Collie, Marques DeLeon, Devon Duffy,
Nora Gair, Sharon Geller, Micaela Hickey,
Joshua Hillard, Annette Kaplafka, Brian Kurtas,

Donovan Lockett, Adam Mandala, Kennedy McAlister,
Taylor J. Mitchell, Dana Orange, Domenica Passio,
David Pica, Manny Rimmer, Faith Sacher,
Leah Senseney, Devon Sinclair, Connor Shields,
Grant Uhle, Alexa Wilder, Mandy Wise,
Marissa Wolner, Bill Van Horn

MARKETING

Director of Marketing and Public Relations **Ed Gilchrist**
Communications and
Audience Engagement Manager **Mike Hogue**
Marketing Associate **John Parkinson**
Box Office Treasurer..... **Rick Dougherty**
Assistant Box Office Treasurer **Tom Brzozowski**
Ticketing Services Manager..... **Jeffrey Berry**
Associate Ticketing Services Manager **Sonja Stornes**
Ticketing Services and Group Sales
Coordinator **Christina Taliou**
Ticketing Services Apprentice **Elizabeth Gumula**
Ticketing Service Agents **Aaron Blandino, Shaina Egan,**
Jessica Fowler, Richard Ginsberg,
Jones, Maryann Kuzan, Chris LeVere,
Keeghan McLane, Leslie Monaco,
Luke Solacoff, Madison Williams
Outbound Sales and Telefunding **Anne Marie Borget,**
Rob Waldman

PRODUCTION

Director of Production **Siobhán Ruane**
Assistant Production Manager **Megan Lampron**
Production Apprentice..... **Katie Schumacher**
Production Load-in Manager..... **Matt DeMascolo**
Stage Managers..... **Patrick David Egan, Elizabeth Haroian**
Dance Captain **Audrey Biehl Simmons**
Second Assistant Stage Manager **Adam Mandala**
Stage Management Apprentices **Emma Battle,**
Sophie Klokjin

Technical Director

..... **Brian Fronjinn**
Assistant Technical Director..... **Eli Marsh**
Technical Direction/Shop Mgmt. Apprentice..... **Tyler Bogie**
Head Carpenter **Jon Wheeler**
Assistant Carpenter **Kerrin Frank**
Carpenters **Matthew Dougherty, Marquise West**
Scenic Charge..... **Leslie Curt**
Assistant Scenic Charge..... **Thomasin Parnes**
Scenic Artist **Lauren Sellers**
Scenic Apprentice..... **Laura Payne**
Properties Manager **Shannon O'Brien**
Properties Associate **Leighann Westermeyer**
Head Properties Artisan..... **Natalie Reichman**
Assistant Properties Artisan..... **Davis Caramanico**
Properties Apprentices **Lindsey Silver, Amelia Schuster,**
Caitrin Leigh

Costume Shop Manager

..... **Natalia de la Torre**
Assistant Costume Shop Manager..... **Anya Loverdi**
Draper and Costume Associate **Chloe Swidler**
Drapers..... **Kelly Myers, Kayla Speedy**
Costume Apprentices **Katherine Collins,**
Isabella Granlund
Stitchers **Gretchen Ellis, Francesca Schmalke,**
Laura Robinson, Bob Trump, Anna Sorrentino
Wig and Makeup Coordinator **Claire Waid**
Wig and Wardrobe Apprentice **Kelsey Brooks**
Lead Dresser **Alison Levy**
Dressers **Anya Loverdi, Amari Calloway**
Costume Stock Coordinator..... **Anna Sorrentino**

Stage Crew

Head Carpenter **Mick Coughlan**
Head Electrician **Amber Faulhaber**
Head Flyman **David Cain**
Head Sound **Adam Orseck**
Head Props **Valerie Bannan**
Seasonal Assistant Sound..... **Ryan Erichman**
Seasonal Assistant Lighting..... **Kathryn Morgan**
Stage Crew Apprentice..... **Meredith Spencer**



Actors' Equity Association (AEA), founded in 1913, represents more than 45,000 actors and stage managers in the United States. Equity seeks to advance, promote and foster the art of live theatre as an essential component of our society. Equity negotiates wages and working conditions, providing a wide range of benefits for its members, including health and pension plans. AEA is a member of the AFL-CIO, and is affiliated with FIA, an international organization of performing unions. The Equity emblem is our mark of excellence. actorsequity.org



UNITED SCENIC ARTISTS REPRESENTS DESIGNERS FOR THE AMERICAN THEATRE



MUSICIANS REPRESENTED BY THE AMERICAN FEDERATION OF MUSICIANS



BACKSTAGE EMPLOYEES AND SCENE SHOP EMPLOYEES ARE REPRESENTED BY THE INTERNATIONAL ALLIANCE OF THEATRICAL STAGE EMPLOYEES. (I.A.T.S.E.)



The Director-Choreographer is a member of the **STAGE DIRECTORS AND CHOREOGRAPHERS SOCIETY**, a national theatrical labor union.

PROUD MEDIA PARTNERS FOR THE 2022–23 SEASON



6abc is Philly Proud and honored to support the work and mission of Walnut Street Theatre, the oldest theatre in America! What is Philly Proud? All across the Delaware and Lehigh Valleys, people of all ages are doing wonderful things to improve their communities, and to make life better for their neighbors and friends. Whether you're in Center City, the Jersey Shore, Wilmington, or the Poconos, 6abc Action News is committed to showcasing all these good works and wants you to be proud. Be Philly Proud!



Metro, Philadelphia's #1 newspaper, is proud to partner with Walnut Street Theatre, now in its 214th season, in supporting Philadelphia's artists and promoting art education in the local communities. Pick up Metro every Thursday for our Going Out section or read it online at metro.us.



The mission of the Walnut Street Theatre Company is to sustain the tradition of professional theatre and contribute to its future viability and vitality. It does so through the production and presentation of professional theatre; the encouragement, training and development of artists; the development of diverse audiences; and the preservation and chronicling of its theatre building, a National Historic Landmark.



Walnut Street Theatre is a member of the Greater Philadelphia Cultural Alliance, Citizens for the Arts in Pennsylvania, and the league of Historic American Theatres.



Walnut Street Theatre receives state arts funding support through a grant from the Pennsylvania Council on the Arts, a state agency funded by the Commonwealth of Pennsylvania.



Accessibility Equipment, Training and Marketing provided by Independence Starts Here, the statewide cultural accessibility program of VSA PA/Amaryllis Theatre Co., jointly led in different regions in PA by cultural partners in that region. In Greater Philadelphia, Independence Starts Here is jointly led by Art-Reach, Inc.



Walnut Street Theatre receives additional season operating support from Actors Equity Foundation, Independence Foundation, and Theatre Forward.



THANK YOU TO OUR GENEROUS SUPPORTERS!

Walnut Street Theatre wishes to express gratitude to the following individuals, corporations, foundations, and government agencies for their generous contributions in support of America's Oldest Theatre.

FORREST SOCIETY (\$25,000+)

Janis Goodman	PA Department of Education	Scott & Sharon Rankin
Bob & Louise Harman	PECO	James & Marlene Scully, Jr.
Louis and Bessie Stein Foundation	PNC Arts Alive	Syde Hurdus Foundation
Fund #2	PNC Bank	The Hearst Foundations, Inc.

BOOTH SOCIETY (\$10,000+)

Arthur Murray's Rising Star World Foundation	Ramona Gwynn	Francis J. & Marianna Mirabello
CBIZ, Inc.	Hamilton Family Charitable Trust	Edward & Regina Mitchell
CIGNA	Bernard Havard & Judy Capuzzi Havard	Patrick & Jacki Mullen
Disney Worldwide Services	Ken & Nancy Hellendall	Pennsylvania Council on the Arts
Educational Opportunities LLC	Herman Goldner Company	Roger & Kathi Smith
Essential Utilities, Inc.	Horace W. Goldsmith Foundation	Theatre Forward
Jeffrey & Janie Ferro	Independence Blue Cross	USLI
Fulton Bank	Independence Foundation	Joseph & Kimberly Villani
Matt Garfield	Johnson Kendall and Johnson Inc.	

BARRYMORE SOCIETY (\$5,000+)

Anne & Philip Glatfelter III Family Foundation	The Peter and Audrey Denton Fund	Johnson and Johnson	The Ethel Sergeant Clark Smith Memorial Fund
Archer & Greiner	Faegre Drinker Biddle & Reath LLP	John & Janet Marsella Jr.	The Huston Foundation
Blank Rome LLP	Fox Rothschild LLP	Maureen E. Molloy	The Patricia Kind Family Foundation
Brotherston Homecare	Dennis & Jennie Franklin	Nationwide Private Client	UHS of Pennsylvania, Inc
Buca D'Oro Ristorante	Rhoda & Louis Fryman	Pat's King of Steaks, LP	Sherry Walton
Drs. James Byers & Stephanie Chuipek	Gene Schriver, GLOBO	Philadelphia Insurance Companies	Stephanie Ward & Paul Merollo
C&N Bank	The Haley Foundation	Vincent & Ruth Redes	Anonymous
Cipriani and Werner, PC	Iron Hill Brewery	Dr. Mitchell Rodman	
Daniel Comer	IVY Rehab/ EXCEL Physical Therapy	Rowland & Elaine Smith	
		TD Charitable Foundation	

CUSHMAN SOCIETY (\$2,500+)

Abington Neurological Associates	Charles W. Horn, III & Patrick M. Rumaker	Roberta Martin	Lee & Roy Shubert
Julie & Kyle Bartl	Clara Huntzinger	Dr. Sandra F Mather	Dom Stellato
Dan & Reeva Benau	Kathy & Dave Hychalk	Robert Peter Miller	Steven Goldberg Consulting, Inc.
Jean Berg	Jack Miller Family Foundation	Steven & Deborah Mongiardo	Jesse W. & B. Lois Stuart
William & Joann Butler	Joy Karsner & Brian Barton	Montgomery Family Charitable Fund	SunLife Financial
Bob & Cheryl Carfagno	Thomas & Angela Kay	Perz Morris Hyde	Marlene & Joe Testa
Timothy & Jane Duffy	Erin & Brian Kent	Mario & Rosemarie Nicolais	Jim & Irene Tholey
Elliot's Vending Company, Inc.	Ken & Elaine Kirby	Nochumson P.C.	Alan & Edye Twer
William Faris	Walter Kissel	The Noel Coward Foundation	Lori & Robert Scott Uhl
Ruth Fausak	Brian Kurtas & Jason Ketelsen	NTIS/MDPINS	Marge & Rick Volpe
James & Wendy Gerber	Mary H. Ladd	PA Distribution	Paul Wheaton
Ron & Sandy Gould	Abbie Lampe	Lanny & Ann Patten	Eugene & Bess Wien
John & Sue Hammer	Jane Lane	Robert & Terry Patterson	Victoria Werth & Kevin Jon Williams
Kathryn S. Hayes & Victor J. Tortorelli	Joseph & Peter Lomax	Pugliese Associates	Debbie & Ron Wolf
Tom & Paula Hollencamp	Paul J. Marcotte & Karen A. Brown	Royer Cooper Cohen Braunfeld LLC	Ruth Anne & David Woolsey
		Jeanne Ruddy & Victor Keen	Anonymous (3)

JEFFERSON SOCIETY (\$1,500+)

Susan Adamczyk	Vic & Eva Dawson	Tom & Jo Hyden	Sean Morrissey	Keith Schneck
Paul & Mary Lee Anderson	Allison & Roy DeCaro	IMC Construction	Kenneth Morton	Carl Schoenborn
Bank of America	Sam Driban & Marilyn Neuhauser	Richard Johnson	NJM Insurance Group	Maureen & Fred Selby
BDO USA LLP	Anthony & Laura Fiorenza	James T. Johnston, Sr.	Christian & Noelle Noyes	Kathy & Don Shannon
Dan Bosin Associates, LLC	Jane & David Galli	Jesse Jones	Joseph & Janeen Ostaszewski	Rita A. Silvestri
David & Janet Breskman	Jack & Ellie Garfinkle	Mary Kozar	Eileen Parsonage	William R. Snell, Esq.
Lee Brooks	Larry & Nancy George	Holly Krause & Family	Parx Casino	Dr. & Mrs. Frank Stearns
Tracy A. Broomall	Katherine M. Glaser	Ginny & Gordon Lapinski	Leo Pasholli	Ted & Sherryl Strand
Jessica & Jason Brown	Jack & Pat Graham	Beverly & Stephen Levin	Sharon & John Payne	Mark D. Sylvester
Jeffrey & Diane Bush	Elise Ratner & Nicole Gut	Samuel P. Mandell Foundation	Rev. Lucy Pierre	Richard T. & Ruth A. Taylor
Joseph & Suzanne Calabro	Joe & Otti Hallinan	Andrew Masterman	Marcia & Don Pizer	Tompkins Insurance
Wendy & Joseph Casillo	Tom & Rosemary Hampton	Robert Matcovich	Jack & Hermene Potts	Mickey Velez & Catherine De Groot
George & Dorothy Chmielewski	Gail Heinemeyer	Patrick McGinley	Bruce & Cindy Rangnow	Sally West Williams
Ciocca Subaru of Philadelphia	James Herman, Esq. & Brenda Lee Eutsler, Esq.	McMaster-Carr Supply Company	Juanita & Pete Ricchiuti	Rachel & Brian Wilner
Cozen O'Conner	Robert Hess & Frances Sherr	Meridian Bank	Christopher & Jean Ritchie	Wipfli LLP
Virginia R. Cragg	Denise D. Hodgson	Joseph E. Miller, Jr. Family	Ann Robinson	Anonymous (3)
Cumberland Advisors		Richard A. Mitchell	Robert K. & Dottie Roush, Jr.	
		Dr. Jonni S. Moore	Joyce Seewald Sando	

KEMBLE SOCIETY (\$1,000+)

Matthew & Megan Abbott	Sherri & Daniel Cohen	Robert Gilliam	Don & Sue Miller, In Memory of Lynda S. Flink	Michael & Deanne Schiller
Gerry Abelson & June Idzal	Rodney Comegys	Annamarie Hafer & Jake Oddo	Frances Miller	Radio Dial Marketing – Tom & Chris Schiller
Actors' Equity Foundation	Gary Cosgrave	Christopher & Marguerite Hamilton	Maurice Mitts	Ellen Schwartz & Jeremy Siegel
Raymond & Mary Alimenti	Mr. & Mrs. G. Sterling Coyne II	Linda Harvey	Patrick Moeller	Evelyn Scudder
Marylee & Stuart Alperin	Crooked Eye	Bill & Clare Higgins	Rick Moog & Pat Martin	Patricia & Michael Scully
Will Anderson	Kimberly & Walter Cwietniewicz	Alice Irene Hudson	Ruth & Jerry Mooney	Grace Spampinato
Dr. Sucha & Michael Asbell	Drs. Michael B. Dabrow & Manette K. Fine	Robert & June Hudson	Morgan Stanley	Lynne Delanty Spencer
Rena & Sam Barnett	Mary Dauphinais & Thomas Kenney	Julie & Jerry Jacobs	NRG Energy, Inc.	Dave & Chris Stanton
Emma Beckers	William P. & Susan P. Degler	Debra Jih	Thomas P. Obade, MD	Regina & DJ Sukanick
Joseph & Barbara Bernert	Delancey Street Partners	Mr. Robert W. Jung	Stuart & Carol Ockman	The A Cappella Project
David S. Blum & Mark B. Woodland	Gail W. Dillon	Grant & Nancy Karsner	Hayler, Robbie & Meighan Osborn	Philadelphia Ellen Tobie & Larry Gilberti
Tom & Amy Bohner	Dr. Charles & Mrs. Brenda Driben	Norma Kelly	Deborah Ott & Angel Macasieb	Peter & Viviana Van Deerlin
Robert J. Bowen	Michele Duvivier	Paul & Beth Koob	Diana Overton	Dr. & Mrs. Anthony W. Villare
Dolores & Ronald Bowlan	Robert J. Eberle Jr.	Karen & Robert Landman	Philadelphia Distilling	Lew & Hella Volgenau
John & Linda Braceland	Drs. Bruce & Toby Eisenstein	Joe & Andrea Leahy	Kevin & Jane Roach	Richard Volpe
George & Nancy Brodie	Arthur & Eileen Etchells	Carol & John Little	Drs. Brad & Elizabeth Robinson	Marion M. Walter
Brown, Mary and James	Jeff & Lyn Evans	David Long	Carl & Donna Robinson	Beau & Valerie Walton
Calabrese Charitable Fund – Mr. Christopher J. Calabrese and Mrs. Cathleen A. Calabrese	Anne M. Farrington	Mr. & Mrs. Marchioli	Leonard M. Rosenfeld	Mr. & Mrs. Paris Washington
Mayor Edward & Mrs. Patricia Campbell	Kalman & Suzan Fine	Mr. Jonathan Marmon	Mary & Paul Rutter	Timothy & Leora Wile
Celeriers Cellar	Michelle Franklin	Debbie & Elliott Maser	John & Lauren Sacks, Property Management Redefined	Anonymous
George M. Chamberlain	Ms. Susan M. Garber	Stu & Sandy McGee	Merion	
	Ed & Vaia Gilchrist	Patrick & Paula McGinley	Will & Louise Merriken Charitable Fund	
	Chris & Margie Giles	Jeanette & Richard		

PRODUCING ANGELS (\$500+)

- Drs. Randy Ackerman & Donna Churlin
 Edward & Roseann Adamczyk
 George Ahern
 Margaret M. Alford
 Duane Amendola
 Jacqueline Axilbund
 Mark Barrett
 Mary R. Barry
 Bruce C. Belzak
 Barbara & Brian Binney
 Black Rock Matching Gift Program
 Lucy Boardway
 Bolinski Consulting, LLC
 Janet, Dan & Jacob Boris
 Hank & Melissa Brassteter, Jr.
 Mr. & Mrs. Thomas E. Brightman
 Donna Britt
 Carol E. Brown
 Anthony Bruno
 Kaye Bunkin
 Yvonne & Bruce Burgess
 Christopher & Percy Burks
 Bransby & Margaret Bushey
 Kathryn G. Carlson
 Natalie Caruso
 Vincent Caruso
 Susan Casey
 Tony Catanoso
 Ken Cenci & Nora McElean-Hopson
 Marcy A. Chartrand
 John T. Chumbley & Carol Chumbley
 Mary Anne & Nick Casullo
 Sharon Coghlan
 Peter & Jane Cohen
 Richard & Diana Crean
 Tom & Sue Crop
 Dr. Diaz-Arastia
 Kevin & Barbara Dillon
 Susan DiPaolo
 Richard Dougherty
 Sheryl Durham
 Gary & Marlene Dworkin
 Patrick & Dorothy Egan
 Dr. Beverly Emanuel
 Elizabeth Freeman
 Sean & Amy Fahey
 John & Janette Fidler
 Bill & Karen Fisher
 Joel & Carol Fleisher
 Franklin Residencies
 Kristin & Gary Friedman
 Julayne Frost
 Robert & Bernadette Garofola
 Raymond Giuffrida
 Arlene Goldberg
 The William Goldman Foundation
 Gail & Samuel Goldstein
 Stephen & Shirley Greenlee
 Eleanor & Stephan Gribok
 David R. Griscom & Bernminna Solem
 Judith Guise
 In Memory of Sondra and Joel Hanes
 Reetie Hannan
 George Hathaway
 High St. Hopsitality
 Nancy Hobbie
 Sharon & Mike Hoffberg
 John R. & Eileen Hogan
 Pam Howard
 Tom & Joyce Howley
 Jim & Carol Hunsicker
 Richard & Becky Hunt
 Charles Intenzo
 Ginny & Frank Jackson
 Carlton Johnson
 Dr. & Mrs. Gerard Johnson
 Lynn Jordan
 Marcia & Ned Kaplin
 Roger E. King
 Gerhart & Anne Klein Charitable Fund
 W. A. & Elaine Kline
 Dr. Sylvester & Jeraldine Kohut, Jr.
 Myra Kranzel
 Carol Larkin
 Lawrence Legar
 Victoria Levesque
 Greg Liddle
 Rafael & Carol Lissack
 Mr. & Mrs. James Love
 Richard & Kathleen Lowry
 Bill & Sue Lowry
 Joel & Barbara Luber
 Patricia Lukaszow
 Wayne & Andrea Macfadden
 Vanessa Mapson
 Michael & Sam Markovitz
 Kristi McGarvey
 Harriet McGraw
 Estate of Catherine McLaughlin
 Elynn McMullin
 Miriam & Stan Meltzer
 Mary Middleman
 Kyle Anne Midkiff
 Jim & Mary Ann Miles
 Marjorie Miller
 Michael & Karen Morgan
 Hermann & Barbara Moser
 Emma Nashner
 Suzanne V. Norris, Realtor
 Mr. & Mrs. R. Lynn Oakes
 Rick Osman
 Joan Palitz
 Frank & Anne Palopoli
 Matt & Pam Panarese
 Richard M. Parison, Jr.
 Dr. Bernard & Joy Pekala
 L. Stephan & Rochelle Perchick
 Eileen Pieper
 Susan Pitcher
 Daniel Pitchford
 Marc Platitzky
 Frances Pliskin
 Nancy Pliskin
 Patricia H. Polinsky
 Patricia Pomeranz
 Wayne & Karen Ranbom
 Jill Stern & Rick Lindberg
 Deborah Rodia
 Adam Rogers
 Bruce & Susan Rosenbaum
 Sally & Edwin Rosenthal
 The Rouse Family Charitable Trust
 Robert & Marilyn Rubin
 Calvin & Tonya Ruley-Mayo
 Michelle Russo
 Arthur & Marie Salvagno
 C. A. & Loraine Sherman
 Carol & Douglas Sherwood
 Robin Sherwood & John Zimmerman
 Eric Spare
 Roman & Lynne Tatarowicz
 Mr. & Mrs. Sylvan Taub
 The Fox Foundation, In Memory of Rex & Carol Fox
 The Peterman Group
 Thrivent Financial for Lutherans Foundation
 Edward & Mary Ann Tierney
 Gail R. Tillman
 Wayne Tobolski
 Susan & Robert Tribit
 Dr. Meryl Udell
 Cathy & Frazier Van Velsor
 Richard Vanberg
 Joseph & Sandra Vasta
 Donna Visioli & Cesar Silebi
 Walter & Pam Vogler
 Patrick Ward
 Raymond & Elizabeth Weddington
 Robert & Lucinda Weiner
 Len Weiser
 Ann White and Jeff Ettinger
 Kurt & Terry Williams
 David & Karen Winning
 Maureen & Joe Yanoshik
 Dr. Alice Zal
 Gina I. Zegel
 In Honor of Elie & Arielle Biron
 Anonymous (4)

BENEFACTORS (\$250+)

- Lee Aaron
 Charles Adams
 Mary Beth & Aaron Adams
 M. Faith Angell & Kenneth Carobus
 Stephen & Domenick Angilletta
 Elizabeth A. Aros
 Arthur J. Gallagher Foundation
 Luana Aul
 Janice Baldwin
 Dr. & Mrs. Kenneth J. Basalik
 Maureen Beatty
 Chris Blaydon
 George Boehm
 Lois Bogdan
 Alexis Bove
 Ann Barr
 Lisa Boyell
 Paul & Brenda Branson
 Joyce Brody
 Jessica Brookstein
 Thomas F. Bizozowski
 Susan Bunch
 Royal Burnin
 Bob & Treva Burger
 Marilyn R. Burgin
 Judith Callan
 Charles & Dorothy Campbell
 Bob Canavan
 Dr. David & Ruth Capuzzi
 David Carey
 Edward & Dorothy Carter
 Nancy L. Cervino
 Dr. Howard Cetel
 Jack & Anne Childs
 Chubb Corporate Giving
 Vicki Chubb
 Vincent Cipriano
 Bonnie Cohen
 Robert & Deborah Cohen
 Dr. Todd & Wendi Cohen
 Jenny Connolly
 John & Marjorie Corbett
 Rosemarie Costantino
 Mary M. Creekmore
 Donald Crist
 Mr. & Mrs. Benjamin Cruz
 Sophie & Robert D'Agostino
 Anahita Deboo
 Dell Technologies
 Sharon A. Dennison
 Jim DiCarlo
 Pat & Joanne DiDonato
 David A. Dorsey
 Jacqueline Drewes
 Janet Driscoll
 Helen Dungan
 Richard Egan
 Barry Shapiro & Emma Burd
 William Evans
 Susan Eves
 Donald F. Federico
 Greg & Suzanne Fegley
 Beverley & Stewart Feinberg
 Bruce Fine
 Alexis Gerard Finger
 Ms. Ellen Slott Fisher
 Bill Flannery Automotive
 Kenneth & Cecile Frank
 Tong Ming Fu
 Stephen & Marian Galer
 Ann & Carl Gersbach
 Stephen Glaudel
 Fred & Sue Gordon
 Barry and Cindy Gould
 Irene Graham
 H. Barton Greenspan
 Benjamin & Mary Jane Griffith
 Douglas & Epiphany Grisbaum
 Linda Gussie
 Helen M. Hall
 Richard & Anne Harris
 Elizabeth Harrop & Ben Bond
 Peter Harsch
 Rev. William D. Hartman
 Nik Peter & Donna Hasselmo
 Emi C. Hawkey
 John H. & Nancy Hines III
 Sandra Horwitz
 Bob & Nan Huber
 Dr. & Mrs. Geza Incze,
 In Memory of Robert I. Incze
 Barbara Irwin
 Mark Branson & Jacqueline Meckwood
 Elton & Wendy-Anne Johnson
 In Memory of Anne Jones
 Chris & Marjorie Jones
 Nancy Jones
 JPMC Foundation
 Mrs. Sharla Kanovsky
 Bob & Sandy Kassel
 George Kelley
 John & Barbara Kelly
 Thomas & Stephanie Kelly
 Theresa A. Kerlin
 Alyson Kessler
 Marilyn Kirshbaum
 Colleen Klingelhofer
 Beverly A. Kovac
 Vivienne & Charles Kramer
 George & Patricia Kroclicek
 Erika Kurtz
 Charles & Lucinda Landreth
 Earl W. Laney
 John & Kellen Lavallen
 Andrew & Julia Leader-Smith
 Holly Lentz
 John & Daniela Leone
 Harry & Carol Leopold
 Mr. & Mrs. Ted & Marilyn Lotz
 Dan & Doug Ludwig
 Eric & Rebecca Lynch
 Jill & Michael Magerman
 G. Bruce Mainland
 Joseph Maloney & Genevieve Haldeeman
 Jeffrey Czarnicki & Mark Vitvits
 Judith Marini
 Vincent Massimiano
 Richard & Kathleen Mayberry
 James & Patricia Mayhew
 Charitable Fund, a Donor
 Advised Fund of U.S.
 Charitable Gift Trust

BENEFACTORS, continued

Steve & Cynthia Mazda	Nancy Nolan	Dr. & Mrs. Melvyn Richter	Donna & Jerry Slipakoff	Melvin Lee & Stephen Walker
Philip & Patricia McAloon	Suzanne & Jules Olita	Anne Rigney	Patrick & Donna Smith	Jeff Walsh & Mark Klingensmith
Rita A. McBride	David Orouke	Christine L. Rossett	Maryrose Smocek	John & JoAnn Walsh
Jim McCafferty	Joan & Paul Ostraff	Leonard Rossio	Leonard & Steven Snyder	Michelle Weinstock
Maren McKay	Carol Otte	Mary Ryan	John & Catherine Solari	Llew Werley, Jr.
Dr. Dorothy McMullen	Robert Overell	Warren Rybak	John & Christine Sommer	Wayne & Paula Davis West
Joseph & Tina McSorley	Thomas & Elizabeth Pack	John & Peggy Sabo	Diane Sozio	Mark Wheeler
Kimberly Mehle	Susan Peck	Josephine A. Sassano	Paul & Judy Stavrakos	Mr. & Mrs. Howard White
Elizabeth & Allen Meyer	Mr. David B. Penske	Reiko Sato	David Stickley	Thomas Wholey
Antonino & Antoinette Micela	Linda Penza	Erin Schneider	Gregory & Marlena Stratoti	Ann J. Williams
Jennifer Miley	Mr. & Mrs. Steven B. Pinsky	Gail Scoufield	Donald C. & Jane Tantum	Denise Wisneski
Arthur P. & Marjorie L. Miller	Frank Pittner	William & Nancy Seibert Jr.	Charles F. Tarr & Roy Ziegler	Sandra Zaronansky
Justin Molina	Charles & Marge Plock	Claire Service	Lynn Teller	Susan & Kevin B. Zebrowski
Patricia M. Moore	Mary Prychka	Deborah Sesok-Pizzini	Jan Toke	Maryann Ziembra
Lawrence & Susan Morgan	Sherry Ratajczak	Regan Sheffler	Anne & Richard Umbrecht	Anonymous
Margaret & Mark Morgan	Linda Reedy	Ira Siegal	Sarah & John Van Buren	
Gerry & Brenda Mullane	Matthew D. & Rhoda Refsin	Kathleen Siegl	Bill Vargus	
James J. Nolan	Virginia L. Reinhardt	Anne & Peter Silverberg	Margot Waitz & Gordon Manin	

PLATINUM STAR VOLUNTEERS

Laurie & Alyssa Altmark	Barry Shapiro & Emma Burd	Maryanne Giampapa	Dirk MacAlpine &	Nancy Mayer
Monty & Cindy Anderson	Jim DiCarlo	Mimi Hawn	Virginia Durham	Mrs. Kim Nurick
Carol E. Brown				Eileen Wojnar

POP REED LEGACY SOCIETY

The Pop Reed Legacy Society recognizes individuals who have made provisions for Walnut Street Theatre through a planned gift. Because of their commitment to keeping our flame eternal, we know that our legacy will burn bright for future generations of audiences, artists, and students alike.

Anastasius and Anastasia Bandy*	Harold Farrey*	Bernard Havard &	Miranda Markart	Mark D. Sylvester
Bruce Belzak	Rhoda & Louis Fryman	Judy Capuzzi Havard	Jean Prewitt*	Thomas C. Wiernicki*
John J. Burns*	Bruce & Terri Goldberg	George L. James III*	Kevin & Jane* Roach	
Joseph & Suzanne Calabro	John & Liz Gontarz	Don & Diane Kolodziejski	Dr. Harry Rosenthal	*Deceased
George Chamberlain	Sylvia Green*	Carol Lange	Rebekah Sassi	
Jeremy Edgecliffe-Johnson	Gary Grob*	Lloyd Lewis*	Martin Spector	

CAPITAL CAMPAIGN

In acknowledgement of contributions made to *The Future Lives Here Expansion Project*, Walnut Street Theatre is humbled to thank the following donors of \$250+.

George J. Ahern	Sean & Amy Fahey	Alicia & John Hlywak	Arthur P. & Marjorie L. Miller	Camryn J. Schultheis
Arthur Murray International, Inc.	Jeff & Janie Ferro	Denise D. Hodgson	John W. Mills	Kathy & Don Shannon
Mr. & Mrs. John Ash	Dr. & Mrs. William G. Field	John & Eileen Hogan	Mr. & Mrs. Francis J. Mirabella	Dick & Maria Shroy
Dave & Bill Bailey	Rhoda & Louis Fryman	Tom & Paula Hollencamp	Richard A. Mitchell	Adam & Christine Sigal
Andrew and Melissa Baumbach	Matt Garfield	Bruce & Alice Hudson	Steven & Deborah Mongiardo	Jon C. & Karen P. Sirin
David S. Blum &	Jack & Ellie Garfinkle	Mr. & Mrs. Huphoeliewicz	David & Lyn Montgomery	Syde Hurdus Foundation
Mark B. Woodland	Dr. & Mrs. Robert J. Geller	Kathy & Dave Hychalk	Robert Basile & Marie Mooney	The Arcadia Foundation
Tom & Amy Bohner	Michele M. Gendron	In Memory of Jane Lydan Kappel	Drs. Jonni & Roger Moore	The Fox Foundation,
Dolores & Ronald Bowlan	George Boehm	Catharine Keim	Mrs. and Mr. Margaret & Mark	In Memory of Rex & Carol Fox
Mr. & Mrs. Warren Brandies	Gail & Samuel Goldstein	Kent Family	Morgan	The Otto Haas Charitable Trust
Drs. Lee & Ellen Brooks	Janis Goodman	Alan & Henrietta Kiel	Maria & Steve Needles	Charles & Clarice Thum
Drs. James Byers &	Mackenzie & Joshua Gross	Walter Kissel	Lynn & Cherie Oakes	Robert & Cheryl Traub
Stephanie Chuipek	Patrick & Shelly Guise	Carol & John Little	Pennsylvania Lumbermens	Meryl Udel & Kelci
Dr. & Mrs. David Capuzzi	Ramona Gwynn	Stephen E. Lore	Mutual Insurance Company	Todd & Barbara Vanett
Natalie Caruso	Guy Hackney	Mr. & Mrs. Ted Lotz	Daniel W. & Chieeng K. Pritchard	Mr. & Mrs. Mickey Velpe
Dr. Todd & Wendy Cohen	Helen M. Hall	Debbie & Elliott Maser	PNC Bank	Margaret & Rick Valpe
Olympia Colasante	Tom & Rosemary Hampton	Philip & Marjorie Masters	Philip & Diana Racobaldo	Timothy & Leora Wile
Sally & Tom Coultas	Bob & Louise Harman	Patricia & Philip McAloon	Scott & Sharon Rankin	Richard Woosnam
Charles J. Denny	William D. Hart	Dr. Donald McGuigan, D.D.S.	Earl & Felicia Rehmann	Maryann Ziembra
Gary & Marlene Dworkin	Bernard Havard &	Michael & Deborah McKee	Kevin & Jane Roach	Anonymous (6)
Beverly S. Emanuel	Judy Capuzzi Havard	Louis and Bessie Stein	Dolly Beechman Schnall	
Jeff & Lyn Evans	Gillian Herschman	Foundation Fund #2	Keith Schneek	

Contributions made to Walnut Street Theatre between January 1, 2022, and February 16, 2023; additional supporters are gratefully acknowledged online at walnutstreettheatre.org/support. Every effort has been made to ensure this is a complete list; if your name is listed incorrectly, please contact the Development Office at 215-574-3580



Decidedly Different. Decidedly Engaging.

You've worked hard for these carefree days and now it's time to enjoy them. A day at our continuing care retirement community might include a session in the floral design studio, a book discussion group, or a game of pickleball. Plus, Philadelphia's cultural resources are close at hand. There's always something interesting to do at Dunwoody Village. Contact us today to find out more.



**A Continuing Care
Retirement Community**

★★★★★
Five-Star Rated Healthcare

(610) 359-4400 | www.dunwoody.org

3500 West Chester Pike • Newtown Square, PA 19073-4168

Independent Living • Rehabilitation • Personal Care • Skilled Nursing • Memory Support • Home Care

