

# PLAYBILL®

 WALNUT STREET THEATRE  
PHILADELPHIA, PENNSYLVANIA

## NOËL COWARD'S BLITHE SPIRIT





FOUNDED 1808

AMERICA'S OLDEST THEATRE – PHILADELPHIA'S MOST POPULAR THEATRE COMPANY

# WALNUT STREET THEATRE

825 WALNUT STREET • PHILADELPHIA, PA 19107

Dear Theatregoer,

Welcome back to the Walnut! I am so glad to have you as our guest for our delightful Mainstage season finale, Noël Coward's *Blithe Spirit*.

We are excited to have our 214th anniversary season set – and on sale now exclusively to current and new subscribers. We'll begin with our highly anticipated production of **ROCKY, THE MUSICAL!** Based on the Academy Award-winning film, *Rocky* follows Philadelphia's favorite underdog as he becomes our heavyweight champion in this epic story of love and grit.

Next, make the holiday season even more magical with **Rodgers & Hammerstein's CINDERELLA**. One of the most beloved love stories of all time comes to the stage with Rodgers & Hammerstein's classic songs, including "In My Own Little Corner," "Impossible/It's Possible," and "Ten Minutes Ago." Our production of this timeless, enchanting story is guaranteed to be brimming with theatrical magic.

In January, the season will continue with **LAST OF THE RED HOT LOVERS**. In this classic Neil Simon comedy, three unique romantic encounters go hilariously awry. Audiences are sure to be laughing from start to finish during this madcap, romantic romp.

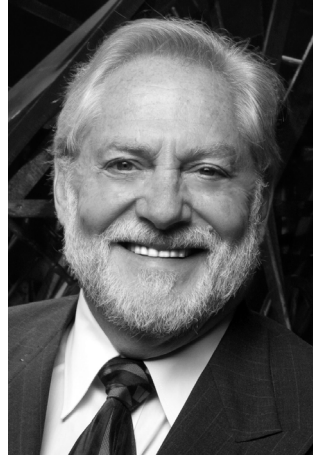
Then, we will bring to the stage Tennessee Williams' Pulitzer Prize-winning masterpiece, **CAT ON A HOT TIN ROOF**. In the sweltering Mississippi Delta, family tensions reach a boiling point during a birthday celebration. As a hot summer evening unfolds, the veneer of Southern gentility slips away, and long-hidden truths emerge.

We'll end the 2022-23 season with **Jimmy Buffett's ESCAPE TO MARGARITAVILLE**, a heart-warming musical comedy about a carefree bartender who gets swept off his feet by a charming tourist. With original songs and well-loved Jimmy Buffett classics, including "It's Five O'Clock Somewhere," "Cheeseburger in Paradise," and more, *Escape to Margaritaville* is a tropical get-away not to be missed!

Thank you for being a part of another wonderful season. I look forward to welcoming you back in the fall for our 214th anniversary season!

Sincerely,

Bernard Havard, President and Producing Artistic Director





FOUNDED 1808

AMERICA'S OLDEST THEATRE – PHILADELPHIA'S MOST POPULAR THEATRE COMPANY

# WALNUT STREET THEATRE

825 WALNUT STREET • PHILADELPHIA, PA 19107

**BERNARD HAVARD**

President and Producing Artistic Director

May 31 – July 3, 2022

## NOËL COWARD'S **BLITHE SPIRIT**

Set Design  
**ROMAN TATAROWICZ**

Costume Design  
**MARY FOLINO**

Lighting Design  
**SHON CAUSER**

Sound Design  
**CHRISTOPHER  
COLUCCI**

Wig Design  
**THE WIG ASSOCIATES**

Director of Production  
**SIOBHÁN RUANE**

Stage Managers  
**ELIZABETH HAROIAN  
MATTHEW LUPPINO**

Associate Artistic Director  
**BRIAN KURTAS**

Directed by  
**BERNARD HAVARD**

SPONSORED BY



**HERMAN GOLDNER CO., INC.**  
MECHANICAL CONSTRUCTION & SERVICE

ARTIST SPONSOR

**NOËL COWARD**  
FOUNDATION  
•••

First presented by HM Tennent Ltd. and John C Wilson at the Opera House, Manchester on June 16, 1941 (the following week the company played at Leeds); subsequently presented at the Piccadilly Theatre, London on July 2, 1941; transferred to the St James Theatre on March 23, 1942 and then to the Duchess Theatre on October 6, 1942 (1,997 performances).

**MARK D. SYLVESTER**  
Managing Director

Director of  
Development  
**REGINA SUKANICK**

Director of  
Education  
**T.J. SOKSO**

Director of Marketing  
and Public Relations  
**ED GILCHRIST**

---

---

# CAST

(in order of appearance)

Edith .....	AMANDA JILL ROBINSON*
Ruth Condomine .....	KAREN PEAKES*
Charles Condomine .....	IAN MERRILL PEAKES*
Doctor Bradman .....	SCOTT LANGDON*
Mrs. Bradman .....	SUSAN RILEY STEVENS*
Madame Arcati .....	MARY MARTELLO*
Elvira .....	ALICIA ROPER*

## UNDERSTUDIES

ELIZABETH BALL (Madame Arcati), JOHNNY FERNANDEZ (Charles Condomine), HEATHER PLANK (Mrs. Bradman), MATT RYDZEWSKI (Dr. Bradman), SERAINA SCHOTTLAND (Edith), PARKER SERA (Ruth Condomine), SAMANTHA SIMPSON (Elvira)

\* The Actors and Stage Managers employed in this production are members of Actors' Equity Association, the theatre union of Professional Actors and Stage Managers in the United States.

The videotaping or other video or audio recording of this production is strictly prohibited.

Artwork by Michael Voll © 2021

BLITHE SPIRIT © NC Aventales AG 1941  
Copyright agent: Alan Brodie Representation Ltd.  
[www.alanbrodie.com](http://www.alanbrodie.com)

---

**SETTING:** Charles Condomine's house in Kent

*There will be one 20-minute intermission, between Scenes 1 & 2 in ACT II*

### ACT I

**Scene 1** – Before dinner on a summer evening.

**Scene 2** – After dinner.

### ACT II

**Scene 1** – The next morning.

**Scene 2** – Late the following afternoon.

**Scene 3** – Early evening. A few days later.

### ACT III

**Scene 1** – After dinner. A few days later.

**Scene 2** – Several hours later.

---

---

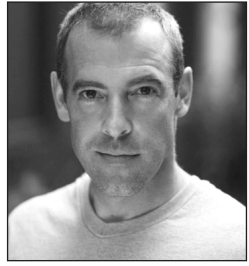
# CAST



**Scott Langdon**



**Mary Martello**



**Ian Merrill Peakes**



**Karen Peakes**



**Amanda Jill Robinson**



**Alicia Roper**



**Susan Riley Stevens**

---

---

# WHO'S WHO IN THE CAST

**SCOTT LANGDON** (Dr. Bradman) is extremely grateful to return to the Walnut stage! Some WST favs: *I Love a Piano* (Alex); *The Music Man* (Charlie Cowell); *Love Story: The Musical* (Dr. Ackerman); *Wizard of Oz* (Uncle Henry/Guard). Regional Fav: *Spamalot* (Arthur); *Oliver!* (Fagin); *1776* (John Adams); *The Who's Tommy* (Uncle Ernie); *Grand Hotel* (Otto). Voice sound familiar? Check out [GodAnAutobiography.com/podcast](http://GodAnAutobiography.com/podcast) and find out! Thanks to Bernard and Mark. Love to Mikaela and Connor, and his wife, Sarah.

**MARY MARTELLO** (Madame Acarti) Over 30 shows at WST including; *Young Frankenstein*, *Annie*, *The Humans*, *9 to 5*, *Memphis*, *Sister Act*, et.al. Arden: *Into The Woods*, *Sweeney Todd*, *Assassins*, *Gypsy*, et.al. Many shows at 1812, Wilma, Lantern, DTC, Interact, PLTC, and PTC as a member of the Philadelphia theatre community for over 20 years. Thanks to Bernard, the WST staff, and this wonderful ensemble of artists. Grateful to be back!

**IAN MERRILL PEAKES** (Charles Condomine) 13th Walnut show (*The Adventure of the Speckled Band*, *A Woman of No Importance*, *The Curious Incident of the Dog in the Night-time*, *Matilda*, *Ideal Husband*, *Of Mice and Men*, etc.) and 134th professional production. Two Best of Denver Awards, nominated for seven Barrymores (won 3), four Helen Hayes Awards (won 1) and winner of the 2003 F. Otto Haas Award. Proud Philadelphia actor. For Karen and Owen.

**KAREN PEAKES** (Ruth Condomine) WST credits: *The Adventure of the Speckled Band*, *A Woman of No Importance*, *The Curious Incident*.. *Night-Time*, *Comedy of Tenors*, *Fallen Angels*, *Of Mice and Men*, *Doubt*, and *Last of the Red Hot Lovers*. Other Philly theatres and Regional theatres: The Arden, People's Light, Act II Playhouse, InterAct, Delaware Theatre, PTC, 1812, The Wilma, The Peterborough Players, and The Folger Theatre. She is an Audie Award nominated audiobook narrator, happy to be back onstage with her husband, and proud mom to son, Owen.

**AMANDA JILL ROBINSON** (Edith) is a theatre/visual artist, musician, and composer. She is half of the joyful comedy duo, Ruth and Estelle, and a founding member of The Greenfield Collective. Walnut: *The Gifts of the Magi*; *Winter Wonderettes*; *A Child's Christmas*

*in Wales*. Regional: 1812; Act II; EgoPo Classic Theater; Philadelphia Artists' Collective; Delaware Shakespeare; Theater at Monmouth. Delighted to be sharing stories and laughter again! Love to my wonderful wife, Emily. [amandajillrobinson.com](http://amandajillrobinson.com)

**ALICIA ROPER** (Elvira) is so happy to be back! Previously at WST: *A Woman of No Importance*, *The Curious Incident of the Dog in the Night-Time*, *Beautiful Boy*, *Enchanted April*, *The Constant Wife*, and *The Philadelphia Story*. Also: Broadway, Off-Off-Broadway, Mark Taper Forum, Seattle Children's Theatre, Two River Theatre, George St. Playhouse, Yale Rep, & Cleveland Playhouse. Teacher at UArts. MFA: Yale School of Drama. Love to Rob, Max, & Josh.

**SUSAN RILEY STEVENS** (Mrs. Bradman) Walnut: *The Curious Incident of the Dog in the Night-Time*, *Noises Off*, *Fallen Angels*, *God of Carnage*, *A Streetcar Named Desire*. Regional: 1812 Productions, PA Shakespeare Festival, People's Light, Act II Playhouse, Actors Theatre of Louisville, Dallas Theatre Center, Portland Stage Company, and Asolo Repertory Theatre. M.F.A.; Yale School of Drama. Welcome back to the Walnut and live theatre!

**NOËL COWARD** (Playwright) Born in 1899 in Teddington, England, Noël Coward maintained an illustrious and multifaceted career as actor, director, producer, playwright, songwriter, cabaret artist and author. Following his first adult role, in *Charley's Aunt*, and the writing of his first song, "Forbidden Fruit" in 1915, he went on to produce and star in many of his hit plays and musicals, including *The Vortex*, *Hay Fever*, *Bitter Sweet*, *Private Lives*, *Design for Living*, *Tonight at 8:30*, *Present Laughter*, *This Happy Breed*, *Sail Away and Suite in Three Keys*. His film work includes *Cavalcade* (Academy Award, Best Picture), *In Which We Serve*, *Brief Encounter* and *The Scoundrel*. He published the books *A Withered Nosegay*, *To Step Aside* (a collection of short stories), *Pomp and Circumstance* (a novel) and his two-part autobiography, *Present Indicative* and *Future Indefinite*. Coward was knighted in 1970.

**BERNARD HAVARD** (Director) It's amazing that Noël Coward wrote *Blithe Spirit* in 1941, in spite of the world's problems then. Similarly, this wonderful company of actors will transport you to a world of whimsy and

---

---

# WHO'S WHO

humor. Bernard's directing credits include Oscar Wilde's *A Woman of No Importance*, Stephen Karam's *The Humans*, David Lindsay-Abaire's *Good People*, Yasmina Reza's *God of Carnage* and *Art*, *Someone Who'll Watch Over Me*, *Skylight*, *A Life in the Theatre*. Love to J and B. For Bernard's complete bio, please visit [Walnutstreettheatre.org](http://Walnutstreettheatre.org).

**ROMAN TATAROWICZ** (Set Design) Walnut: *The Best Man*, *A Woman of No Importance*, *The Curious Incident...*, *The Humans*, *Thurgood*, *Oleanna*, *Meteor Shower*, *Souvenir*, *Jerry's Girls*, *The Other Place*, *Red*, *I Love a Piano*. Selected Off-B'way: *The Banana Monologues* (Acorn Theatre); *Honky*, *Roses in December* (Urban Stages); *Mother Courage*, *The Importance of Being Earnest*, *Dames at Sea*, *The Threepenny Opera* (Jean Cocteau Rep.). Many Off-Off-B'way including *Bee-Luther-Hatchee* (Audelco Award nom). Regional credits: Capital Rep., Merrimack Rep., Queens Theatre in the Park, Florida Studio Theatre, Azuka Theatre, Act II, InterAct, Bristol Riverside, People's Light, Pa. Shakespeare Festival, ETC (Santa Barbara) and the recent *Million Dollar Quartet* (Delaware Theatre Company). Member United Scenic Artists Local 829. [tatarowicz.com](http://tatarowicz.com)

**MARY FOLINO** (Costume Design) is currently Arcadia University's Costume Shop Manager, having previously worked as the Walnut's Costume Shop Manager, and as the Costume Director of the Milwaukee Repertory Theater. Favorite WST designs include *Holiday Inn*, *A Comedy of Tenors*, *Young Frankenstein*, *Shrek*, *A Woman of No Importance*, *Beehive*, and *The Little Mermaid*. Many thanks to Bernard and the WST family, all of my collaborators on this piece, and the amazing costume and wardrobe staff!

**WILL VICARI** (Wig Design) BFA in Hair and Makeup Design from The Conservatory of Theatre Arts at Webster University. Co-owner of The Wig Associates with Krystal Balleza. Select credits: hair department of *The Phantom of the Opera* (Broadway); Hair and Makeup Supervisor for *King Kong* (Broadway), *Plaza Suite* (Boston/Broadway), and *Soft Power* (The Public). Building and styling for *Wicked* and *My Fair Lady* (Broadway/Tour); *The Minutes*, *The Rose Tattoo*, *The Great Society* (Broadway); and *Rock of Ages* (Off Broadway). Web: [WigAssociates.com](http://WigAssociates.com) Insta: [@thewigassociates](https://www.instagram.com/thewigassociates)

**KRYSTAL BALLEZA** (Wig Design) From Texas, Krystal graduated in 2019 with her BFA in Hair and Makeup Design with a minor in Psychology, and now co-owns The Wig Associates in NJ with Will Vicari. Hair and Makeup Supervisor for *Fabulation* (Signature Theater), *Toni Stone* (Roundabout), *High Button Shoes* (City Center Encores), *Merrywives* (The Public Theater) and *Slave Play* (Broadway). Assistant Hair Supervisor for *The Phantom of the Opera* (Broadway). Currently Hair and Makeup Supervisor for *Tina: The Tina Turner Musical*. Web: [wigassociates.com](http://wigassociates.com) Insta: [@thewigassociates](https://www.instagram.com/thewigassociates)

**SHON CAUSER** (Lighting Designer) Walnut credits: *A Woman of No Importance*, *A Comedy of Tenors*, *The Humans*, *Kate*, *Arsenic and Old Lace*, *God of Carnage*, *Good People*, *Driving Miss Daisy*, *Elf*, *Love Story*, *Jerry's Girls*, *It's a Wonderful Life*, *Shipwrecked!*, *Plaid Tidings*, *Glass Menagerie*, *Vivian*, *Greater Tuna*, *The Mystery of Irma Vep*. Regional credits: Lantern Theater, Fulton Theater, 1812 Productions, Inis Nua, Theatre Horizon, Delaware Theater Company, Maples Rep, Boise Contemporary Theater. M.F.A., Lighting Design, Temple. Thanks: Bernard, Mark, Siobhan, and the whole Walnut family. Love to Christine.

**CHRISTOPHER COLUCCI** (Sound Design) Recent work: 1812 Productions *Two Outta Three*; For the Lantern Theater Company's Digital Season - sound design and music for *The Gospel According to...*, *The Plague*, and *A Christmas Carol* as well as video design for InterAct's *The Chinese Lady*. In August, Christopher attended the International Freedom Theater Festival in Narva, Estonia. 2016 Pew Fellowship in the Arts. BA, Philosophy/Theology - Eastern University. MA, Philosophy - Western Kentucky University. 8 Barrymore Awards for Outstanding Original Music and Sound Design. Independence Fellowship in the Arts (2012, 2019). Soundcloud (<https://soundcloud.com/cmsound>) YouTube (<https://tinyurl.com/yd89tm64>) Instagram [@cmcolucci](https://www.instagram.com/cmcolucci)

**ELIZABETH HAROIAN** (Stage Manager) is thrilled to be joining WST again. Stage management credits include *Further Than the Furthest Thing* (NYU Tisch), *Symphonic Fantastique* (Basil Twist), *The Pirate La Dee Da* (ATC), *The Secret Garden* and *Sister Act* (NYU Steinhardt), *Grease* (New London Barn Playhouse), and *Richard III* (Juilliard). This past fall, Liz was in Saudi

---

---

# WHO'S WHO

Arabia managing a truly magical show with five international illusionists. She's worked with many academic programs including NYU Tisch, The Juilliard School, NYU Steinhardt, Atlantic, and ART/Harvard. Most recently you saw her work on *Speckled Band* and *Always...Patsy Cline*. Amid all of the chaos remember to have fun!

**MATTHEW LUPPINO** (Stage Manager) Matthew is thrilled to be making his WST debut! Broadway: *Bandstand*, *The Illusionists: Turn of the Century* & *Live on Broadway*. Additional NYC: The Public Theatre, The Pearl Theatre Company, The Flea. Touring: *Apollo 11 – The Live Show*; *The Lightning Thief* (TheatreWorks/USA). Select Regional: People's Light, Montana Repertory Theatre, Geva Theatre Center, Hangar Theatre, Kitchen Theatre Company, 3 seasons with Shakespeare & Company, and Barrington Stage Company. Matthew is an alum of The College of New Jersey and a proud member of Actors' Equity Association.

**SIOBHÁN RUANE** (Director of Production) This is Siobhán's ninth season at the Walnut. With over 20 years in the business, Siobhán has worked internationally as a Production Manager and Stage Manager. Previously, Siobhán held the faculty position of Stage Management Advisor at Florida State University's School of Theatre. Additional credits include Cirque du Soleil, Norwegian Cruise Line, Cirque Productions, and various regional theatres. Siobhán holds an undergraduate degree from Rutgers University, an MFA from the University of Delaware, and is (proudly!) originally from the Jersey Shore.

**BRIAN KURTAS** (Associate Artistic Director) has been associated with the Walnut Street Theatre since 2007. He began his career here as a performer and in the professional apprenticeship program and has since dedicated himself to bringing artists together. He has served the Walnut's artists and audiences in various capacities of casting, programming, and literary, and aims to continue identifying the highest quality of artists for our historic theatre and community. His vision behind unforgettable live experiences and storytelling has become a creative solution from the stage to the screen. He spent three years as the Executive Producer of Gretna Theatre, has serviced television networks and films including TLC and HGTV, and been a creative behind brands such as T-Mobile, Expedia, and Walmart. Originally from Lancaster, Brian is a proud Temple

alum and a member of the Casting Society of America.

**MARK D. SYLVESTER** (Managing Director) Mark is proud to be celebrating his 28th season at the Walnut. His extensive career has spanned Summer Stock to Broadway as an actor, stage manager, box office treasurer, theatre manager, marketing and public relations director and general manager. After several years working with commercial theatre, he has devoted his career to non-profit theatre companies since 1987. To date, Mark has been associated with more than 450 stage productions. An avid collector of musical theatre recordings, his collection contains over 3,000 cast albums from around the world. Widely regarded as a theatrical marketing expert, Mark lectures and consults with organizations internationally. He has served on several boards including seven years with the National Alliance for Musical Theatre where he now holds the honorary position of Board Emeritus and the Advisory Committee of Samuel French, the international play publisher and licensing company. With Bernard Havard he co-authored the book *Walnut Street Theatre*. Since he joined the Walnut in 1994 it has become the most subscribed theatre company in the world.

**BERNARD HAVARD** (President and Producing Artistic Director) *Vox Populi* (The Voice of the People) was written on the Walnut Playbills in the 1800s. Whenever the Walnut has strayed from a populist program, the theatre has gone bankrupt. When I came here 39 years ago, we had no programs and no audience. Today we enjoy the largest subscription of any theatre in the world. So, my thanks to our loyal audience and a warm welcome to newcomers who enjoy and believe in what we do. I have tremendous admiration for the artists who have dedicated their lives to the theatre and the Walnut, in particular. Our theatre is a non-profit 501-C3 institution, and we rely on contributed income to extend our reach into the community. Last season we reached more than 150,000 students in our city schools. We have 20 trustees who give their time, wisdom and contributions to help guide this historical treasure. I came to the Walnut in 1982, and I am as excited now about our future as I was in the beginning. My heartfelt thanks to all who enter this theatre. For my biography, go to About Us on our website at [WalnutStreetTheatre.org](http://WalnutStreetTheatre.org).



COMING ATTRACTIONS  
**AT THIS THEATRE!**

**MAINSTAGE**

Our 2022–23 Season includes

- *Rocky, the Musical*  
(starts Oct. 4, 2022)
- *Rodgers & Hammerstein's Cinderella*  
(starts Nov. 22, 2022)
- *Last of the Red Hot Lovers*  
(starts Jan. 10, 2023)
- *Cat on a Hot Tin Roof*  
(starts Feb. 14, 2023)
- *Jimmy Buffett's Escape to Margaritaville*  
(starts Mar. 28, 2023)

---

**WALNUT STREET  
THEATRE SCHOOL**

Classes for kids, teens, and adults!  
Contact us about our  
Summer 2022 semester.

**CAMP WALNUT 2022**

July – August, 2022  
Programs for ages 7-18.

Call 215-574-3550, ext. 510 or register  
online at [walnutstreettheatre.org](http://walnutstreettheatre.org)

---

Buy a subscription  
or individual tickets  
at **215-574-3550** (12pm–8pm),  
**WalnutStreetTheatre.org**  
or Ticketmaster.com,  
800-982-2787

Page 13

Advertising

**WALNUT STREET THEATRE**  
825 Walnut Street, 215-574-3550

**BOARD OF TRUSTEES**

**President**..... **Bernard Havard**  
**Chair**..... **Scott Rankin**  
**Immediate Past Chair**..... **Richard A. Mitchell, Esq.**  
**Chairman Emeritus**..... **Louis W. Fryman, Esq.**  
**Chairman Emeritus**..... **Matthew Garfield**  
**Chairman Emeritus**..... **John D. Graham**  
**Vice Chair/Secretary**..... **Ramona Gwynn**  
**Vice Chair**..... **Francis J. Mirabello, Esq.**  
**Treasurer**..... **Robert L.B. Harman**

David S. Blum  
Jeffrey Ferro  
Jack R. Garfinkle, Esq.  
Denise Daher Hodgson  
Audrey Merves  
Patrick Mullen

Tanya Ruley-Mayo  
Daniel J. Schuller  
Gene Schriver  
James D. Scully, Jr.  
Ellen Tobie

**ALUMNI TRUSTEES**

Thomas J. Coultres, Louis J. D'Ambrosio, Allan M. Dabrow,  
Joseph E. Ellis, Sr., Barry Genkin, Terry Graboyes,  
Jeremy D. Johnson, Kenneth E. Kirby, Ben Lipitz,  
Theresa E. Loscalzo, Esq., Craig R. MacQueen,  
Kyle Anne Midkiff, George W. Murphy, Ann Marie Richter,  
Renee H. Rollin, Keith D. Schneck, Martin W. Spector,  
James M. Tholey

**HONORARY MEMBERS**

Mr. Charles Fuller, Ms. Carole Haas Gravagno,  
Ms. Anne Jackson, Hon. Mark Squilla, Ms. Lily Tomlin

**WALNUT STREET THEATRE STAFF**

**ARTISTIC**

**President and Producing Artistic Director**..... **Bernard Havard**  
**Associate Artistic Director**..... **Brian Kurtas**

**ADMINISTRATION**

**Managing Director** ..... **Mark D. Sylvester**  
**Company Manager** ..... **Daniel Ludwig**  
**Controller** ..... **Michael S. Armento**  
**Assistant to the Controller** ..... **Siona Grika**  
**Management Assistant** ..... **Kristen Lamb**  
**Audience Services Manager**..... **Angelia Evans**  
**Assistant Audience Services Manager**..... **Katrina Dagenais**  
**Audience Services** ..... **DeLisa Williams**  
**Facilities Manager**..... **Bruce Myers**  
**Assistant to the Facilities Manager**..... **Tony Sample**  
**Facility Services** ..... **Joseph Bell, Demetrius Hill,**  
**Camielle Johnson, Jonathan Martin,**  
**Jacquelyn Matthews, Sabrina McDowell,**  
**Victoria Robinson, Robin Trammel**  
**COVID-19 Safety Manager** ..... **Sarah Dewey**

**DEVELOPMENT**

**Director of Development**..... **Regina Sukanick**  
**Assistant Director of Development**..... **Joy Karsner**  
**Development Associate**..... **Sharon Hoffberg**  
**Development Apprentice**..... **Nora Gair**

**EDUCATION**

**Director of Education** ..... **T.J. Sokso**  
**Assistant Director of Education**..... **Amanda Pasquini**  
**Education Apprentice**..... **Joshua Hillard**  
**Teaching Artists**..... **Hasani Allen, Julianna Babb,**  
**Hallie Berger, Damon Bonetti, Jared Calhoun,**  
**Andrea Rose Cardoni, Hannah Catanoso,**  
**Sean Close, Walter Dodd, Devon Duffy,**

**Nora Gair, Sharon Geller, Micaela Hickey, Brian Kurtas,**  
**Donovan Lockett, Drucie McDaniel, Taylor J. Mitchell,**  
**Charlotte Northeast, Dana Orange, Domenica Passio,**  
**David Pica, Susan Riley Stevens, Manny Rimmer,**  
**Faith Sacher, Leah Senseney, Devon Sinclair,**  
**Grant Uhle, Alexa Wilder, Marissa Wolner, Greg Wood**

**MARKETING**

**Director of Marketing and Public Relations**..... **Ed Gilchrist**  
**Communications and**  
**Audience Engagement Manager** ..... **Mike Hogue**  
**Marketing Associate** ..... **John Parkinson**  
**Box Office Treasurer**..... **Rick Dougherty**  
**Assistant Box Office Treasurer** ..... **Tom Brzozowski**  
**Ticketing Services Manager**..... **Jeffrey Berry**  
**Ticketing Service Agents**..... **Aaron Blandino,**  
**Cynara Cherry-Cary, Ceteris Doran,**  
**Chris LeVere, Kelly McCreery,**  
**Mia Nicolai, Joan Rittberg,**  
**Sonja Stornes, Christina Talau,**  
**Madison Williams**  
**Outbound Sales and Telefunding**..... **Anne Marie Borget,**  
**Nassem El, Lauren Townsend,**  
**Rob Waldman**

**PRODUCTION**

**Director of Production** ..... **Siobhán Ruane**  
**Assistant Production Manager** ..... **Megan Lampron**  
**Production Assistant**..... **Maya Chester-Ziv**  
**Production Consigliere**..... **Matt DeMascolo**  
**Stage Managers**..... **Matthew Luppino,**  
**Elizabeth Haroian**

**Technical Director**..... **Brian Fronjian**

**Assistant Technical Director**..... **Eli Marsh**  
**Head Carpenter** ..... **Jon Wheeler**  
**Carpenters** ..... **Stuart Bartlett, Phil Effinger,**  
**Kerrin Frank, Zach Laska,**  
**Jeremy Webb**  
**Scenic Charge**..... **Leslie Curd**  
**Scenic Artists** ..... **Luca Bonnaci, Sarah Ganek,**  
**Thomasin Parnes, Lauren Sellers,**  
**Madeline Smith**

**Properties Manager**..... **Greer Duckworth, Chris Haig**

**Properties Associate** ..... **Leighann Westermeyer**  
**Head Properties Artisan**..... **Natalie Reichman**  
**Properties Artisans**..... **Nicole Artale, Davis Caramanico,**  
**Del Hanson, Hunter Wengersky**

**Costume Shop Manager**..... **Natalia de la Torre**

**Assistant Costume Shop Manager**..... **Anya Loverdi**  
**Draper and Costume Associate** ..... **Chloe Swidler**  
**Draper** ..... **Sarah Mitchell**  
**Costume Apprentice**..... **Alison Jones**  
**Stitcher**..... **Francesca Martin, Kelly Myers**  
**Wig Designer**..... **The Wig Associates**  
**Makeup Designer**..... **Carissa Thortakson**  
**Wig and Make-Up Coordinator** ..... **Hannah Lunt**  
**Wig and Wardrobe Apprentice**..... **Anne Dwyer**  
**Lead Dresser**..... **Alison Levy**  
**Dressers**..... **Anne Dwyer, Hannah Lunt**  
**Costume Stock Coordinator**..... **Anna Sorrentino**

**Stage Crew**

**Head Carpenter** ..... **Mick Coughlan**  
**Head Electrician** ..... **Amber Faulhaber**  
**Head Flyman** ..... **David Cain**  
**Head Sound**..... **Adam Orseck**  
**Head Props**..... **Valerie Bannan**  
**Seasonal Assistant Sound**..... **Ryan Erlichman**  
**Seasonal Assistant Lighting**..... **Kathryn Morgan**



**Actors' Equity Association (AEA)**, founded in 1913, represents more than 45,000 actors and stage managers in the United States. Equity seeks to advance, promote and foster the art of live theatre as an essential component of our society. Equity negotiates wages and working conditions, providing a wide range of benefits for its members, including health and pension plans. AEA is a member of the AFL-CIO, and is affiliated with FIA, an international organization of performing unions. The Equity emblem is our mark of excellence. [actorsequity.org](http://actorsequity.org)



BACKSTAGE EMPLOYEES AND SCENE SHOP EMPLOYEES ARE REPRESENTED BY THE INTERNATIONAL ALLIANCE OF THEATRICAL STAGE EMPLOYEES. (I.A.T.S.E.)



UNITED SCENIC ARTISTS REPRESENTS DESIGNERS FOR THE AMERICAN THEATRE

## PROUD MEDIA PARTNERS FOR THE 2021–22 SEASON



6abc is Philly Proud and honored to support the work and mission of Walnut Street Theatre, the oldest theatre in America! What is Philly Proud? All across the Delaware and Lehigh Valleys, people of all ages are doing wonderful things to improve their communities, and to make life better for their neighbors and friends. Whether you're in Center City, the Jersey Shore, Wilmington, or the Poconos, 6abc Action News is committed to showcasing all these good works and wants you to be proud. Be Philly Proud!



Metro, Philadelphia's #1 newspaper, is proud to partner with Walnut Street Theatre, now in its 213th season, in supporting Philadelphia's artists and promoting art education in the local communities. Pick up Metro every Thursday for our Going Out section or read it online at [metro.us](http://metro.us).



The mission of the Walnut Street Theatre Company is to sustain the tradition of professional theatre and contribute to its future viability and vitality. It does so through the production and presentation of professional theatre; the encouragement, training and development of artists; the development of diverse audiences; and the preservation and chronicling of its theatre building, a National Historic Landmark.



Walnut Street Theatre is a member of the Greater Philadelphia Cultural Alliance, Citizens for the Arts in Pennsylvania, and the league of Historic American Theatres.



Independence  
STARTS HERE!

Walnut Street Theatre receives state arts funding support through a grant from the Pennsylvania Council on the Arts, a state agency funded by the Commonwealth of Pennsylvania.



VSA  
PENNSYLVANIA  
The State Organization  
on Arts and Disability

Walnut Street Theatre acknowledges with appreciation Bryce's Catering Company (Wynnewood, PA) for their elegant catering of theatre events.



ART · REACH

Accessibility Equipment, Training and Marketing provided by Independence Starts Here, the statewide cultural accessibility program of VSA PA/Amaryllis Theatre Co., jointly led in different regions in PA by cultural partners in that region. In Greater Philadelphia, Independence Starts Here is jointly led by Art-Reach, Inc.



"Back to the Show" Program is brought to you by PNC Arts Alive.

---

---

# THANKS TO OUR SUPPORTERS

Walnut Street Theatre wishes to express gratitude to the following individuals, corporations, foundations and government agencies for their contributions to America's Oldest Theatre.

## FORREST SOCIETY (\$25,000+)

Anonymous (4)**	Arthur Murray International, Inc.**	James & Marlene Scully, Jr.**
Aqua**	Philip and Margaret Masters**	The Shubert Foundation
The Arcadia Foundation**	Mr. & Mrs. Francis J. Mirabello**	Louis and Bessie Stein Foundation
Jeff & Janie Ferro**	Richard A. Mitchell**	Fund #2**
Matt Garfield**	David & Lyn Montgomery**	Syde Hurdus Foundation**
Janis Goodman**	Parx Casino	The Otto Haas Charitable Trust**
Ramona Gwynn**	PECO	Marge & Rick Volpe**
Bob & Louise Harman**	PNC Arts Alive	
Bernard Havard &	PNC Bank**	
Judy Capuzzi Havard**	Scott & Sharon Rankin**	

## BOOTH SOCIETY (\$10,000+)

David S. Blum & Mark B. Woodland**	Horace W. Goldsmith Foundation	Robert Basile & Marie Mooney**
Dolores & Ronald Bowlan**	The Hamilton Family Charitable Trust	Pennsylvania Council on the Arts
Drs. James Byers & Stephanie	Ken & Nancy Hellendall	Pennsylvania Lumbermens Mutual
Chuipek**	Denise D. Hodgson**	Insurance Company**
Disney Worldwide Services	Independence Foundation	Philadelphia Insurance Companies
Essential Utilities, Inc.	Russell Lamon Irrev through the PNC	Kathy & Don Shannon**
Rhoda & Louis Fryman**	Charitable Trusts Grant Review	Jon C. & Karen P. Sirlin**
Jack & Ellie Garfinkle**	Committee	
Herman Goldner Company	Maureen E. Molloy	

## BARRYMORE SOCIETY (\$5,000+)

Anonymous	Patrick & Shelly Guise**	Mr. & Mrs. Vincent Redes and Morgan
The Bohner Charitable Fund**	The Haley Foundation	Keith Schneck & Linda Chisholm**
C&N Bank	Independence Blue Cross	Roger & Kathi Smith
Daniel Comer	Mr. and Mrs. John and Janet Marsella Jr.	Rowland & Elaine Smith
The Peter and Audrey Denton Fund	Roberta Martin	Theatre Forward
Faegre Drinker Biddle & Reath LLP	John W. Mills**	Robert and Cheryl Traub**
Fox Rothschild LLP	Mr. & Mrs. Edward J. Mitchell	Mr. & Mrs. Mickey Velez**
Michael C. Friel	Patrick Moeller	Richard Woosnam**
GLOBO	Montgomery Family Charitable Fund	

## CUSHMAN SOCIETY (\$2,500+)

Anonymous	Charles W. Horn, III & Patrick M. Rumaker	Drs. Jonni & Roger Moore**
Paul M. & Mary Lee Anderson	Alan & Henrietta Kiel**	Stephen & Lucy Paccione
Jean Berg	Ken & Elaine Kirby	Ann & Lanny Patten
Louis N. Cassett Foundation	Walter Kissel**	Rev. Lucy Pierre
The Noel Coward Foundation	Ms. Mary H. Ladd	Richard Stafford
Sandy & Joanne D'Orazio	Ms. Abbie Lampe**	Jesse W. & B. Lois Stuart
Timothy and Jane Duffy	Jane A. Lane	Charles & Clarice Thum**
William Faris	Joseph & Peter Lomax	Dr. & Mrs. Alan and Edye Twer
Jane and David Galli	Paul J. Marcotte & Karen A. Brown	Meryl Udell & Kelci**
Tom & Rosemary Hampton**	Robert Peter Miller	Kimberly and Joseph Villani

## JEFFERSON SOCIETY (\$1,500+)

Anonymous (3)	Maria A. Feeley	Ginny & Gordon Lapinski	William R. Snell, Esq.
Susan Adamczyk	Rick & Julie Frost	Stephen E. Lore**	Martin & Cindy Spector
George J. Ahern**	Larry & Nancy George	Samuel P. Mandell Foundation	Dr. & Mrs. Frank Stearns
George & Nancy Brodie	Mr. and Mrs. James & Wendy Gerber	Andrew Masterman	Mr. Barry Stucker
Drs. Lee and Ellen Brooks**	Katherine M. Glaser	Robert Matcovich	Mr. & Mrs. Richard T. Taylor
Jessica and Jason Brown	Ron & Sandy Gould	Sandie Mather	Joseph & Marlene Testa
Michael J. & Alice L. Brown	Mr. & Mrs. John D. Graham	Jeanette & Richard Merion	Mr. & Mrs. Jim Tholey
Jeffrey & Diane Bush	Mr. George Hathaway	Mr. and Mrs. Joseph and Mary Miller	Lori & Robert Scott Uhl
William & Joann Butler	Kathryn S. Hayes & Victor J. Tortorelli	Steven & Deborah Mongiardo**	Frank & Fran Urso
Joseph Candelore & Angelina Gentile	James Herman, Esq. & Brenda Lee Eutsler, Esq.	Ruth & Jerry Mooney	Todd & Barbara Vanett**
Dr. David & Mrs. Ruth Capuzzi**	Alicia & John Hlywak**	Sean Morrissey	Beau & Valerie Walton
Bob & Cheryl Carfagno	Tom & Paula Hollencamp**	Mario & Rosemarie Nicolais	Mr. & Mrs. Paris Washington
Rodney Comegys	Mr. & Mrs. Lee Hudson	Mr. Joseph & Janeen Ostaszewski	Victoria Werth & Kevin Jon Williams
Virginia R. Cragg	Clara Huntzinger	Deborah Ott & Angel Macasieb	Eugene and Bess Wien
Kimberly & Walter Cwietniewicz	Kathy & Dave Hychalk**	Leo Pasholli	Timothy & Leora Wile**
Vic & Eva Dawson	Marcia & Ned Kaplin	Juanita & Pete Ricchiuti	Ruth Anne & David Woolsey
Dr. Charles & Mrs. Brenda Driben	Mr. and Mrs. Thomas and Angela Kay	Christopher & Jean Ritchie	
Drs. Bruce & Toby Eisenstein	Paul & Beth Koob	Mr. & Mrs. Robert K. Roush, Jr.	
Ruth Fausak		Ms. Joyce S. Sando	
		Mr. Roy Shubert	

## KEMBLE SOCIETY (\$1,000+)

Anonymous (2)	Sam Driban & Marilyn Neuhauser	Mr. Robert W. Jung	Kurt Reichert & Theresa Logan
Matthew & Megan Abbott	Gary & Marlene Dworkin**	Mary Kozar	Ann Robinson
Actors' Equity Foundation	Robert J. Eberle Jr.	Holly Krause & Family	Rita Rome
Mr. & Mrs. Raymond and Mary Alimenti	Jeff & Lyn Evans**	Beverly and Stephen Levin	Leonard M. Rosenfeld
Marylee & Stuart Alperin	Suzan Fine	Rosalie & Ben Lipitz	Stephen M. Sader
Dr. Sucha & Mr. Michael Asbell	Michelle Franklin	Mr. & Mrs. Ted Lotz**	Michael & Deanne Schiller
Emma Beckers	Ed & Vaia Gilchrist	Morton & Rhea Mandell	Dolly Beechman Schnall**
Janet, Dan & Jacob Boris	Gail & Samuel Goldstein**	Mr. & Mrs. Marchioli	Carl Schoenborn
Yvonne & Bruce Burgess	Stephen & Shirley Greenlee	Joseph & Rosemarie Matranga	Ellen Schwartz Siegel
Mr. & Mrs. Bransby and Margaret Bushey	Estate of Gary R. Grob	Patrick & Paula McGinley	Evelyn Scudder
Calabrese Charitable Fund — Mr. Christopher J. Calabrese and Mrs. Cathleen A. Calabrese	Peter Groverman	Don & Sue Miller in Memory of Lynda S. Flink	Maureen Colby Selby
Edward John Charlton & Grace Maria Spampinato	Irene M. Hallowell	Melanie Miller	Adam & Christine Sigal**
Dr. Todd & Wendy Cohen	Mr. & Mrs. John Hammer	Kenneth Morton	Rita A. Silvestri
Christopher Console	Ms. Linda Harvey	NJM Insurance Group	Dave & Chris Stanton
Drs. Michael B. Dabrow & Manette K. Fine	Gail L. Heinemeyer	Mr. & Mrs. R. Lynn Oakes**	Dom Stellato
Mr. & Mrs. William P. and Susan P. Degler	Lynda & David Herendeen	Thomas P. Obade, MD	Sherryl & Ted Strand
Joseph D'Orazio	Robert Hess & Frances Sherr	Mr. & Mrs. Stuart Ockman	Mark D. Sylvester
	Bill & Clare Higgins	Dr. Hayler H. Osborn	John & Barb Ungerman
	Mr. & Mrs. John R. Hogan**	Frank & Anne Palopoli	Dr. & Mrs. Anthony W. Villare
	Bruce & Alice Hudson**	Parsonage Family	Marion M. Walter
	Robert & June Hudson	L. Stephan & Rochelle Perchick	Debbie & Ron Wolf
	Richard and Becky Hunt	Daniel W. & Chieeng K. Pitchford**	
	Mr. Richard B. Johnson	Marcia & Don Pizer	
	James T. Johnston, Sr.		

## PRODUCING ANGELS (\$500+)

- Anonymous (4)  
Gerry Abelson & June Idzal  
Dr. Randy Ackerman &  
Dr. Donna Churlin  
Daryl Albury  
In Memory of Dr. Charles M.  
Alexander  
Jacqueline Axilbund  
Dave and Bill Bailey\*\*  
Janice Baldwin  
Rena & Sam Barnett  
Mary R. Barry  
Bruce C. Belzak  
The Biles Family  
Barbara & Brian Binney  
Amy Bohner  
Bolinski Consulting, LLC  
John & Linda Braceland  
Mr. & Mrs. Warren  
Brandies\*\*  
David & Janet Breskman  
Mr. & Mrs. Thomas E.  
Brightman  
Donna Britt  
Carol E. Brown  
Mary and James Brown  
Mr. Anthony Bruno  
Marilyn R. Burgin\*\*  
Mr. & Mrs. Christopher Burks  
Mrs. Kathryn G. Carlson  
Natalie Caruso\*\*  
Vincent Caruso  
Ms. Susan Casey\*\*  
Ms. Lynn Cavill  
Marcella Chartrand  
George & Dorothy  
Chmielewski
- John T. Chumbley &  
Carol Chumbley\*\*  
Irina Ciobanescu Husanu\*\*  
Mr. & Mrs. Peter and Jane  
Cohen  
Ms. Olympia Colasante\*\*  
Joann Colman  
Mr. & Mrs. Alan Craig\*\*  
Tom & Sue Crop  
Charles J. Denny\*\*  
Gail W. Dillon  
Sheryl Durham\*\*  
Dr. Beverly Willis Emanuel\*\*  
Arthur & Eileen Etchells  
Elizabeth Freeman  
Sean and Amy Fahey\*\*  
Anne M. Farrington  
R. Doris Fenyes  
Dr. and Mrs. William G.  
Field\*\*  
Bill & Karen Fisher  
Joel & Carol Fleisher  
The Fox Foundation in  
Memory of Rex & Carol  
Fox\*\*  
Kristin & Gary Friedman  
Dr. & Mrs. Robert J. Geller\*\*  
Ms. Michele M. Gendron\*\*  
Chris & Margie Giles\*  
Robert & Martha Gilliam\*\*  
Raymond Giuffrida  
The William Goldman  
Foundation  
H. Barton Greenspan  
David R. Griscom &  
Berminna Salem  
Mackenzie & Joshua Gross\*\*
- Judith Guise  
Guy Hackney\*\*  
Helen M. Hall\*\*  
Joe & Otti Hallinan  
Christopher Hamilton &  
Marguerite Hulett  
In Memory of Sondra and  
Joel Haness  
Peter Harrsch  
William D. Hart\*\*  
Nils Peter and  
Donna Hasselmo  
Gillian Herschman\*\*  
Nancy Hobbie  
Tom & Joyce Howley  
Jim & Carol Hunsicker  
Mr. & Mrs. Huphoefewicz\*\*  
Charles Intenzo\*  
Ginny & Frank Jackson  
JKRP Architects  
Dr. & Mrs. Gerard Johnson  
In Memory of Jane Lydon  
Kappel\*\*  
Catharine Keim\*\*  
Bonnie Kelly  
Norma Kelly  
Theresa A. Kerlin  
Roger E. King  
Gerhart & Anne Klein  
Charitable Fund  
Mr. & Mrs. W. A. Kline  
Dr. & Mrs. Sylvester  
Kohut, Jr.  
Karen K. Landman  
Andrew & Julia Leader-Smith  
Joe & Andrea Leahy  
Melvin Lee & Stephen Walker
- Lawrence LeGar  
Rafael & Carol Lissack  
Carol & John Little\*\*  
Richard & Kathleen Lowry  
Marie & Bill Magee  
Mr. Jonathan Marmon  
Debbie & Elliott Maser\*\*  
Mr. & Mrs. Steve Mazda  
Philip McAloon and  
Patricia McAloon\*\*  
Kristi McGarvey  
Mrs. Sandra McGee  
Dr. Donald McGuigan,  
D.D.S.\*\*  
Michael and Deborah  
McKee\*\*  
Ms. Elynn McMullin  
Miriam & Stan Meltzer  
Mr. & Mrs. Antonio Micela  
Ms. Kyle Anne Midkiff  
Jim & Mary Ann Miles  
Frances Miller  
Marjorie Miller\*\*  
Rick Moog & Pat Martin  
Mrs. and Mr. Margaret &  
Mark Morgan  
Hermann & Barbara Moser\*\*  
Stephen Mosley &  
Lisa Rnyder  
Emma & Richard Nashner  
Martha & Steve Needles\*\*  
Mark Nimchuck  
Joan Davis Palitz  
Dr. & Mrs. Bernard & Joy  
Pekala  
Diana & Philip Racobaldo\*\*  
Earl & Felicia Rehmann\*\*
- Jerome J. Richardson in  
Memory of William  
"Bill" Rose III  
Mr. Kevin Roach &  
Jane K. Emely Roach\*\*  
Carl & Donna Robinson  
Deborah Rodia\*\*  
Bruce & Susan Rosenbaum  
Sandy Rosenberg  
Sally & Edwin Rosenthal  
Robert & Marilyn Rubin  
Tanya Ruley  
Ms. Michelle Russo  
Mary & Paul Rutter  
Marg Ryan  
Mr. & Mrs. C. A. Sherman  
Dick & Maria Shroy\*\*  
Marsha M. Silberstein, M.D.  
Maryrose Smochek\*\*  
William & Mary Ann  
Stanczak  
Regina & DJ Sukanick  
Wayne Tobolski  
Sarah & John Van Buren  
Walter Vogler  
Mr. & Mrs. Robert and  
Lucinda Weiner  
Russ & Carol Whitman  
Dave and Karen Winning  
Denise Wisneski\*\*  
Faith & Dave Wolford\*\*  
Gina T. Zegel

## BENEFACTORS (\$250+)

- Anonymous (7)\*\*  
M. Faith Angell & Kenneth  
Carobus  
Elizabeth A. Aros\*\*  
Arthur J. Gallagher  
Foundation  
Mr. & Mrs. John Ash\*\*  
Mark Barrett  
Barbara A. Bassett  
Andrew and Melissa  
Baumbach\*\*  
Maureen Beatty  
Robert Beggs  
Ed & Judy Bender\*\*  
Lori Berk  
Kerry Bluestein  
Richard & Carol Boardman  
Lucy Boardway  
George Boehm\*\*  
Wendy B. Boer  
Lois A. Bogdan  
Joseph L. Botero
- Ann Barr  
Lisa Boyell  
Mr. and Mrs. Raymond Bryant  
Thomas F. Brzozowski\*\*  
Ms. Susan Bunch  
Bob & Treva Burger  
Vicky & Jack Cairns  
Bob Canavan\*\*  
Mr. & Mrs. David Carey  
JoAnn & Ralph Carey  
Edward & Dorothy Carter  
Ken Cenci &  
Nora McErlean-Hopson  
Ms. Nancy L. Cervino  
Dr. Barbara Chamberlain  
Clay & Kristie Chandler  
Harvey & Jan Chanin  
Mr. Jack Childs  
Mary Anne & Nick Ciasullo  
Vincent Cipriano  
Ruth & Stanley Cohen  
Jenny Connolly
- John & Marjorie Corbett  
Sally & Tom Coultres\*\*  
Mrs. Sterling Coyne  
Mr. Richard Crean  
Mary M. Creekmore  
Donald Crist  
Sophie & Robert D'Agostino  
Dr. Diaz-Arrostia  
Susan DiPaolo  
Joseph DiSpaldo  
Richard Dobrowski\*\*  
Richard Dougherty  
Jacqueline Drewes  
Richard Egan  
William Evans  
Susan Eves  
Greg & Suzanne Fegley  
Beverly & Stewart Feinberg  
Alexis Gerard Finger\*\*  
Bill Flannery Automotive  
Dodi Fordham and Sam Howe  
Gerald & Jean Frank
- Mr. and Mrs. Kenneth and  
Cecile Frank  
Tong Ming Fu  
Mr. Don Gable  
Kristina Galante  
Anne Marie Gavin  
Ann and Carl Gersbach  
Marianne Giampapa  
Stephen Glaudel  
Carolyn and Nicholas  
Goede\*\*  
Paul Green  
Eleanor Gribok  
Douglas & Epiphany  
Grisbaum  
Robert & Anneliese Gualtieri  
Linda Gussie  
Alvin & Sussie Harris  
Helen Haun  
Connie L. Hewitt  
Kevin Hoelckzema
- Dr. Harris & Mrs. Sandra  
Horwitz  
Alice Houston  
Linda & Bill Hubler  
Loris Hurst  
Mr. Wallace Hussong  
Ken and Nancy Huth  
Dr. & Mrs. Geza Incze in  
Memory of Robert I. Incze  
Mrs. Kathy L. Ireland  
Russ & Mary Jackson  
In Memory of Anne Jones  
Lynn Jordan\*\*  
Jacquelyn Keith  
George Kelley  
Drs John & Barbara Kelly  
Brooke, Natalie, Sarah,  
Susan, Julia, and Stephe-  
nie in Memory of Nancy  
M. Kelly  
Thomas and Stephanie Kelly  
Alyson Kessler

## BENEFACTORS, continued

Marilyn Kirshbaum  
Colleen Klingelhoef  
Joseph & Kathryn Kraher  
Erika Kurtz  
John & Paulette Labar  
Mary Landherr  
Charles & Lucinda Landreth  
The Lange Family  
Joan Lapayowker  
Deborah Leigh\*\*  
Theodora Lengowski &  
Georgine Zamonski  
John & Daniela Leone  
Victoria Levesque  
Mr. Greg Liddle  
David Long  
Mr. & Mrs. James Love  
Bill & Sue Lowry  
Patricia Lukaszow  
Eric & Rebecca Lynch  
Myra Malis  
Richard Marinelli  
Mr. Vincent Massimiano  
Beth & John Master  
Michael & Jean Mathey  
Ms. Rita McBride

Mr & Mrs William J.  
McDonnell  
Mr. & Mrs. Thomas H.  
McGann  
Harriet McGraw  
Joseph & Trina McSorley  
Mark Mendenhall\*\*  
Mr. & Mrs. Mark Methlie  
Elizabeth & Allen Meyer  
Arthur P. & Marjorie L.  
Miller\*\*  
Sheldon & Eva Miller  
John Monteleone  
Patricia M. Moore  
Lawrence & Susan  
Morgan\*\*  
Robin Morrow  
Maureen Moscarelli  
Gerry & Brenda Mullane  
Nancy Nolan  
Suzanne & Jules Olita  
Jeremy & Sandy Oliver  
Pamela O'Neill  
Carol Otte\*\*  
Mr. & Mrs. Thomas and  
Elizabeth Pack

Bob & Susan Peck  
Mr. David B. Penke  
Linda Penza  
Eileen Pieper  
Mr. & Mrs. Steven Pinsky  
Susan Pitcher  
Mr. Frank Pittner  
Marc Platziky  
Nancy and John Pliskin  
Barbara Ponczek  
Joseph Post\*\*  
Mrs. Janet Pottieger\*\*  
Joseph & Jan Quill\*\*  
Mr. & Mrs. Matthew D. Refsin  
Roy A. Rogers  
Mrs. Christine L. Rossett  
Hannah Rossio  
John & Peggy Sabo  
Rita Schiazza  
Carole Schoening\*\*  
Camryn J. Schultheis\*\*  
Jan & Doug Scott\*\*  
Gail Scoufield\*\*  
John & Mary Grace Senatore  
Mrs. Claire Service  
Carol & Douglas Sherwood

Robin Sherwood  
Mr. & Mrs. Mickey Simon  
Donna & Jerry Slipakoff  
Patrick & Donna Smith  
Bonnie & Steven Snyder  
John & Christine Sommer  
Diane Sozio  
John & Bonnie Stangl  
Charles F. Tarr & Roy Ziegler  
Mr. & Mrs. Sylvan Taub  
Lynn Teller  
Edward & Mary Ann Tierney  
Gail R. Tillman  
The Tischler Family  
Susan & Robert Tribit  
Anne & Richard Umbrecht  
Mr. Warren J. Uzialko  
Kathy Valla  
Cathy and Frazier Van Velsor  
Richard Vanberg  
Roger & Eleanor Vanderklok  
Joseph & Sandra Vasta  
Donna Visioli & Cesar Silebi  
Lew & Hella Volgenau  
Margot Waitz &  
Gordon Manin

Dr. Valaida S. Walker  
Jeff Walsh &  
Mark Klingensmith  
John & JoAnn Walsh  
Elizabeth Weinreb  
Mr. and Mrs. Llew Werley  
Mark Wheeler  
Ann White and Jeff Ettinger  
Mr. & Mrs. Howard White  
Thomas Wholey  
Ms. Ann J. Williams  
Kurt & Terry Williams  
Rachel & Brian Wilner  
David & Kathleen Wojcik  
Marian M. Wolfert  
Maureen & Joe Yanoshik  
Dr. Alice Zal  
Sandra Zarodnansky  
The Sisters of Zeta Kappa  
Ms. Maryann Ziembra\*\*  
Gloria Zingaro & Todd and  
Nicholas Welch

## IN KIND

Courier Post  
METRO Philadelphia

The Philadelphia Inquirer  
6ABC

Square One

Donor listings as of Donors listings as of May 1, 2022

Walnut Street Theatre gratefully acknowledges additional supporters of the annual Angels Campaign online at  
[WalnutStreetTheatre.org/support/ways-to-give](http://WalnutStreetTheatre.org/support/ways-to-give).

For more information on ways you can support the arts and educational programs at Walnut Street Theatre,  
please contact the Development Office at (215) 574-3580.

\*Includes a donation made to The Rebecca Capuzzi Memorial Fund, The Ani Fiordimondo Scholarship Fund,  
The Len Karabell Memorial Fund or The Pamela Wood Fund.

\*\*Indicates donor to The Future Lives Here Capital Campaign.

# Celebrate the Legacy!

## Our 2022 Gala — June 16, 2022

Back in a big way, join us in person at The Ballroom at the Ben  
for an enchanting evening of performances, dinner, Silent and Live Auction.

Proceeds will support the Walnut's Education Outreach Programs!

**For more information: 215-574-3580**