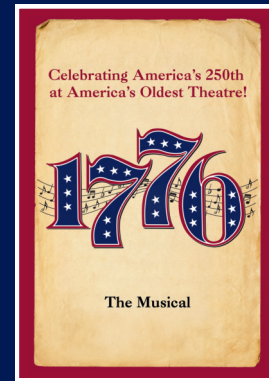
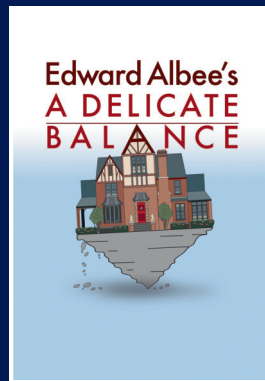
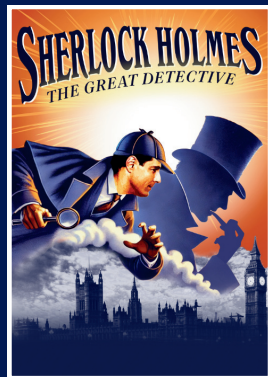


# 2025-26 SUBSCRIBER HANDBOOK



## INCLUDES PARKING AND DINING DISCOUNT INFORMATION

We have prepared this Subscriber Handbook to help you get the most out of your subscription to the Walnut Street Theatre. It contains information on ticket exchanges, ticket sales, and much more. Please read it carefully and keep it in a safe place for future reference. Thank you for subscribing to Walnut Street Theatre. We're excited to have you join us for the 2025-26

A stylized, handwritten signature of Bernard Havard.

Bernard Havard  
Artistic Director



FOUNDED 1808

**WALNUT STREET  
THEATRE**  
PHILADELPHIA

### ONLINE:

24/7 AT [WALNUTSTREETTHEATRE.ORG](http://WALNUTSTREETTHEATRE.ORG)

### EMAIL:

[SUBSCRIPTIONS@WALNUTSTREETTHEATRE.ORG](mailto:SUBSCRIPTIONS@WALNUTSTREETTHEATRE.ORG)

### CALL:

215-574-3550

### IN PERSON:

AT 825 WALNUT STREET (MON-FRI, 10AM - 4PM)

# SUBSCRIBER INFORMATION

## SPECIAL SERVICES

**Open Captioning, Audio Description, and ASL performances:** Visit our website or call 215-574-3550 to learn more about these special performances.

**Accessible seating:** If you require wheelchair seating or you have special seating needs, call 215-574-3550.

## SUBSCRIPTION RENEWAL

Mainstage subscription renewals will begin in January 2026. Subscribers who renew into their same seats are seated first. The best way to improve your chances of a seating upgrade is to renew early and be flexible with your seating location and dates. Renewing subscribers receive priority on seating upgrades. Over 80% of our audience renews their subscription each year. New subscribers are seated after we seat our current subscribers.

## SUBSCRIBERS SAVE MORE!

As a subscriber, you can order up to FOUR additional tickets per household for each of our WST productions, discounted at \$20 off regular price (\$77-\$157), plus reduced service fees!

\*Cannot be combined with any other offer.

**Barrymore's Café** (located on our lower level) and the lobby bars open one hour prior to all performances. Visit Barrymore's Café before the show to grab a specialty espresso drink or cocktail with your friends and enjoy a variety of snacks and baked goods before the show!



Pictured: (left to right)  
Wendy Scharfman and Johnnie Hobbs, Jr.; Nic Rouleau and Ensemble;  
Khalfia White, Gabrielle Beckford, and Aveena Sawyer; Will Stephan Connell



# 2025-26 - A LEGENDARY SEASON

## SUBSCRIBER TICKET EXCHANGE

Subscribers may exchange tickets for another performance of the same production, subject to availability, up to 2 hours prior to the performance time on the held ticket.

## 4 EASY WAYS TO EXCHANGE YOUR TICKETS

**ONLINE:** You can choose your seats online. It's easy! Log into your account to exchange your tickets 24 hours a day, 7 days a week!\*

**PHONE:** Call 215-574-3550, 12pm to showtime.

**IN PERSON:** Visit our box office in person.

**MAIL:** Mail your tickets and request to us.

\* Please note: If you choose a more expensive seat or date, you'll pay the price difference between your subscription seat and the new discount subscription seat you've chosen. Upgrade differences will be charged when you make the exchange. There is no refund when exchanging into a lower-priced performance, series, or seating section.

## MISSED PERFORMANCES

If you are unable to attend your scheduled performance for any reason, please be sure to exchange your tickets at least **2 HOURS IN ADVANCE**. Your tickets are void and cannot be exchanged once your performance has occurred. There are no refunds for missed performances.

## LOST TICKET REPLACEMENT

If you lose or misplace your tickets we will be happy to provide replacements. Replacement tickets will be held at the box office.



## SUBSCRIBER SERVICES

If you have questions about your subscription, or if you would like to purchase or renew subscriptions to our Mainstage or Walnut Street Theatre for Kids Series, please call us at 215-574-3550, 12pm to showtime.

## DONATING YOUR TICKETS

If you will be unable to use or exchange your tickets, you may return them to the theatre (up to 2 hours before your scheduled performance) as a tax-deductible donation. We will issue an email acknowledgment of your contribution equal to the value of your subscription ticket price.

## LATE SEATING

The lobby opens 60 minutes prior to each Mainstage performance, and seating begins 30 minutes before curtain time. Latecomers will be seated at the discretion of management in order to prevent a disruption of the performance already in progress. In most cases, if you are late you will be asked to sit in the first available seat until intermission. After intermission, latecomers can claim their ticketed seats.

## MANAGE YOUR SUBSCRIPTION ONLINE!

You can update your profile, exchange your tickets or transfer your tickets to a friend. You will be able to pay your renewal invoice online in January, 2026. For step-by-step instructions, visit: [WalnutStreetTheatre.org/MyTickets](http://WalnutStreetTheatre.org/MyTickets).

# 2025-26 SEASON MAINSTAGE SCHEDULE

		MILLION	STORY	HOLMES	DELICATE	1776
Week <b>A</b>	Tues Evening Preview (7:30pm)	Sept 30	Nov 18	Jan 13	Feb 24	April 14
	Wed Evening Preview (7:30pm)	Oct 1	Nov 19	Jan 14	Feb 25	April 15
	Thurs Evening Preview (7:30pm)	Oct 2	Nov 20	Jan 15	Feb 26	April 16
	Fri Evening Preview (8pm)	Oct 3	Nov 21	Jan 16	Feb 27	April 17
	Sat Matinee Preview (2pm)	Oct 4	Nov 22	Jan 17	Feb 28	April 18
	Sat Evening Preview (8pm)	Oct 4	Nov 22	Jan 17	Feb 28	April 18
	Sun Matinee Preview (2pm)	Oct 5	Nov 23	Jan 18	March 1	April 19
	Sun Evening Preview (7pm)	Oct 5	Nov 23	Jan 18	March 1	April 19
Week <b>B</b>	Tues Evening Preview (7:30pm)	Oct 7	Nov 25	Jan 20	March 3	April 21
	Wed Evening (7pm) OPENING	Oct 8	Nov 26	Jan 21	March 4	April 22
	Thurs Evening (7:30pm)	Oct 9	Dec 22*	Jan 22	March 5	April 23
	Fri Evening (8pm)	Oct 10	Nov 28	Jan 23	March 6	April 24
	Sat Matinee (2pm)	Oct 11	Nov 29	Jan 24	March 7	April 25
	Sat Evening (8pm)	Oct 11	Nov 29	Jan 24	March 7	April 25
	Sun Matinee (2pm)	Oct 12	Nov 30	Jan 25	March 8	April 26
	Sun Evening (7pm)	Oct 12	Nov 30	Jan 25	March 8	April 26
Week <b>C</b>	Tues Evening (7:30pm)	Oct 14	Dec 2	Jan 27	March 10	May 19**
	Wed Matinee (2pm)	Oct 15	Dec 3	Jan 28	March 11	May 20**
	Wed Evening (7:30pm)	Oct 15	Dec 3	Jan 28	March 11	May 20**
	Thurs Matinee (2pm)	Oct 16	Dec 4	Jan 29	March 12	May 21**
	Thurs Evening (7:30pm)	Oct 16	Dec 4	Jan 29	March 12	April 30
	Fri Evening (8pm)	Oct 17	Dec 5	Jan 30	March 13	May 1
	Sat Matinee (2pm)	Oct 18	Dec 6	Jan 31	March 14	May 2
	Sat Evening (8pm)	Oct 18	Dec 6	Jan 31	March 14	May 2
	Sun Matinee (2pm)	Oct 19	Dec 7	Feb 1	March 15	May 3
Week <b>D</b>	Wed Matinee (2pm)	Oct 22	Dec 10	Feb 4	March 18	May 27**
	Wed Evening (7:30pm)	Oct 22	Dec 10	Feb 4	March 18	May 27**
	Thurs Matinee (2pm)	Oct 23	Dec 11	Feb 5	March 19	May 7
	Thurs Evening (7:30pm)	Oct 23	Dec 11	Feb 5	March 19	May 7
	Fri Matinee (2:00pm)	Oct 31**	Dec 12	Feb 6	March 20	May 8
	Sat Matinee (2pm)	Oct 25	Dec 13	Feb 7	March 21	May 9
	Sat Evening (8pm)	Oct 25	Dec 13	Feb 7	March 21	May 9
	Sun Matinee (2pm)	Oct 26	Dec 14	Feb 8	March 22	May 10
Week <b>E</b>	Tues Evening (7:30pm)	Oct 28	Dec 16	Feb 10	March 24	May 12
	Wed Matinee (2pm)	Oct 29	Dec 17	Feb 11	March 25	May 13
	Thurs Matinee (2pm)	Oct 30	Dec 18	Feb 12	March 26	May 14
	Thurs Evening (7:30pm)	Oct 30	Dec 18	Feb 12	March 26	May 14
	Fri Evening (8pm)	Oct 24^	Dec 19	Feb 13	March 27	May 15
	Sat Matinee (2pm)	Nov 1	Dec 20	Feb 14	March 28	May 16
	Sat Evening (8pm)	Nov 1	Dec 20	Feb 14	March 28	May 16
	Sun Matinee (2pm)	Nov 2	Dec 21	Feb 15	March 29	May 17

FOR A COMPLETE CALENDAR WITH EXTENSION PERFORMANCES VISIT US ONLINE AT [WALNUTSTREETTHEATRE.ORG](http://WALNUTSTREETTHEATRE.ORG).

\* The Week B Thursday Evening performance of A CHRISTMAS STORY has been moved to December 22 due to the Thanksgiving holiday.

\*\* The Week C and D performances of 1776 have been moved due to 10:30am student matinees.

\*\* The Week D Friday Matinee performance of MILLION DOLLAR QUARTET has been moved to October 31 due to the Halloween holiday.

^ The Week E Friday Evening performance of MILLION DOLLAR QUARTET has been moved to October 24 due to the Halloween holiday.



# DINING PARTNER INFORMATION

## DINING PARTNER OFFERS

Our dining partners offer a wide variety of restaurant options to complete your trip to the theatre. We encourage you to support our neighbors and take advantage of their generous offers!

### **Buca D'oro Ristorante** | Official Restaurant Partner of Walnut Street Theatre

711 Locust St, Philadelphia, PA 19106

(215) 928-0556

15% off food for theatre patrons (cannot be combined with other offers, promotions, or special menu options). Alcoholic beverages are not eligible for this discount.

### **Barra Rossa**

929 Walnut Street, Philadelphia, PA 19107

(215) 644-9074

10% off food on date of performance only

### **Hard Rock Café**

1131 Market Street, Philadelphia, PA 19107

\$10 off \$50 (food and nonalcoholic beverages)

### **Hi-Lo Taco**

1109 Walnut St, Philadelphia, PA 19107

10% off on date of performance only

### **Iron Hill Brewery**

1150 Market Street, Philadelphia, PA 19107

(267) 507-7365

10% off on nonalcoholic purchases on show dates

### **Koto Sushi**

719 Sansom Street, 1 Floor, Philadelphia, PA 19106

(267) 239-2250

10% off food bill or at-home hibachi catering upon showing ticket (cannot be combined with other promotions, special menu options, or open table reservations)

### **La Scala's Fire**

615 Chestnut Street, Philadelphia, PA 19106

(215) 928-0900

10% off, anytime

### **Le Pain Quotidien**

801 Walnut Street, Philadelphia, PA 19107

(267) 528-0481

10% for Season Ticket Holders

### **Maggiano's Little Italy**

1201 Filbert Street, Philadelphia, PA 19107

(267) 581-8365

15% off, anytime

### **Miss Saigon**

1316 Walnut Street, Philadelphia, PA 19107

(267) 534-3963

\$45 special theatre menu and discounts on select wine on date of performance only

### **Moriarty's**

1116 Walnut Street, Philadelphia, PA 19107

(215) 627-7676

20% off for subscribers, must show subscriber account; 15% off dinner menu for non-subscribers Sunday through Thursday, must show ticket

### **NYPD Pizza**

140 S. 11th Street, Philadelphia, PA 19107

(215) 733-0651

10% discount upon showing subscriber ticket

### **Paprica Grill**

811 Sansom Street, Philadelphia, PA 19107

20% discount

### **Positano Coast by Aldo Lamberti**

212 Walnut Street, 2nd Floor, Philadelphia PA 19106

(215) 238-0499

10% off the food portion of the bill with proof of ticket purchase

### **Top Tomato Bar & Pizza**

116 S 11th Street, Philadelphia, PA 19107

(215) 592-8242

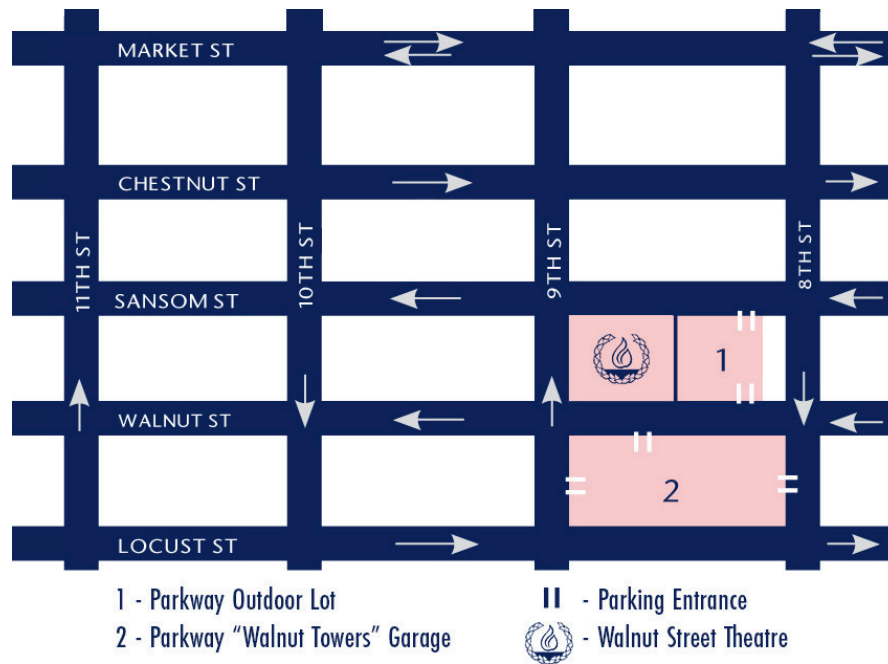
10% off dine-in on day of show, must show ticket. Offer is not valid at to-go counter.

For a full list  
of dining  
partners in  
the area, visit:



[WalnutStreetTheatre.org/visit/dining-hotels.php](http://WalnutStreetTheatre.org/visit/dining-hotels.php)

# PARKING



## The Theatre's address is:

Walnut Street Theatre  
825 Walnut Street (corner of 9th & Walnut)  
Philadelphia, PA 19107

## Map location #1 · Parkway Outdoor Lot on Walnut Street (Next to Theatre)

- When entering the Parkway Outdoor Lot location, identify yourself as a Walnut Subscriber, with your Subscriber Card or your season tickets. You then will receive a parking ticket and a discount sticker from the attendant.
- You may go directly to the kiosk with your parking ticket and sticker before your performance to pay. You may also do this after the performance, but please be advised that there may be a line at that point.

## Map location #2 · Parkway Walnut Towers Indoor Parking Garage on Walnut Street

- When entering the Parkway Walnut Towers location, you will receive a parking ticket at the entry gate. Please bring this ticket to the theatre with you.
- Upon entering the theatre and before the performance begins, present the parking ticket and your performance ticket to the subscriptions staff member next to the gift case to receive a discount sticker. Note: Please come early to ensure you have enough time to receive your discount sticker.
- Apply the discount sticker to the back of your parking ticket per the directions on the ticket.
- After the performance, when exiting the garage at the gate, scan the front of your parking ticket first, then scan the back where the discount sticker has been placed when making your payment to apply the discount! Note: Donors receive unique discount stickers. Donors will receive separate instructions about their benefits.



**PARKWAY**  
*Parking at A Higher Level®*

We are proud to have Parkway as our Official Parking Partner.